

WAAS CH 93805 W36B	APP CRS 356°	Rwy Idg 13400 TDZE 588 Apt Elev 607
--	------------------------	--

RNAV (GPS) RWY 36L

DALLAS-FORT WORTH INTL (DFW)

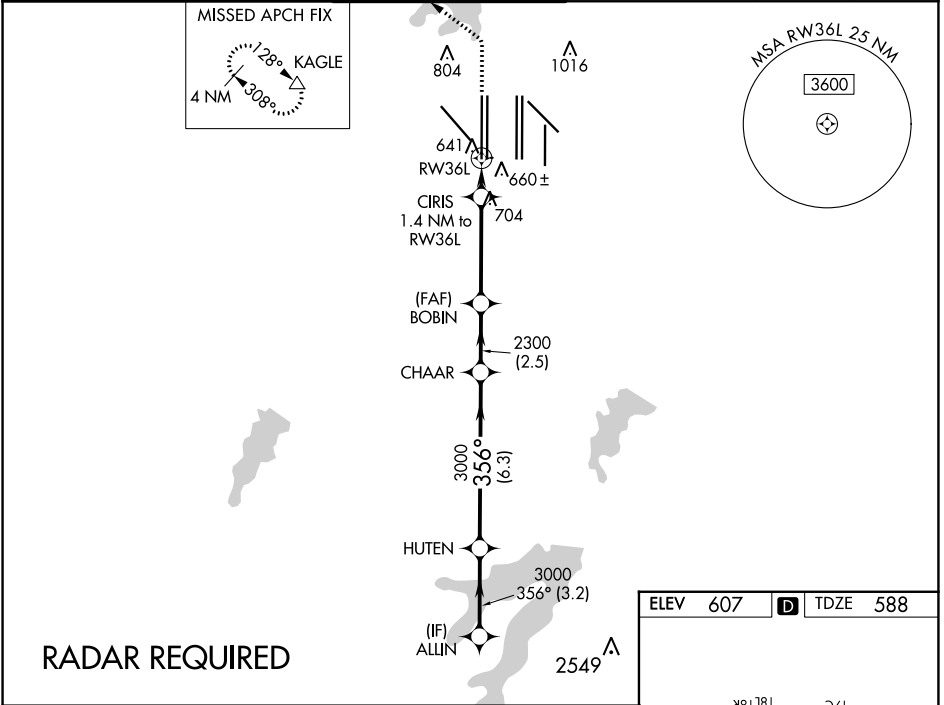
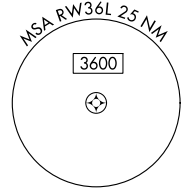
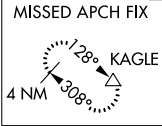
▼ For uncompensated Baro-VNAV systems, LNAV/VNAV NA below -4°C (25°F) or above 54°C (130°F). For inop MALSR, increase LNAV Cat C/D visibility to RVR 5500. Simultaneous approach authorized with Rwy 35L/C/R. DME/DME RNP-0.3 NA. LNAV procedure NA during simultaneous operations. Use of FD or AP providing RNAV track guidance required during simultaneous operations.

MALSR



MISSED APPROACH: Climb to 1100 then climbing left turn to 3000 direct KAGLE and hold.

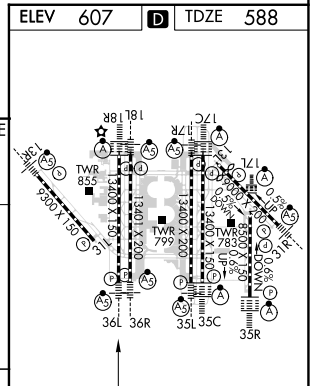
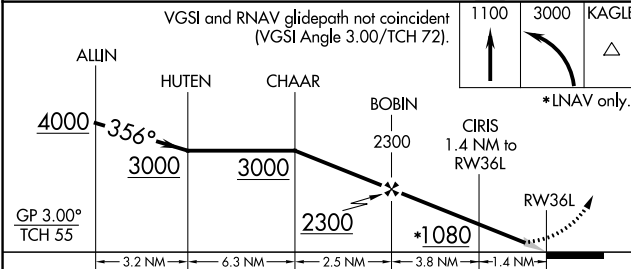
D-ATIS ARR 123.775 DEP 135.925	REGIONAL APP CON 118.425	DFW TOWER 126.55 127.5 EAST 124.15 134.9 WEST	GND CON 121.65 121.8 EAST 121.85 WEST	CLNC DEL 128.25	CPDLC
--	------------------------------------	---	---	---------------------------	-------



SC-2, 08 AUG 2024 to 05 SEP 2024

SC-2, 08 AUG 2024 to 05 SEP 2024

ELEV 607	D	TDZE 588
----------	---	----------



CATEGORY	A	B	C	D
LPV DA		788/18	200 (200-½)	
LNAV/VNAV DA		987/45	399 (400-¾)	
LNAV MDA	960/24	372 (400-½)	960/35	372 (400-¾)

HIRL all Rwwys
REIL Rwwys 13L and 31L
TDZ/CL all Rwwys except 13L and 31L