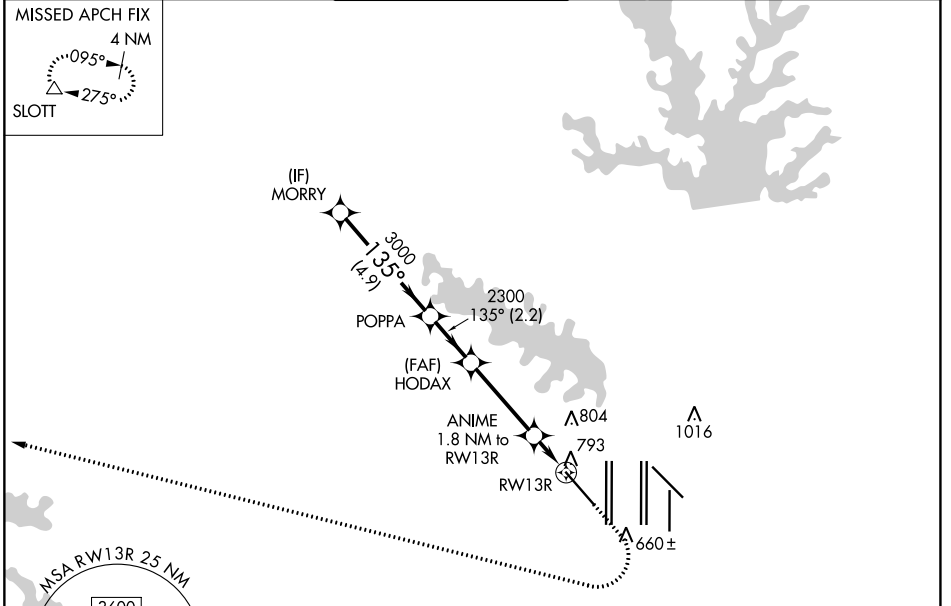


WAAS CH 72742 W13A	APP CRS 135°	Rwy Idg 9300 TDZE 591 Apt Elev 606
--	------------------------	---

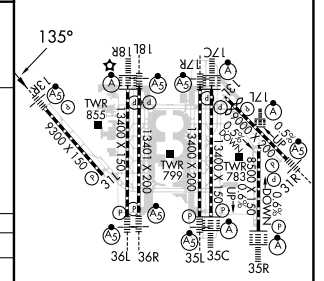
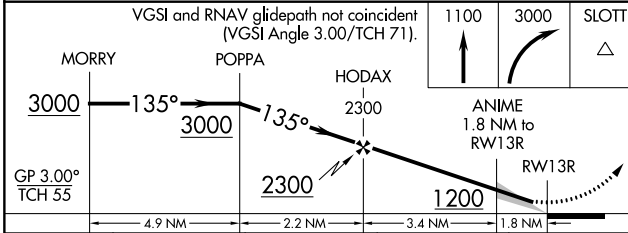
RNAV (GPS) Y RWY 13R

DALLAS-FORT WORTH INTL (DFW)

RNP APCH - GPS. ▼ For uncompensated Baro-VNAV systems, LNAV/VNAV NA below -8° C or above 54° C. For inop ALS, increase LNAV/VNAV all Cats visibility to RVR 6000 and LNAV Cat C/D visibility to 1/2 SM.		MALSR AS	MISSED APPROACH: Climb to 1100 then climbing right turn to 3000 direct SLOTT and hold.		
D-ATIS ARR 123.775 DEP 135.925	REGIONAL APP CON 133.15 118.1	DFW TOWER 126.55 127.5 EAST 124.15 134.9 WEST	GND CON 121.65 121.8 EAST 121.85 WEST	CLNC DEL 128.25	CPDLC



ELEV 606	D	TDZE 591
----------	---	----------



CATEGORY	A	B	C	D
LPV DA		791/18	200 (200-1/2)	
LNAV/VNAV DA		991/35	400 (400-3/8)	
LNAV MDA	1080/24	489 (500-1/2)	1080/50	489 (500-1)

HIRL all Rwys
REIL Rws 13L and 31L
TDZ/CL all Rws except 13L and 31L

SC-2, 08 AUG 2024 to 05 SEP 2024

SC-2, 08 AUG 2024 to 05 SEP 2024