

WILBR NINE ARRIVAL
(WILBR: WILBR9) 11 JUL24

Transition Routes

DALLAS-FORT WORTH, TEXAS
(DFW)
DALLAS-FORT WORTH INTL (DFW)

REGIONAL APP CON
125.025 263.025
D-ATIS ARR
123.775



ARDMORE
116.7 ADM
Chan 114

NOTE: RADAR required.
NOTE: DME required.

BONHAM
114.6 BYP
Chan 93

Parachute Jumping Area for
Trenton, Tri-County Air Estates

See following page for
arrival route.

TULSA
114.4 TUL
Chan 91

FORT SMITH
110.4 FSM
Chan 41

LITTLE ROCK
113.9 LIT
Chan 86

RICH MOUNTAIN
113.5 PGO
Chan 82

TEXARKANA
116.3 TXK
Chan 110

EL DORADO
115.5 ELD
Chan 102

PARIS
113.6 PRX
Chan 83

GREGG COUNTY
112.9 GGG
Chan 76

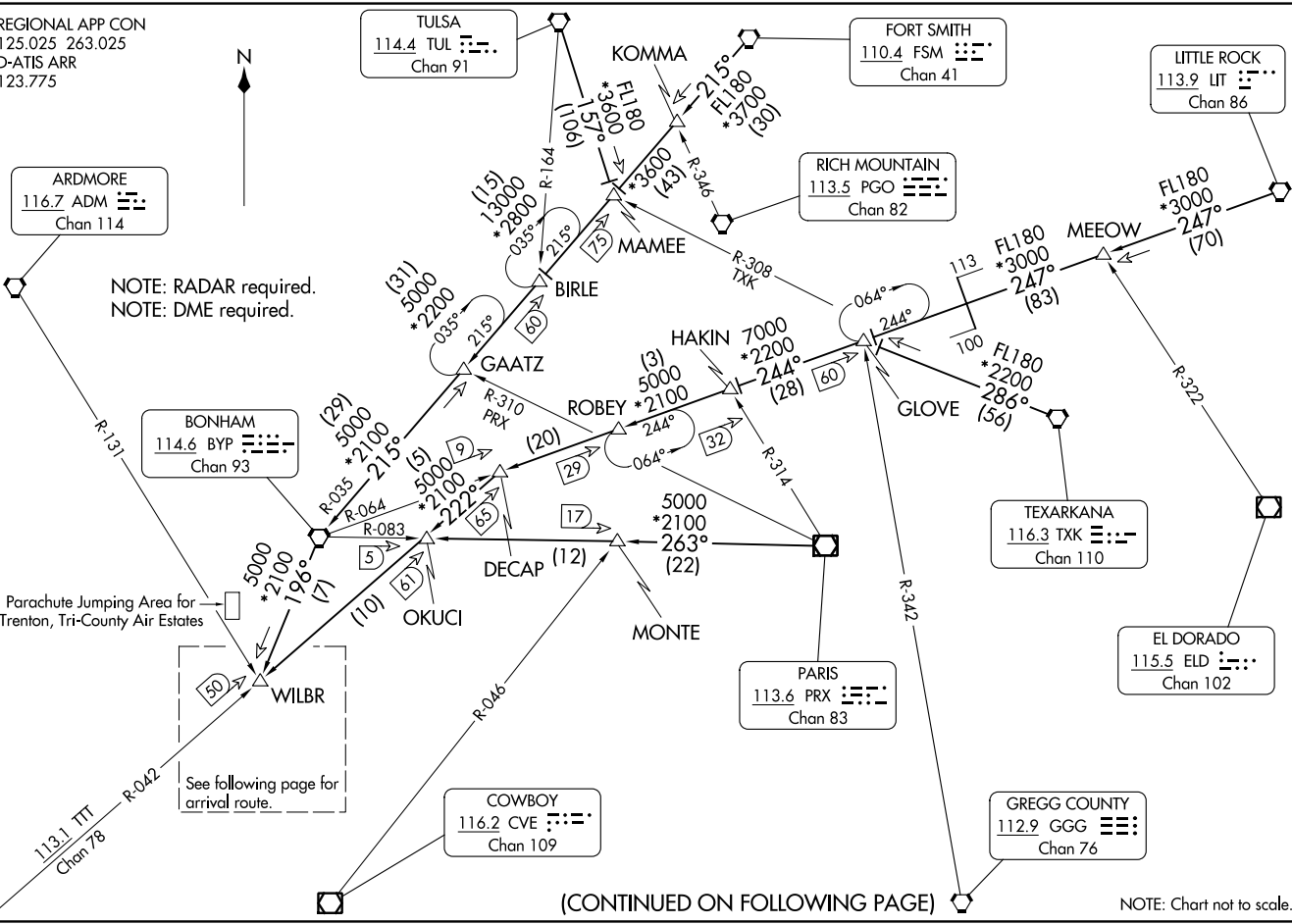
COWBOY
116.2 CVE
Chan 109

(WILBR: WILBR9) 24193

Transition Routes

DALLAS-FORT WORTH INTL (DFW)
DALLAS-FORT WORTH, TEXAS

AL-6039 (FAA)



(CONTINUED ON FOLLOWING PAGE)

NOTE: Chart not to scale.

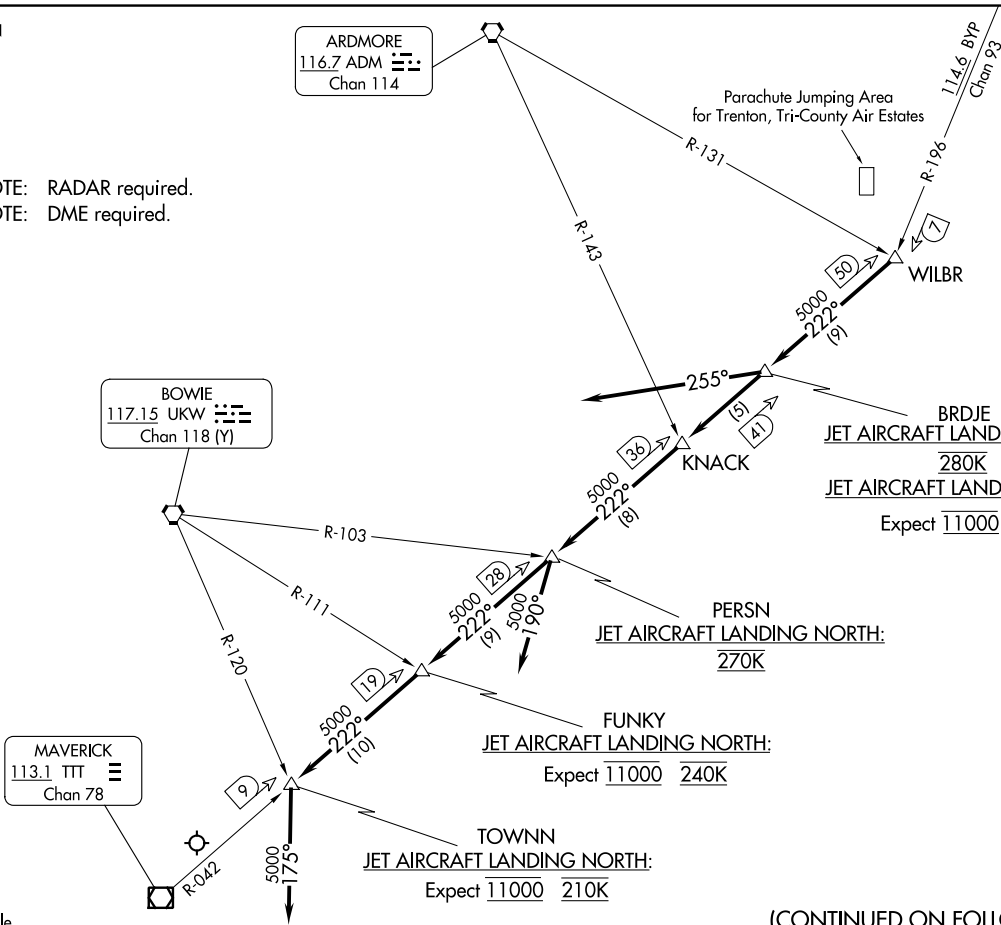
WILBR NINE ARRIVAL
(WILBR, WILBR9) 11 JUL 24

Arrival Routes

DALLAS-FORT WORTH, TEXAS
DALLAS-FORT WORTH INTL (DFW)

REGIONAL APP CON
125.025 263.025
D-ATIS ARR
123.775

NOTE: RADAR required.
NOTE: DME required.



Note: Chart not to scale

(CONTINUED ON FOLLOWING PAGE)

(WILBR, WILBR9) 24193
WILBR NINE ARRIVAL

Arrival Routes

DALLAS-FORT WORTH INTL (DFW)
DALLAS-FORT WORTH, TEXAS

AL-6039 (FAA)

WILBR NINE ARRIVAL

ARRIVAL ROUTE DESCRIPTION

BONHAM TRANSITION (BYP.WILBR9): From over BYP VORTAC on BYP R-196 to WILBR. Thence

FORT SMITH TRANSITION (FSM.WILBR9): From over FSM VORTAC on FSM R-215 to MAMEE, then on BYP R-035 to BYP VORTAC, then on BYP R-196 to WILBR. Thence

LITTLE ROCK TRANSITION (LIT.WILBR9): From over LIT VORTAC on LIT R-247 to MEEOW, then on LIT R-247 and BYP R-064 to GLOVE, then on BYP R-064 to DECAP, then on TTT R-042 to WILBR. Thence

PARIS TRANSITION (PRX.WILBR9): From over PRX VOR/DME on PRX R-263 and BYP R-083 to MONTE, then on BYP R-083 to OKUCI, then on TTT R-042 to WILBR. Thence

TEXARKANA TRANSITION (TXK.WILBR9): From over TXK VORTAC on TXK R-286 to GLOVE, then on BYP R-064 to DECAP, then on TTT R-042 to WILBR. Thence

TULSA TRANSITION (TUL.WILBR9): From over TUL VORTAC on TUL R-157 to MAMEE, then on BYP R-035 to BYP VORTAC, then on BYP R-196 to WILBR. Thence

. . . . from over WILBR on TTT R-042

ALL AIRCRAFT LANDING SOUTH: To BRDJE depart heading 255°, expect RADAR vectors for base leg.

JETS LANDING NORTH: To BRDJE, to KNACK, to PERSN, to FUNKY, to TOWNNN, then depart heading 175°, expect RADAR vectors.

PROP AIRCRAFT LANDING NORTH: To BRDJE, to KNACK, to PERSN, then depart heading 190°, expect RADAR vectors.

SC-2, 08 AUG 2024 to 05 SEP 2024

SC-2, 08 AUG 2024 to 05 SEP 2024