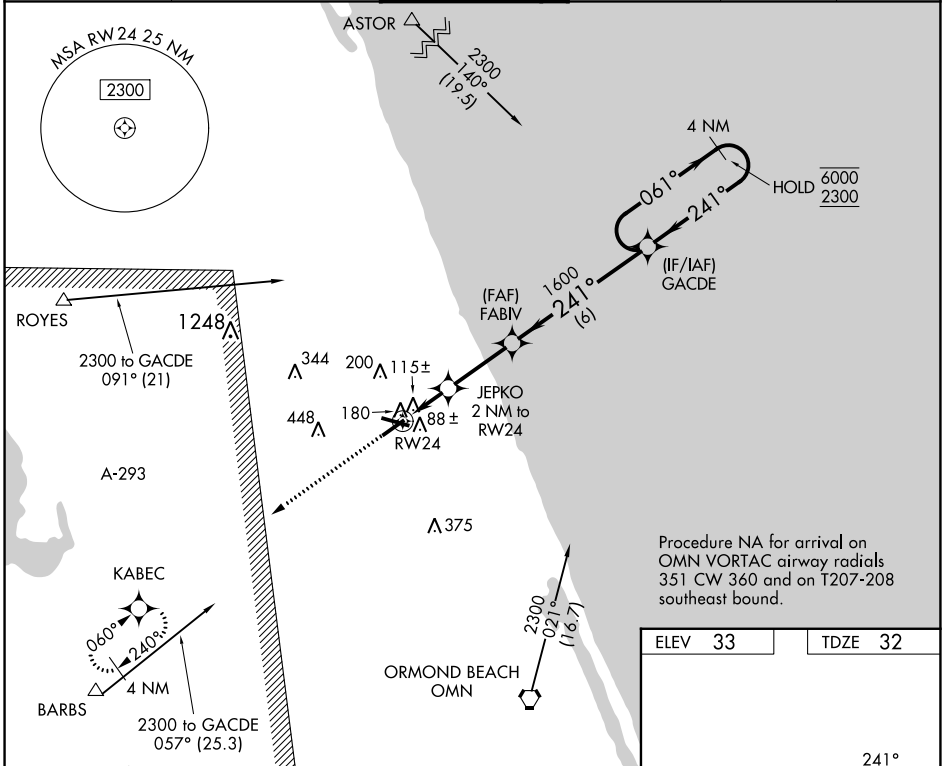


WAAS CH <b>86742</b> <b>W24A</b>	APP CRS <b>241°</b>	Rwy Idg TDZE Apt Elev	<b>5001</b> <b>32</b> <b>33</b>
--	------------------------	-----------------------------	---------------------------------------

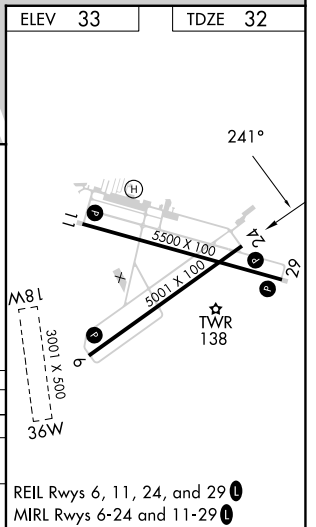
# RNAV (GPS) RWY 24

FLAGLER EXEC (FIN)

RNP APCH.		MISSED APPROACH: Climb to 2300 direct KABEC and hold.					
<p>⚠ Circling Rwy 11, 29 NA at night. Rwy 24 helicopter visibility reduction below 3/4 SM NA. Circling NA to Rwys 18W and 36W.</p>		<p>ATIS <b>128.325</b></p>	<p>DAYTONA APP CON <b>125.8 269.075</b></p>	<p>FLAGLER TOWER ★ <b>118.95</b> (CTAF) <b>0</b></p>	<p>GND CON <b>121.75</b></p>	<p>CLNC DEL <b>121.75</b></p>	<p>UNICOM <b>123.0</b></p>



2300	KABEC	GACDE 4 NM Holding Pattern			
↑	✧	JEPKO 2 NM to RW24	FABIV	061° → 6000	← 241° 2300
		1 NM to RW24	3.00° TCH 40	241°	241°
		RW24	700	1600	
		1 NM	1 NM	2.8 NM	6 NM
CATEGORY		A	B	C	D
LP MDA		380-1		348 (400-1)	
RNAV MDA		440-1 408 (500-1)		440-1 1/8 408 (500-1 1/8)	
Ⓢ CIRCLING		500-1 467 (500-1)		760-2 727 (800-2)	760-2 1/4 727 (800-2 1/4)



SE-3, 08 AUG 2024 to 05 SEP 2024

SE-3, 08 AUG 2024 to 05 SEP 2024

REIL Rwys 6, 11, 24, and 29 **0**  
MIRL Rwys 6-24 and 11-29 **0**