

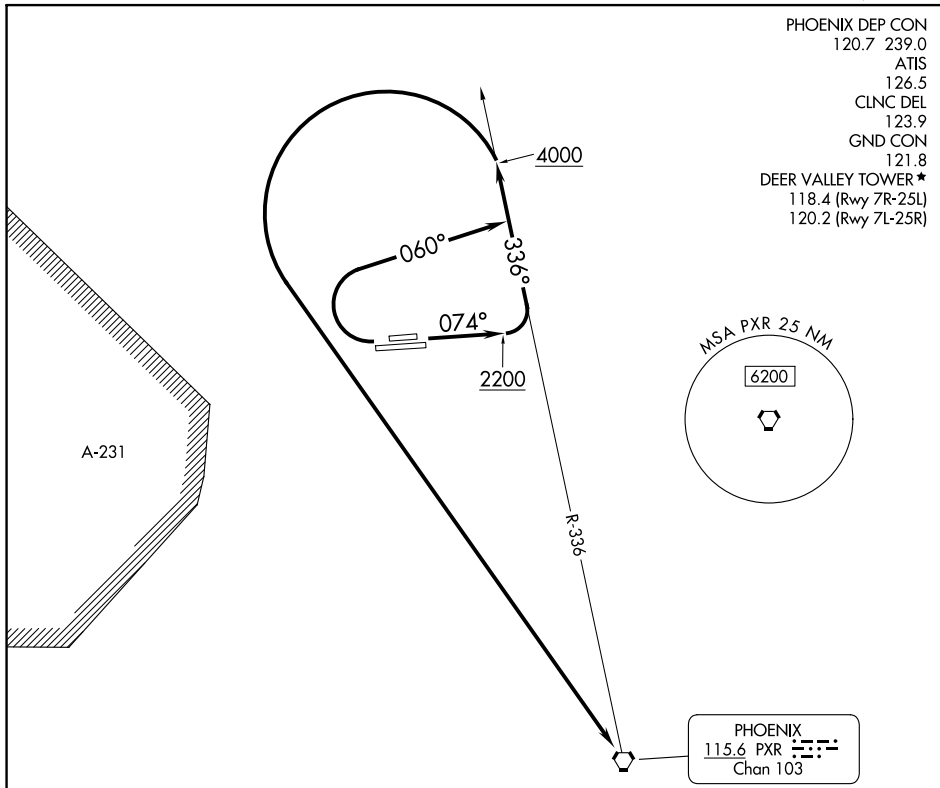
(DVT3.PXR) 23334

AL-6646 (FAA)

PHOENIX DEER VALLEY (DVT)
PHOENIX, ARIZONA

DEER VALLEY THREE DEPARTURE (OBSTACLE)

PHOENIX DEP CON
120.7 239.0
ATIS
126.5
CLNC DEL
123.9
GND CON
121.8
DEER VALLEY TOWER *
118.4 (Rwy 7R-25L)
120.2 (Rwy 7L-25R)



SW-4, 08 AUG 2024 to 05 SEP 2024

SW-4, 08 AUG 2024 to 05 SEP 2024

TAKEOFF MINIMUMS

- Rwy 7L: Standard with minimum climb of 400' per NM to 2200.
- Rwy 7R: Standard with minimum climb of 675' per NM to 1800.
- Rwy 25L: Standard with minimum climb of 265' per NM to 2600.
- Rwy 25R: Standard with minimum climb of 285' per NM to 2600.

(CONTINUED ON FOLLOWING PAGE)

NOTE: Chart not to scale.

DEPARTURE ROUTE DESCRIPTION

TAKEOFF RUNWAYS 7L/R: Climb on heading 074° to 2200, then climbing left turn on PXR VORTAC R-336 northwest bound to 4000, thence. . . .

TAKEOFF RUNWAYS 25L/R: Climbing right turn on heading 060° and PXR VORTAC R-336 northwest bound to 4000, thence. . . .

. . . . left turn direct PXR VORTAC.

DEER VALLEY THREE DEPARTURE (OBSTACLE)

(DVT3.PXR) 10AUG23

PHOENIX, ARIZONA
PHOENIX DEER VALLEY (DVT)

DEER VALLEY THREE DEPARTURE (OBSTACLE)

TAKEOFF OBSTACLE NOTES

- Rwy 7L: General utility, vertical point beginning 30' from DER, 120' right of centerline, up to 3' AGL/1479' MSL.
 - Vertical point 33' from DER, 125' left of centerline, 2' AGL/1479' MSL.
 - Sign 89' from DER, 160' left of centerline, 3' AGL/1480' MSL.
 - Pole, Navaid beginning 340' from DER, 315' right of centerline, up to 13' AGL/1488' MSL.
 - Tree 665' from DER, 537' left of centerline, 1498' MSL.
 - Trees beginning 746' from DER, 499' left of centerline, up to 1499' MSL.
 - Tree 913' from DER, 338' left of centerline, 1502' MSL.
 - Tree 3574' from DER, 381' left of centerline, 13' AGL/1569' MSL.
 - Terrain 3610' from DER, 165' left of centerline, 1579' MSL.
 - Terrain, tree beginning 3611' from DER, 253' left of centerline, up to 1587' MSL.
 - Vegetation 3686' from DER, 38' right of centerline, 3' AGL/1570' MSL.
 - Trees beginning 3693' from DER, 380' left of centerline, up to 10' AGL/1602' MSL.
 - Terrain, tree, vegetation beginning 3713' from DER, 9' left of centerline, up to 1624' MSL.
 - Trees beginning 3824' from DER, 0' right of centerline, up to 1596' MSL.
- Rwy 7R: Lighting 42' from DER, 484' left of centerline, 1' AGL/1482' MSL.
 - Vegetation 146' from DER, 515' left of centerline, 1483' MSL.
 - Tree 393' from DER, 602' left of centerline, 1488' MSL.
 - Tree, pole beginning 513' from DER, 499' right of centerline, up to 1498' MSL.
 - Tree 557' from DER, 266' left of centerline, 1494' MSL.
 - Pole 848' from DER, 503' right of centerline, 24' AGL/1507' MSL.
 - Building 930' from DER, 712' right of centerline, 1510' MSL.
 - Terrain 990' from DER, 359' right of centerline, 1514' MSL.
 - Vertical structure 1027' from DER, 602' left of centerline, 1518' MSL.
 - Pole 1028' from DER, 601' left of centerline, 39' AGL/1526' MSL.
 - Pole, vegetation, tree beginning 1031' from DER, 384' right of centerline, up to 28' AGL/1536' MSL.
 - Pole 1137' from DER, 548' left of centerline, 43' AGL/1530' MSL.
 - Pole, tree beginning 1149' from DER, 707' left of centerline, up to 48' AGL/1536' MSL.
 - Trees beginning 1845' from DER, 878' right of centerline, up to 1558' MSL.
 - Trees beginning 1935' from DER, 762' left of centerline, up to 14' AGL/1542' MSL.
 - Trees beginning 1950' from DER, 924' right of centerline, up to 1578' MSL.
 - Tree, vegetation beginning 1953' from DER, 660' left of centerline, up to 12' AGL/1554' MSL.
 - Terrain 2041' from DER, 865' left of centerline, 1579' MSL.
 - Terrain, vegetation, tree beginning 2043' from DER, 422' left of centerline, up to 1587' MSL.
 - Terrain, tree, vegetation beginning 2145' from DER, 504' left of centerline, up to 1624' MSL.
- Rwy 25L: Tree, fence beginning 19' from DER, 498' right of centerline, up to 1455' MSL.
 - Tree 37' from DER, 505' left of centerline, 1461' MSL.
 - Tree, building beginning 195' from DER, 505' left of centerline, up to 31' AGL/1465' MSL.
 - Tree, building beginning 304' from DER, 506' right of centerline, up to 1469' MSL.
 - Tree 421' from DER, 498' right of centerline, 1470' MSL.
 - Tree, building, antenna, pole beginning 542' from DER, 502' right of centerline, up to 39' AGL/1475' MSL.
 - Tree, building, pole beginning 630' from DER, 505' left of centerline, up to 1467' MSL.
 - Pole 1070' from DER, 375' left of centerline, 1468' MSL.
 - Poles beginning 1077' from DER, 374' left of centerline, up to 39' AGL/1470' MSL.
 - Pole 1126' from DER, 498' right of centerline, 44' AGL/1478' MSL.
 - Poles beginning 1183' from DER, 495' left of centerline, up to 41' AGL/1471' MSL.
 - Signs beginning 1234' from DER, 356' left of centerline, up to 48' AGL/1478' MSL.
- Rwy 25R: Lighting 30' from DER, 114' left of centerline, 3' AGL/1456' MSL.
 - Lighting, general utility beginning 30' from DER, 112' right of centerline, up to 2' AGL/1456' MSL.
 - General utility 31' from DER, 112' left of centerline, 4' AGL/1457' MSL.
 - Tree 1139' from DER, 798' right of centerline, 1490' MSL.

SW-4, 08 AUG 2024 to 05 SEP 2024

SW-4, 08 AUG 2024 to 05 SEP 2024