

APP CRS	Rwy Idg	N/A
254°	TDZE	N/A
	Apt Elev	1478

# RNAV (GPS)-B

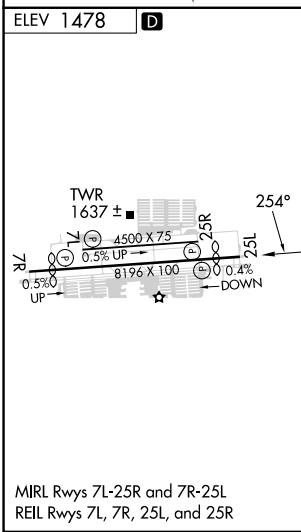
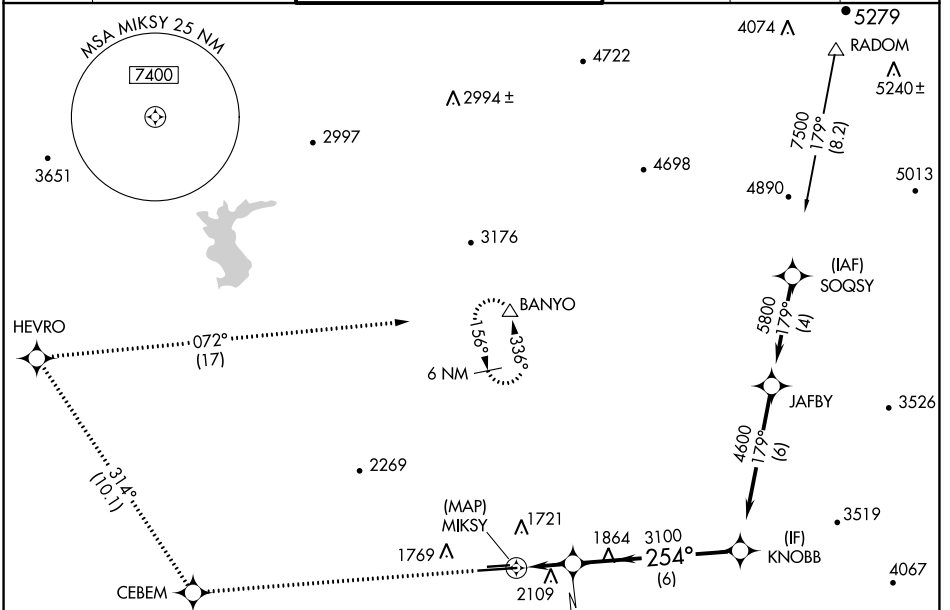
## PHOENIX DEER VALLEY (DVT)

RNP APCH - GPS.

**⚠** When VGSI inop, Circling to Rwy 25R NA at night. Circling not authorized at night north of Rwy 7R-25L. When local altimeter setting not received, use Scottsdale altimeter setting and increase all MDAs 40 feet and Circling Cat B visibility 1/2 SM.

**MISSED APPROACH:** Climb to 6000 direct CEBEM and on track 314° to HEVRO and right turn on track 072° to BANYO and hold.

ATIS <b>126.5</b>	PHOENIX APP CON <b>120.7 239.0</b>	DEER VALLEY TOWER ★ <b>118.4 (070°-250°) (CTAF)</b> <b>120.2 (251°-069°)</b>	GND CON <b>121.8</b>	CLNC DEL <b>123.9</b>	UNICOM <b>122.95</b>
----------------------	---------------------------------------	--	-------------------------	--------------------------	-------------------------



ELEV 1478	<b>D</b>	6000	CEBEM	tr 314°	HEVRO	tr 072°	BANYO	4600	KNOBB
JERGI							Procedure Turn NA		
2 NM			6 NM						
CATEGORY	A	B	C	D					
CIRCLING	2400-1¼ 922 (1000-1¼)	2420-1¼ 942 (1000-1¼)	2580-3 1102 (1200-3)	NA					

SW-4, 08 AUG 2024 to 05 SEP 2024

SW-4, 08 AUG 2024 to 05 SEP 2024