

VORTAC FGT 115.7 Chan 104	APP CRS 085°	Rwy Idg 4099 TDZE 961 Apt Elev 961
---	------------------------	---

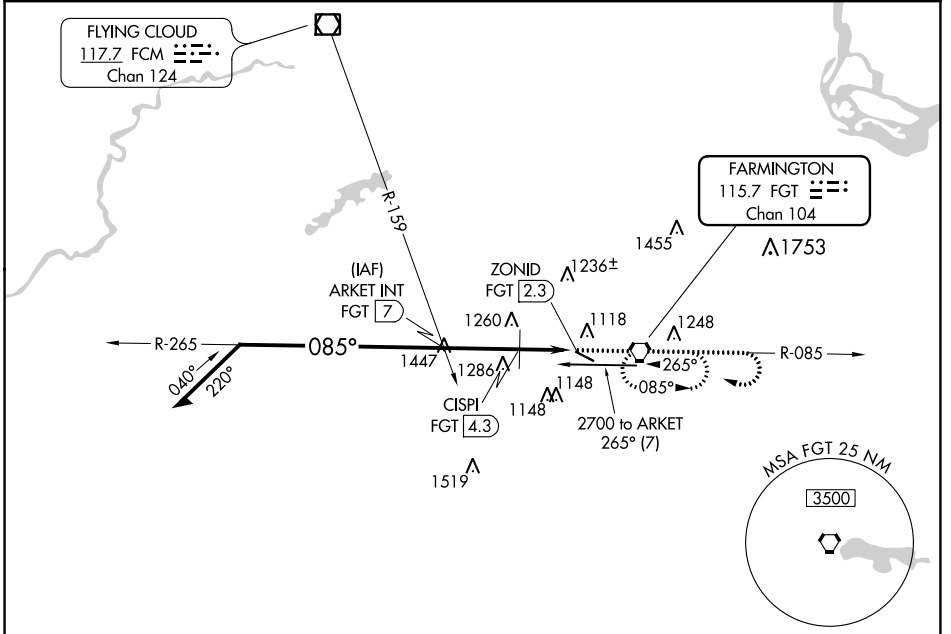
VOR RWY 12

AIRLAKE (LVN)

⚠ Rwy 12 helicopter visibility reduction below 1 SM NA.
 Straight-in Rwy 12, Circling Rwy 12 at night, operational VGSJ required, remain on or above VGSJ glidepath until threshold.

MISSED APPROACH: Climb to 2800 then right turn direct FGT VORTAC and hold.

AWOS-3 118.0	MINNEAPOLIS APP CON 134.7 284.7	CLNC DEL 118.95	UNICOM 123.0 (CTAF) 0
------------------------	---	---------------------------	---------------------------------



NC-1, 08 AUG 2024 to 05 SEP 2024

NC-1, 08 AUG 2024 to 05 SEP 2024

	2700		2600		1660		2800		FGT	
	265°		085°		3.16° TCH 54		↑		↻	
	ARKET INT FGT 7		CISPI FGT 4.3		ZONID FGT 2.3		2800		FGT	
	2.7 NM		2 NM				VGSJ and descent angles not coincident (VGSJ Angle 3.00/TCH 45).		⬡	
CATEGORY	A	B	C	D						
S-12	1660-1	699 (700-1)	1660-2	699 (700-2)						
C CIRCLING	1660-1	699 (700-1)	1660-2	1700-2¼						
			699 (700-2)	739 (800-2¼)						
CISPI FIX MINIMUMS										
S-12	1520-1	559 (600-1)	1520-1½	559 (600-1½)						
C CIRCLING	1520-1	559 (600-1)	1660-2	1700-2¼						
			699 (700-2)	739 (800-2¼)						

