

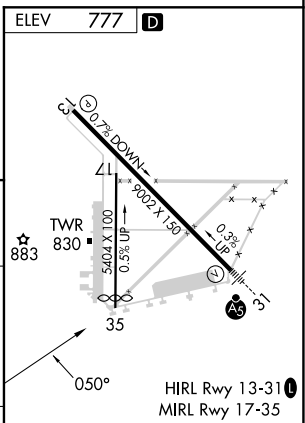
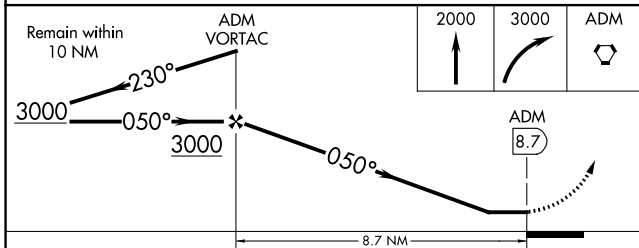
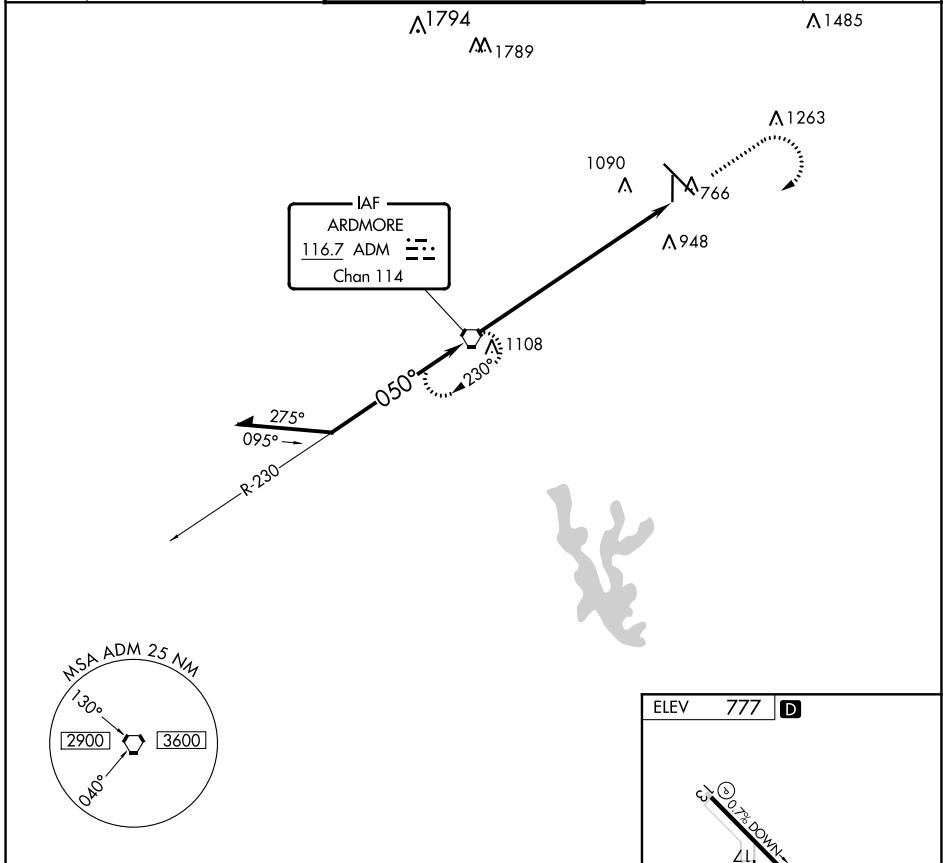
VORTAC ADM <b>116.7</b> Chan 114	APP CRS <b>050°</b>	Rwy Idg TDZE Apt Elev	<b>N/A</b> <b>N/A</b> <b>777</b>
--	------------------------	-----------------------------	--

**VOR-B**  
ARDMORE MUNI (ADM)

**⚠** Circling Rwy 35 NA at night. Rwy 35 helicopter visibility reduction below 1 SM NA.  
**⚠** When local altimeter setting not received, use Ardmore Downtown Exec altimeter setting and increase all MDAs 40 feet.

**MISSED APPROACH:** Climb to 2000 then climbing right turn to 3000 direct ADM VORTAC and hold.

ATIS <b>125.6</b>	FORT WORTH CENTER <b>124.75 323.0</b>	ARDMORE TOWER ★ <b>118.5 (CTAF) 0 257.7</b>	GND CON <b>121.8</b>	UNICOM <b>122.95</b>
----------------------	--	--	-------------------------	-------------------------



CATEGORY	A	B	C	D	FAF to MAP 8.7 NM					
<b>C</b> CIRCLING	1540-1	763 (800-1)	1540-2¼ 763 (800-2¼)	1700-3 923 (1000-3)	Knots	60	90	120	150	180
					Min:Seq	8:42	5:48	4:21	3:29	2:54

SC-1, 05 SEP 2024 to 03 OCT 2024

SC-1, 05 SEP 2024 to 03 OCT 2024