

NDB EMR 385	APP CRS 104°	Rwy Idg TDZE Apt Elev	3407 422 422
-----------------------	------------------------	-----------------------------	---

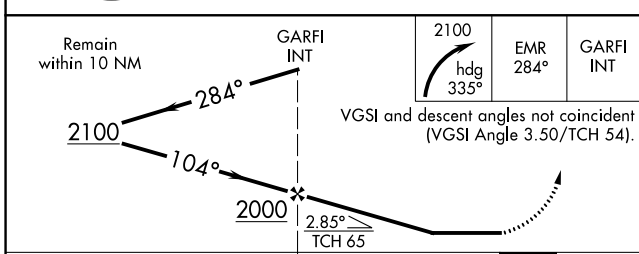
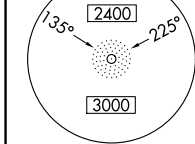
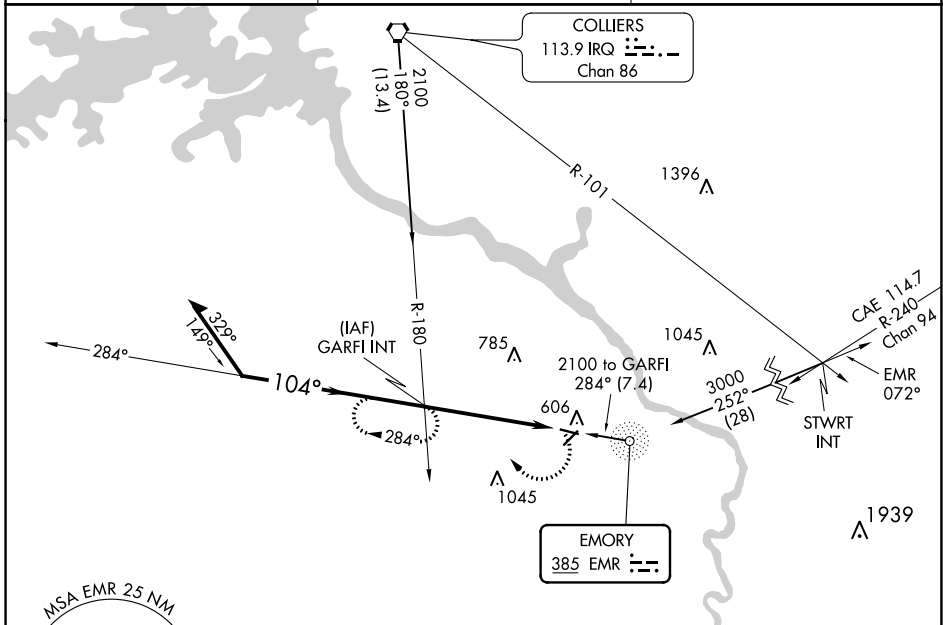
NDB RWY 11

DANIEL FLD (DNL)

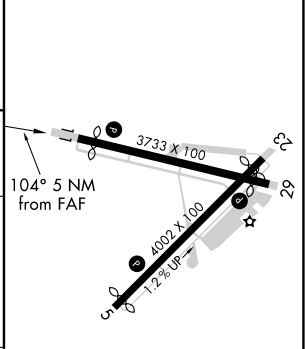
⚠ Helicopter visibility reduction below 1 SM NA. When local altimeter setting not received, use Augusta Rgnl at Bush Fld altimeter setting and increase all MDA 60 feet and increase S-11 and Circling Cats C and D visibility ¼ mile. Procedure NA at night.

⚠ MISSED APPROACH: Climbing right turn to 2100 heading 335° and EMR 284° bearing to GARFI INT and hold.

ASOS 135.275	AUGUSTA APP CON * 126.8 270.3	UNICOM 123.05 (CTAF) 0
------------------------	---	----------------------------------



ELEV 422	D TDZE 422
----------	-------------------



CATEGORY	A	B	C	D
S-11	1040-1 618 (700-1)		1040-1¾ 618 (700-1¾)	1040-2 618 (700-2)
C CIRCLING	1040-1 618 (700-1)		1400-3 978 (1000-3)	

REIL Rwy 11 0
MRL Rwys 5-23 and 11-29 0
FAF to MAP 5 NM
Knots: 60 90 120 150 180
Min:Sec: 5:00 3:20 2:30 2:00 1:40

SE-4, 05 SEP 2024 to 03 OCT 2024

SE-4, 05 SEP 2024 to 03 OCT 2024