

LOC/DME I-DGU 111.3 Chan 50	APP CRS 272°	Rwy ldg 7001 TDZE 17 Apt Elev 19
-------------------------------------------------	------------------------	-------------------------------------------------------------

ILS or LOC RWY 27

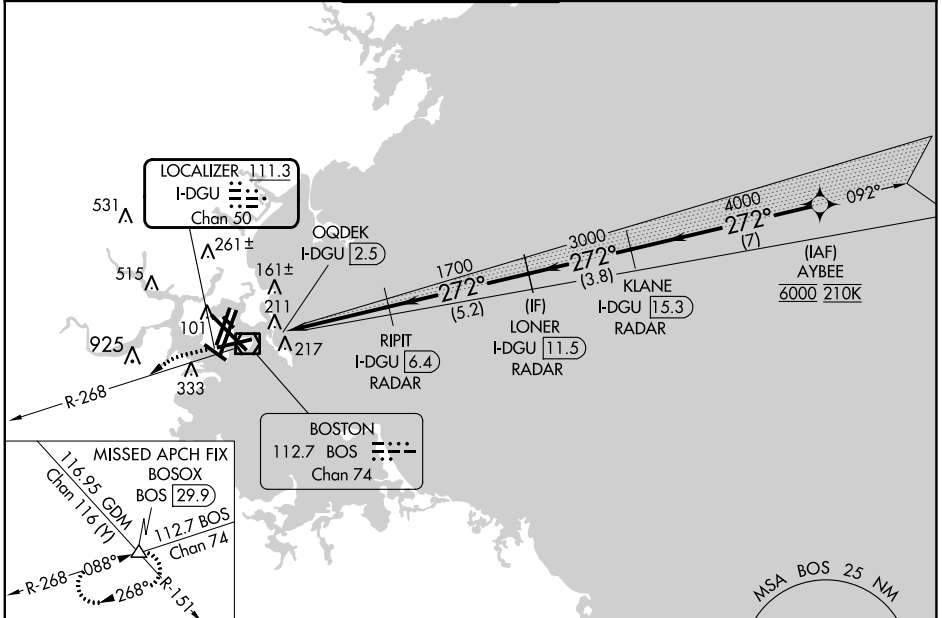
GENERAL EDWARD LAWRENCE LOGAN INTL (BOS)

RNP APCH - GPS. From AYBEE.

RADAR required for procedure entry. DME or RADAR required.

MISSED APPROACH: Climb to 3000 on BOS VOR/DME R-268 to BOSOX INT/BOS 29.9 DME and hold.

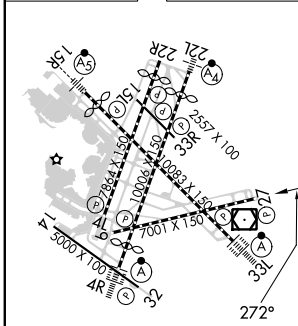
D-ATIS 135.0	BOSTON APP CON 120.6 263.1	BOSTON TOWER 128.8 257.8 (WEST) 132.225 257.8 (EAST)	GND CON 121.75 121.9	CLNC DEL 121.65 257.8	CPDLC
------------------------	--------------------------------------	--------------------------------------------------------------------------	--------------------------------	---------------------------------	-------



NE-1, 05 SEP 2024 to 03 OCT 2024

NE-1, 05 SEP 2024 to 03 OCT 2024

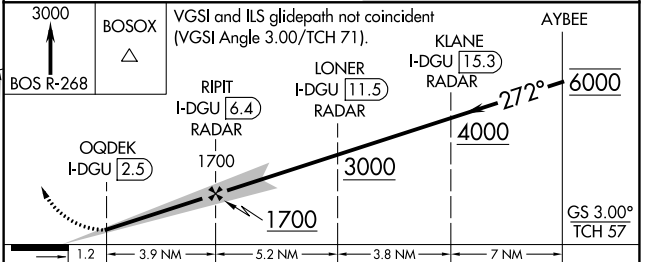
ELEV 19	D	TDZE 17
---------	----------	---------



TDZ/CL Rwy 4R, 15R and 33L
REIL Rwy 4L, 27 and 32
MIRL Rwy 15L-33R
HIRL Rwy 4L-22R, 4R-22L, 9-27, 14-32 and 15R-33L

FAF to MAP 3.9 NM

Knots	60	90	120	150	180
Min:Sec	3:48	2:32	1:54	1:31	1:16



CATEGORY	A	B	C	D
S-ILS 27		460-1½	443 (500-1½)	
S-LOC 27		460-1½	443 (500-1½)	