

# WYLYY FIVE DEPARTURE (RNAV)

AL-58 (FAA)

BOSTON, MASSACHUSETTS

NE-1, 05 SEP 2024 to 03 OCT 2024

**▼ DEPARTURE ROUTE DESCRIPTION**  
**TAKEOFF RUNWAY 27:** Climb on heading 272° to intercept course 234° to cross WYLYY at or above 2300, then on depicted route to CYOTI, thence....

....expect vectors to assigned fix/**NAVAID** (see notes). Maintain 5000 or lower assigned altitude. Expect clearance to filed altitude/flight level within ten (10) minutes after departure.

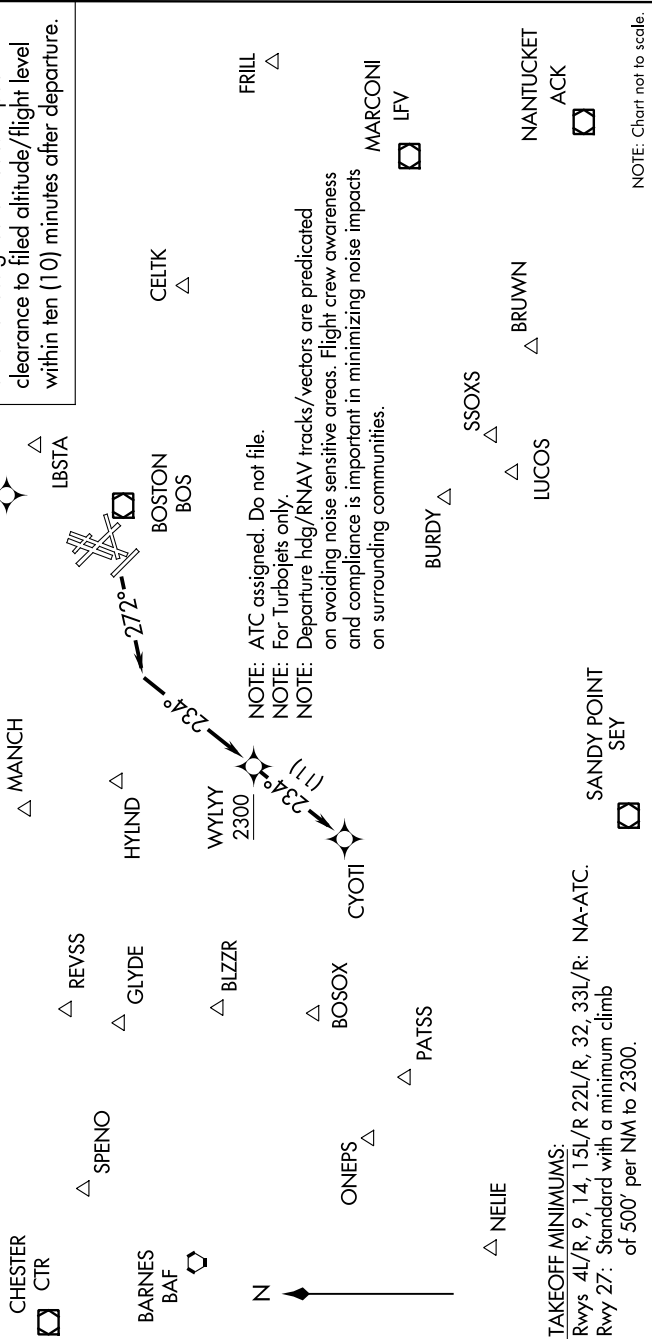
**TOP ALTITUDE:**  
**5000**

**RNAV 1 - DME/DME/IRU or GPS.**  
**RADAR required.**

**BOSTON DEP CON**  
 133.0  
 D-ATIS 135.0  
 CLNC DEL 121.65 257.8  
 CPDC 121.75 121.9  
 GND CON 121.75 121.9  
**BOSTON TOWER**  
 128.8 257.8 (WEST)  
 132.225 257.8 (EAST)

**NOTE:** Departures assigned routing via LBSTA, PEASE, MANCH, HYLND, or REVSS direct SPENO; BLZZR direct ONEPS, PATSS, GLYDE, or BOSOX expect RADAR vectors to the right to assigned route/fix.

**NOTE:** Departures assigned routing via CELTK, FRILL, LFW VOR/DME, ACK VOR/DME, BRUWN, SSOXS, LUCOS, SEY VOR/DME, or BURDY expect RADAR vectors to the left to assigned route/fix.



**TAKEOFF MINIMUMS:**  
 Rwy 4L/R, 9, 14: 15L/R 22L/R, 32, 33L/R: NA-ATC.  
 Rwy 27: Standard with a minimum climb of 500' per NM to 2300.

NOTE: Chart not to scale.

# WYLYY FIVE DEPARTURE (RNAV)

NE-1, 05 SEP 2024 to 03 OCT 2024