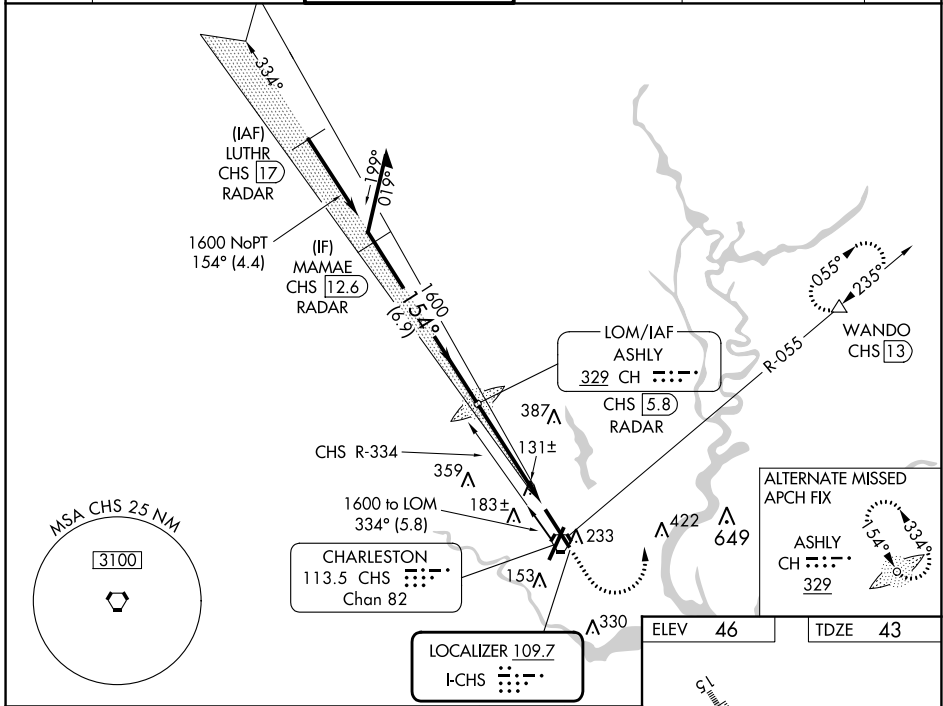


LOC I-CHS <b>109.7</b>	APP CRS <b>154°</b>	Rwy Idg TDZE Apt Elev	<b>9001</b> <b>43</b> <b>46</b>
---------------------------	------------------------	-----------------------------	---------------------------------------

**ILS RWY 15 (CAT II)**  
CHARLESTON AFB/INTL (CHS)

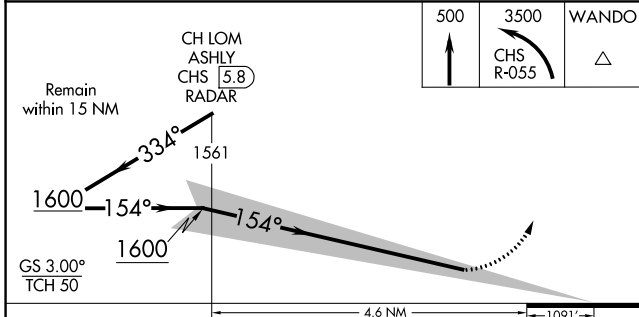
DME required.	ALSF-2	MISSED APPROACH: Climb to 500 then climbing left turn to 3500 on CHS VORTAC R-055 to WANDO/CHS VORTAC 13 DME and hold, continue climb-in-hold to 3500.
DME from CHS VORTAC. Simultaneous reception of I-CHS and CHS DME required.		

D-ATIS <b>124.75</b>	CHARLESTON APP CON <b>120.7 306.925</b>	CHARLESTON TOWER <b>126.0 239.0</b>	GND CON <b>121.9 348.6</b>	CLNC DEL <b>127.325 291.65</b>	CPDLC
-------------------------	--	--	-------------------------------	-----------------------------------	-------



SE-2, 05 SEP 2024 to 03 OCT 2024

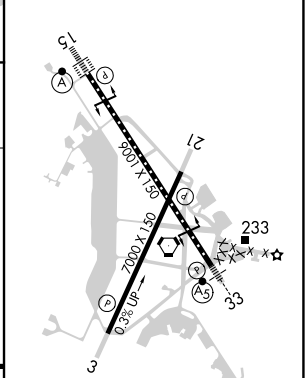
SE-2, 05 SEP 2024 to 03 OCT 2024



CATEGORY	A	B	C	D
S-ILS 15		RA 97/12	100 DA 143	

**CATEGORY II ILS - SPECIAL AIRCREW & AIRCRAFT CERTIFICATION REQUIRED**

ELEV 46	TDZE 43
---------	---------



TDZ/CL Rwy 15  
REIL Rwy 3 and 21  
HIRL Rwy 3-21 and 15-33