

(MLTRE3.MLTRE) 23166

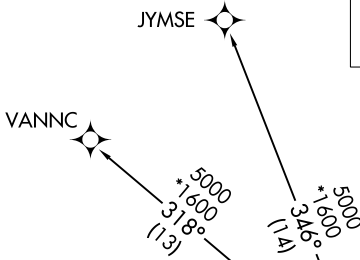
AL-76 (FAA)

CHARLESTON AFB/INTL (CHS)
CHARLESTON, SOUTH CAROLINA

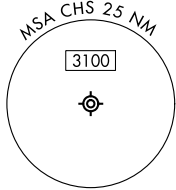
MLTRE THREE DEPARTURE (RNAV)

**TOP ALTITUDE:
4000**

D-ATIS
124.75
CLNC DEL
127.325 291.65
CPDLC
GND CON
121.9 348.6
CHARLESTON TOWER
126.0 239.0
CHARLESTON DEP CON
121.275 379.925



NOTE: For non-GPS equipped aircraft, CHS and VAN DMEs must be operational for takeoff Rwy 21.



TAKEOFF MINIMUMS:
Rwys 3, 15, 21, 33: Standard.

RNAV 1 - DME/DME/IRU or GPS.
RADAR required for non-GPS equipped aircraft.

DEPARTURE ROUTE DESCRIPTION

TAKEOFF RUNWAY 3: Climb on heading 031° to 546, then left turn direct to cross MLTRE at or above 4000, thence. . .

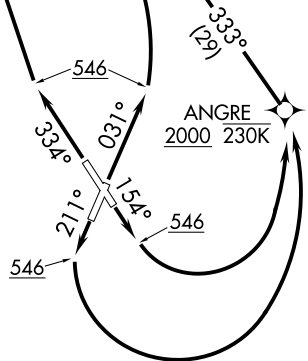
TAKEOFF RUNWAY 15: Climb on heading 154° to 546, then left turn direct to cross ANGRE at or above 2000 at or below 230K, then on track 333° to cross MLTRE at or above 4000, thence. . .

TAKEOFF RUNWAY 21: Climb on heading 211° to 546, then left turn direct to cross ANGRE at or above 2000 at or below 230K, then on track 333° to cross MLTRE at or above 4000, thence. . .

TAKEOFF RUNWAY 33: Climb on heading 334° to 546, then direct to cross MLTRE at or above 4000, thence. . .

. . . on assigned transition. Maintain 4000. Expect clearance to filed altitude 10 minutes after departure.

JYMSE TRANSITION (MLTRE3.JYMSE):
VANNC TRANSITION (MLTRE3.VANNC):



NOTE: Chart not to scale.

MLTRE THREE DEPARTURE (RNAV)

(MLTRE3.MLTRE) 20APR23

CHARLESTON, SOUTH CAROLINA
CHARLESTON AFB/INTL (CHS)

SE-2, 05 SEP 2024 to 03 OCT 2024

SE-2, 05 SEP 2024 to 03 OCT 2024