

VORTAC CHS 113.5 Chan 82	APP CRS 036°	Rwy Idg 7000 TDZE 35 Apt Elev 46
--	------------------------	---

VOR/DME or TACAN RWY 3

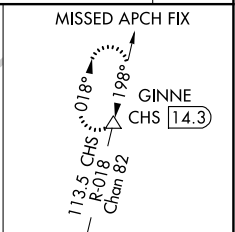
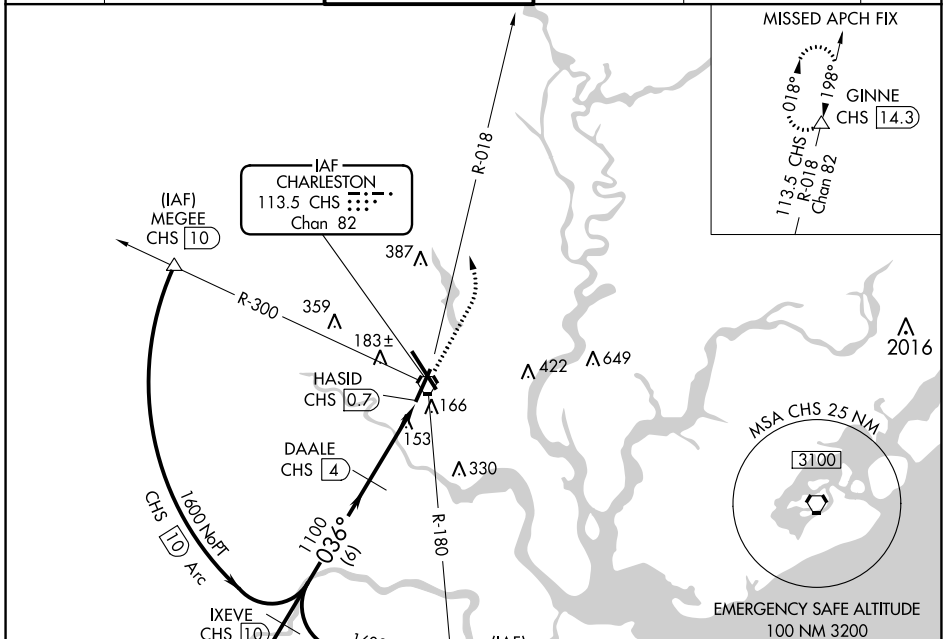
CHARLESTON AFB/INTL (CHS)

DME required.

▽
▲

MISSED APPROACH: Climb to 1000 then climbing left turn to 2000 on CHS R-018 to GINNE/14.3 DME and hold.

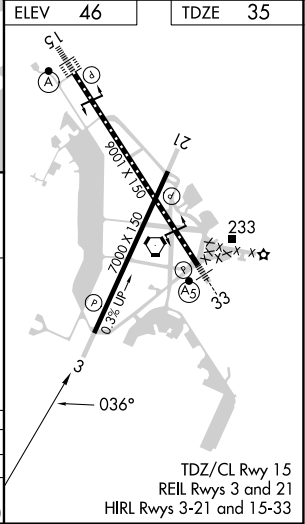
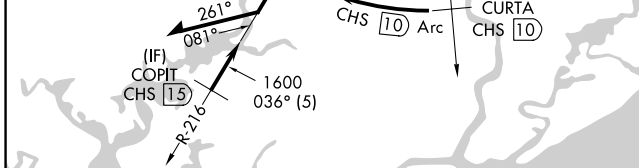
D-ATIS 124.75	CHARLESTON APP CON 120.7 306.925	CHARLESTON TOWER 126.0 239.0	GND CON 121.9 348.6	CLNC DEL 127.325 291.65	CPDLC
-------------------------	--	--	-------------------------------	-----------------------------------	-------



SE-2, 05 SEP 2024 to 03 OCT 2024

SE-2, 05 SEP 2024 to 03 OCT 2024

ELEV 46 TDZE 35



Remain within 15 NM	1000	2000	GINNE		
	↑	CHS R-018	▲		
VGSIs and descent angles not coincident (VGSi Angle 3.00/TCH 50).					
CATEGORY	A	B	C	D	E
S-3	420-1	385 (400-1)	420-1 1/8	385 (400-1 1/8)	
CIRCLING	540-1	494 (500-1)	540-1 1/2	740-2 1/4	740-2 1/2
			494 (500-1 1/2)	694 (700-2 1/4)	694 (700-2 1/2)

VOR/DME or TACAN RWY 3