

LOC/DME I-LPI <b>109.1</b> Chan <b>28</b>	APP CRS <b>172°</b>	Rwy Idg <b>13500</b> TDZE <b>6187</b> Apt Elev <b>6187</b>
---	------------------------	--

# ILS RWY 17L (SA CAT I & II)

CITY OF COLORADO SPRINGS MUNI (COS)

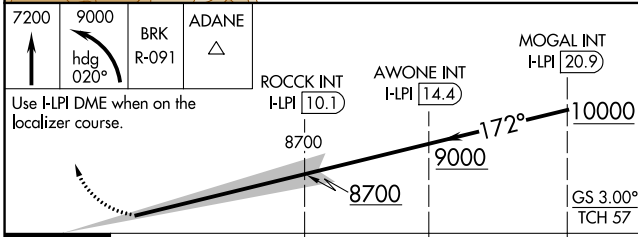
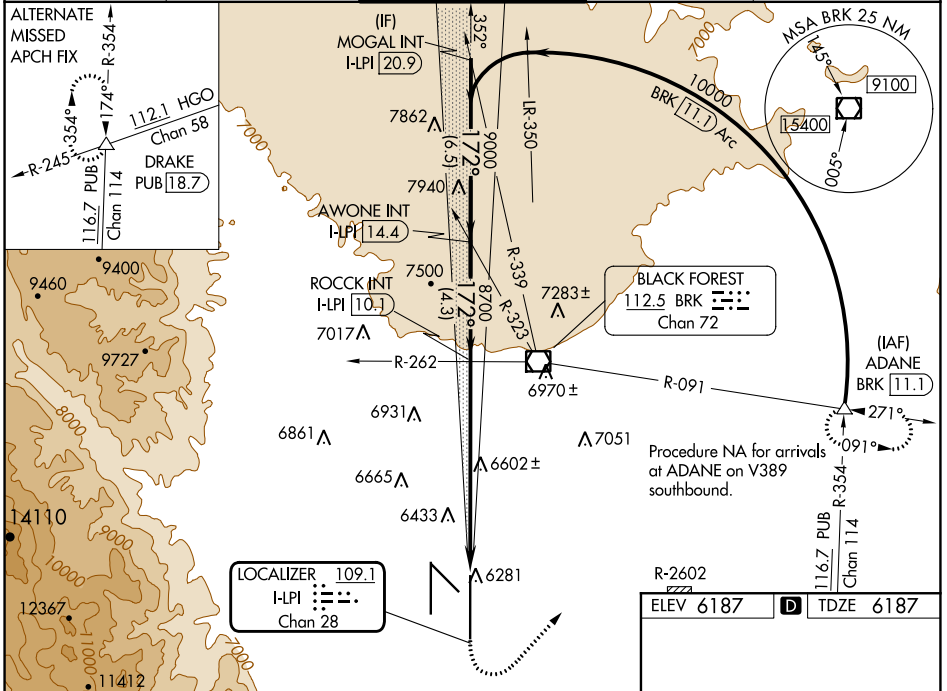
DME or RADAR required for procedure entry.

Simultaneous approach authorized with Rwy 17R.  
SA CAT I: Required specific OPSPEC, MSPEC, or LOA approval and use of HUD to DH. SA CAT II: Reduced Lighting: Requires specific OPSPEC, MSPEC, or LOA approval and use of autoland or HUD to touchdown.

MALS R

MISSED APPROACH: Climb to 7200 then climbing left turn to 9000 on heading 020° and on BRK VOR/DME R-091 to ADANE INT/BRK VOR/DME 11.1 DME and hold.

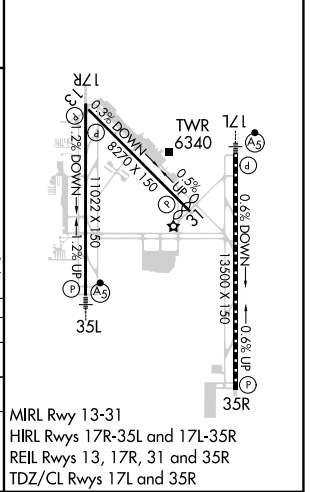
ATIS <b>125.0 254.3</b>	SPRINGS APP CON <b>124.0 257.875</b>	SPRINGS TOWER <b>119.9 360.6</b>	GND CON <b>121.7 348.6</b>	CLNC DEL <b>134.45 363.125</b>
----------------------------	---	-------------------------------------	-------------------------------	-----------------------------------



CATEGORY	A	B	C	D
S-ILS 17L	SA CAT I RA 169/14 150 DA 6337			
S-ILS 17L	SA CAT II RA 105/16 100 DA 6287			

**SA CATEGORY I & II ILS SPECIAL AIRCREW & AIRCRAFT CERTIFICATION REQUIRED**

ELEV 6187	TDZE 6187
-----------	-----------



SW-1, 05 SEP 2024 to 03 OCT 2024

SW-1, 05 SEP 2024 to 03 OCT 2024