

LOC/DME I-AHI 109.1 Chan 28	APP CRS 352°	Rwy Idg 13500 TDZE 6118 Apt Elev 6187
--	------------------------	--

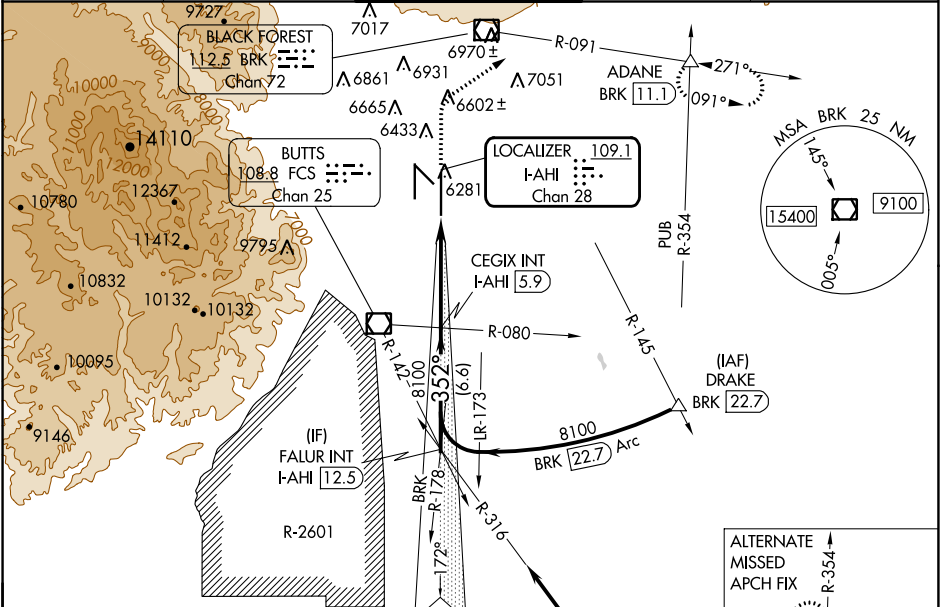
ILS or LOC RWY 35R

CITY OF COLORADO SPRINGS MUNI (COS)

⚠ RADAR required when R-2601 in use.

MISSED APPROACH: Climb to 6700 then climbing right turn to 9000 on heading 047° and on BRK VOR/DME R-091 to ADANE INT/BRK 11.1 DME and hold.

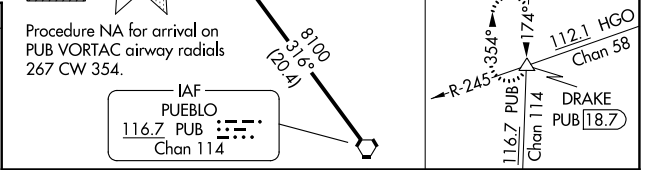
ATIS 125.0 254.3	SPRINGS APP CON 124.0 257.875	SPRINGS TOWER 119.9 360.6	GND CON 121.7 348.6	CLNC DEL 134.45 363.125
----------------------------	---	-------------------------------------	-------------------------------	-----------------------------------



ELEV 6187 **D** TDZE 6118

MIRL Rwy 13-31
HIRL Rws 17R-35L and 17L-35R
REIL Rws 13, 17R, 31 and 35R
TDZ/CL Rws 17L and 35R

TWR 6340
ZL 1
ZL 2
ZL 3
ZL 4
ZL 5
ZL 6
ZL 7
ZL 8
ZL 9
ZL 10
ZL 11
ZL 12
ZL 13
ZL 14
ZL 15
ZL 16
ZL 17
ZL 18
ZL 19
ZL 20
ZL 21
ZL 22
ZL 23
ZL 24
ZL 25
ZL 26
ZL 27
ZL 28
ZL 29
ZL 30
ZL 31
ZL 32
ZL 33
ZL 34
ZL 35
ZL 36
ZL 37
ZL 38
ZL 39
ZL 40
ZL 41
ZL 42
ZL 43
ZL 44
ZL 45
ZL 46
ZL 47
ZL 48
ZL 49
ZL 50



FAF to MAP 6.1 NM

Knots	60	90	120	150	180
Min:Sec	6:06	4:04	3:03	2:26	2:02

C CIRCLING

CATEGORY	A	B	C	D
	S-ILS 35R	6318/40	200 (200-¾)	
S-LOC 35R	6420/55	302 (300-1)	6420/45	302 (300-¾)
	6740-1	6800-1	7040-2½	7260-3
C CIRCLING	553 (600-1)	613 (700-1)	853 (900-2½)	1073 (1100-3)

VGSI and ILS glidepath not coincident (VGSI Angle 3.00/TCH 71).

FALUR INT I-AHI 12.5

CEGIX INT I-AHI 5.9

8100 352°

8100

Use I-AHI DME when on the localizer course.

6.6 NM

5.3 NM

0.8 NM

6700 9000

CEGIX INT I-AHI 5.9

8100

I-AHI DME ANTENNA *I-AHI 0.6

6700 9000

CEGIX INT I-AHI 5.9

8100

I-AHI DME ANTENNA *I-AHI 0.6

6700 9000

CEGIX INT I-AHI 5.9

8100

I-AHI DME ANTENNA *I-AHI 0.6

SW-1, 05 SEP 2024 to 03 OCT 2024

SW-1, 05 SEP 2024 to 03 OCT 2024