

APP CRS 172°	Rwy Idg TDZE Apt Elev	11022 6177 6187
------------------------	-----------------------------	--------------------------------------------

RNAV (RNP) Z RWY 17R

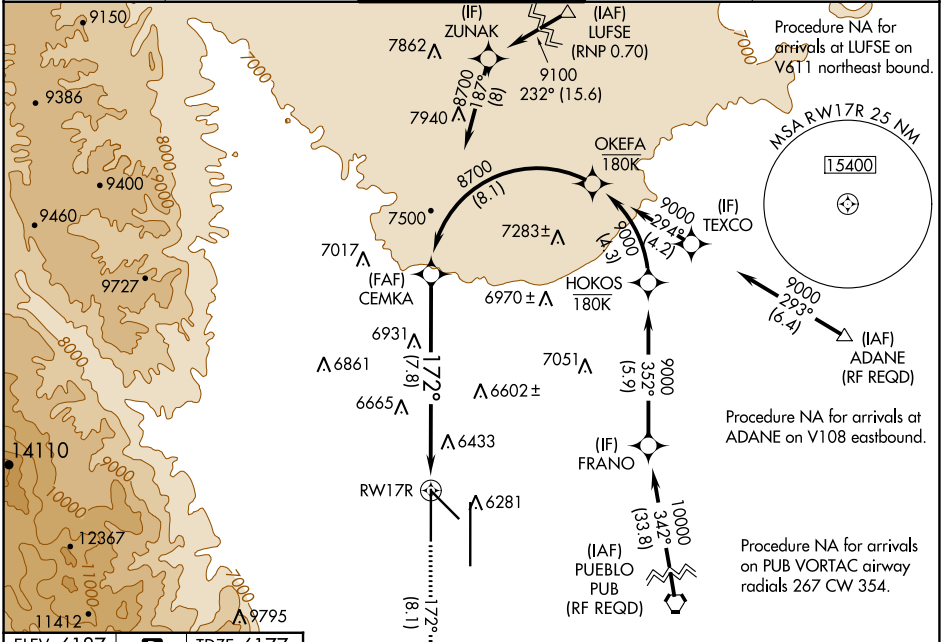
CITY OF COLORADO SPRINGS MUNI (COS)

RNP AR APCH - GPS.

⚠ For uncompensated Baro-VNAV systems, procedure NA below -21°C or above 45°C. Simultaneous approach authorized.

MISSED APPROACH: Climb to 9000 on track 172° to KUSAC and on track 125° to JEMKI and on track 084° to DRAKE and hold.

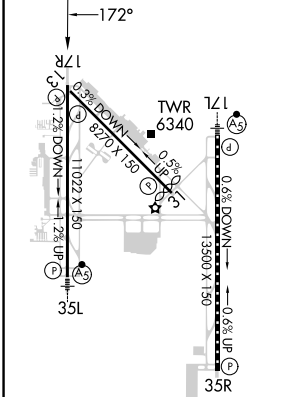
ATIS 125.0 254.3	SPRINGS APP CON 124.0 257.875	SPRINGS TOWER 119.9 360.6	GND CON 121.7 348.6	CLNC DEL 134.45 363.125
----------------------------	-----------------------------------------	-------------------------------------	-------------------------------	-----------------------------------



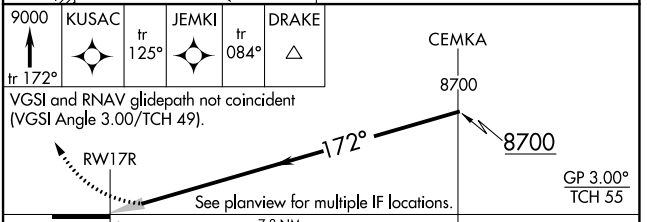
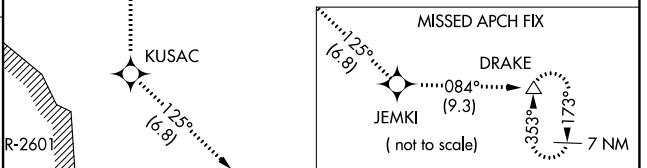
SW-1, 05 SEP 2024 to 03 OCT 2024

SW-1, 05 SEP 2024 to 03 OCT 2024

ELEV 6187 **D** TDZE 6177



MIRL Rwy 13-31
HIRL Rws 17R-35L and 17L-35R
REIL Rws 13, 17R, 31 and 35R
TDZ/CL Rws 17L and 35R



CATEGORY	A	B	C	D
RNP 0.22 DA		6659-1½	482 (500-1½)	
RNP 0.30 DA		6902-2½	725 (800-2½)	

AUTHORIZATION REQUIRED