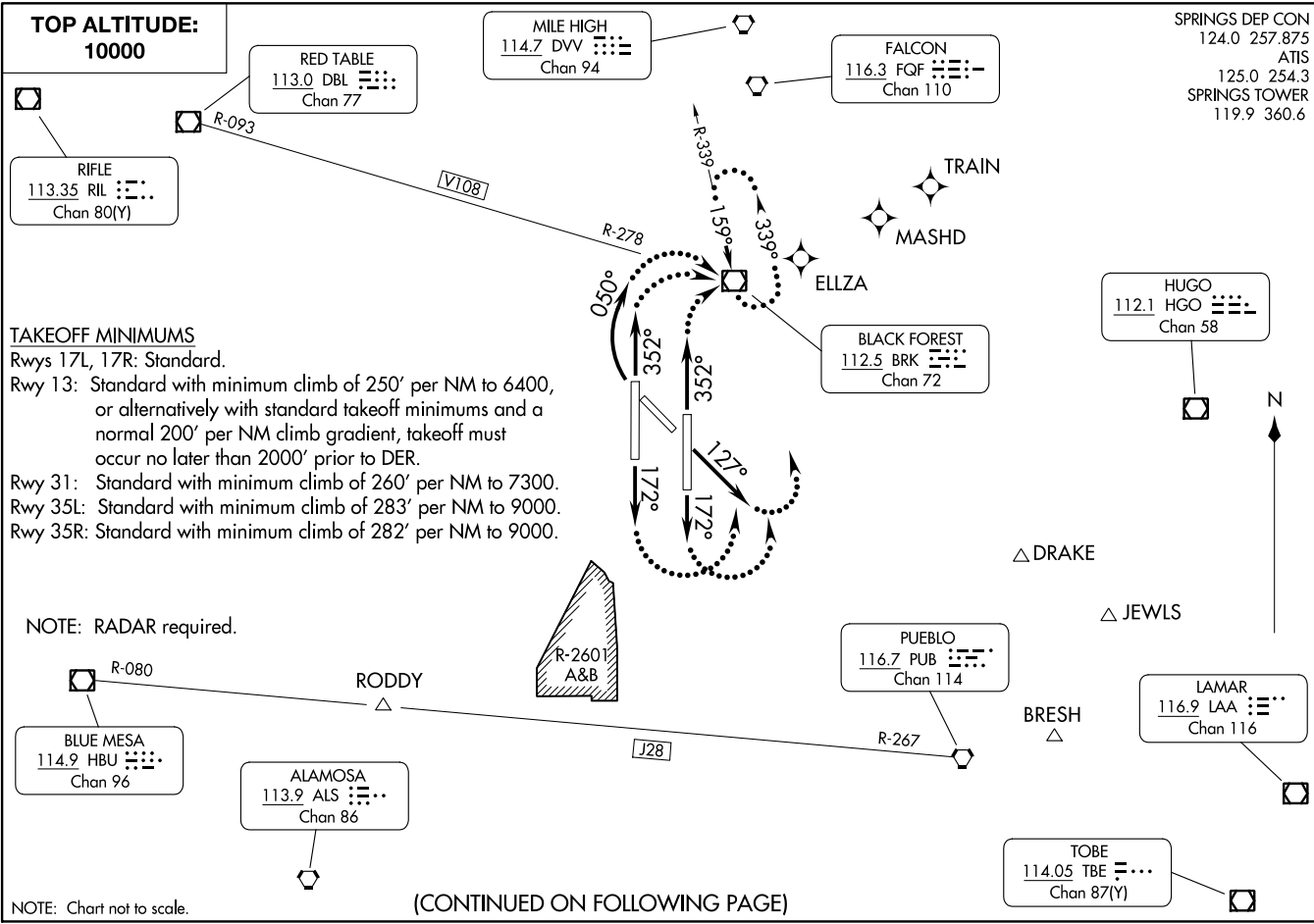


SPRINGS DEP CON  
124.0 257.875  
ATIS  
125.0 254.3  
SPRINGS TOWER  
119.9 360.6



**TOP ALTITUDE:**  
**10000**

RIFLE  
113.35 RIL : : : :  
Chan 80(Y)

RED TABLE  
113.0 DBL : : : :  
Chan 77

MILE HIGH  
114.7 DVV : : : :  
Chan 94

FALCON  
116.3 FQF : : : :  
Chan 110

HUGO  
112.1 HGO : : : :  
Chan 58

BLACK FOREST  
112.5 BRK : : : :  
Chan 72

PUEBLO  
116.7 PUB : : : :  
Chan 114

LAMAR  
116.9 LAA : : : :  
Chan 116

TOBE  
114.05 TBE : : : :  
Chan 87(Y)

**TAKEOFF MINIMUMS**

Rwys 17L, 17R: Standard.  
Rwy 13: Standard with minimum climb of 250' per NM to 6400, or alternatively with standard takeoff minimums and a normal 200' per NM climb gradient, takeoff must occur no later than 2000' prior to DER.  
Rwy 31: Standard with minimum climb of 260' per NM to 7300.  
Rwy 35L: Standard with minimum climb of 283' per NM to 9000.  
Rwy 35R: Standard with minimum climb of 282' per NM to 9000.

NOTE: RADAR required.

BLUE MESA  
114.9 HBU : : : :  
Chan 96

ALAMOSA  
113.9 ALS : : : :  
Chan 86

(CONTINUED ON FOLLOWING PAGE)

NOTE: Chart not to scale.



DEPARTURE ROUTE DESCRIPTION

TAKEOFF RUNWAY 13: Climb heading 127° for RADAR vectors to filed/assigned route, thence. . . .

TAKEOFF RUNWAY 17L: Climb heading 172° for RADAR vectors to filed/assigned route, thence. . . .

TAKEOFF RUNWAY 17R: Climb heading 172° for RADAR vectors to filed/assigned route, thence. . . .

TAKEOFF RUNWAY 35R: Climb heading 352° for RADAR vectors to filed/assigned route, thence. . . .

TAKEOFF RUNWAY 35L: Climb heading 352° for RADAR vectors to filed/assigned route, thence. . . .

TAKEOFF RUNWAY 31: Climbing right turn heading 050° for RADAR vectors to filed/assigned route, thence. . . .

. . . . maintain 10000. Expect clearance to filed altitude/flight level ten minutes after departure.

LOST COMMUNICATIONS: If not in contact with departure control within 1 minute after departure from runways 13 and 17L/R turn left, from runway 31 and 35L/R turn right direct BRK VOR/DME, thence via filed/assigned route.

AIRCRAFT FILED V108 WESTBOUND: Continue climb in holding pattern to cross BRK VOR/DME at or above 14000.

SW-1, 05 SEP 2024 to 03 OCT 2024

SW-1, 05 SEP 2024 to 03 OCT 2024