

LOC/DME I-EKO 108.5 Chan 22	APP CRS 243°	Rwy ldg TDZE 6418 5064 Apt Elev 5140
------------------------------------------	------------------------	--------------------------------------------------------------------

LDA/DME RWY 24

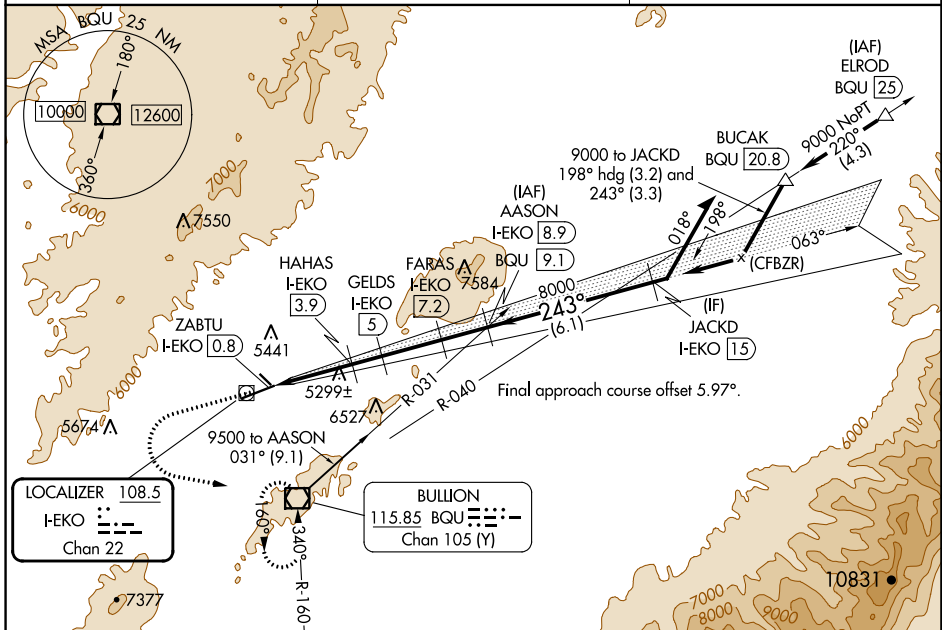
ELKO RGNL (EKO)

⚠ Inoperative table does not apply to Cats A and B. For inop MALSR, increase S-24 Cat C and D visibility to 2 miles. Rwy 24 helicopter visibility reduction below 3/4 SM NA. Circling Rwy 24 NA at night.

MALSR

MISSED APPROACH: Climb to 6600 then climbing left turn to 10000 direct BQU VOR/DME and hold, continue climb-in-hold to 10000.

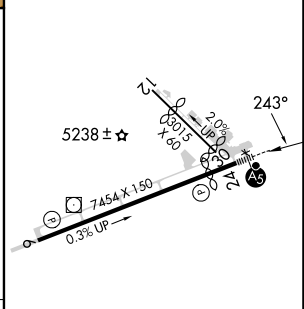
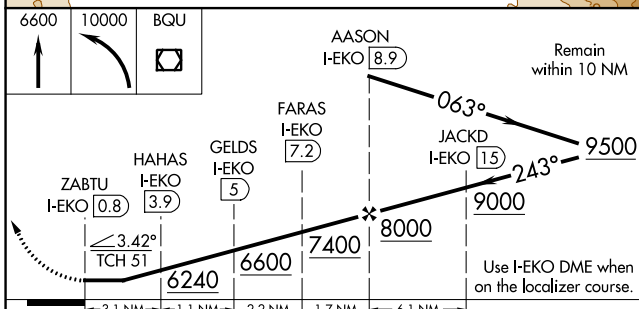
ASOS 119.275	SALT LAKE CENTER 132.25 338.35	UNICOM 123.0 (CTAF)
------------------------	------------------------------------------	-------------------------------



LOCALIZER 108.5
I-EKO
Chan 22

BULLION 115.85 BQU
Chan 105 (Y)

ELEV 5140	TDZE 5064
-----------	-----------



CATEGORY	A	B	C	D
S-24	5800-1	736 (700-1)	5800-1 5/8	736 (700-1 1/2)
C CIRCLING	5920-1 780 (800-1)	6100-1 1/2 960 (1000-1 1/2)	6620-3 1480 (1500-3)	6980-3 1840 (1900-3)

MIRL Rwy 6-24

SW-4, 05 SEP 2024 to 03 OCT 2024

SW-4, 05 SEP 2024 to 03 OCT 2024