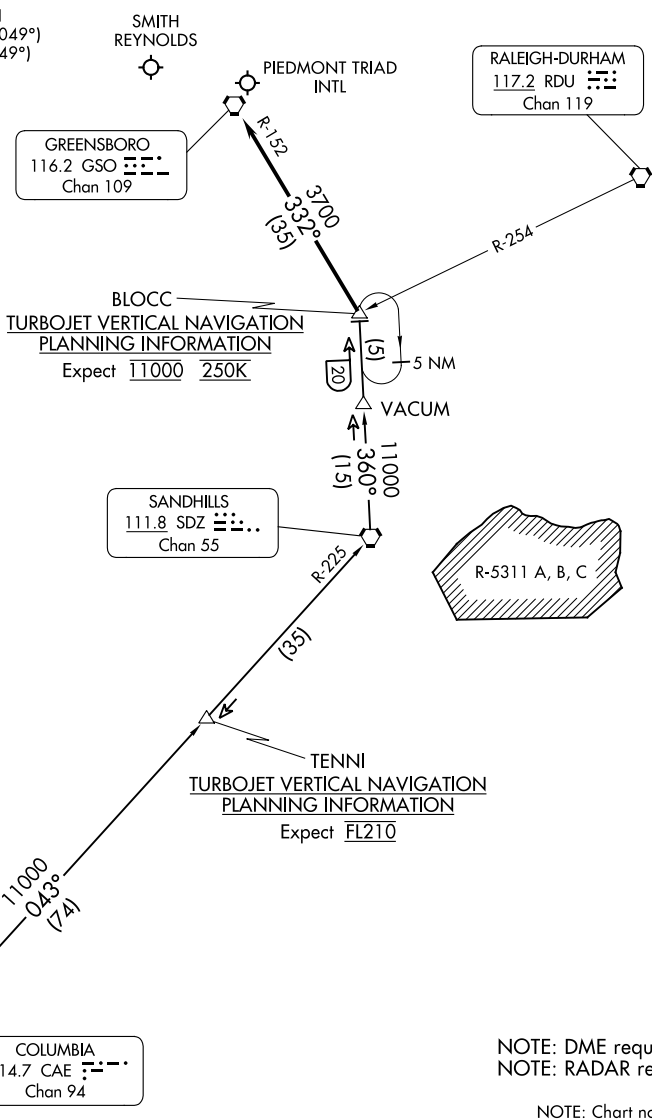


# BLOCC TWO ARRIVAL

GREENSBORO APP CON  
 124.35 269.225 (250°-049°)  
 126.6 327.075 (050°-249°)  
 GSO D-ATIS  
 128.55  
 INT ATIS  
 121.3



**BLOCC**  
 TURBOJET VERTICAL NAVIGATION  
 PLANNING INFORMATION  
 Expect 11000 250K

**TENNI**  
 TURBOJET VERTICAL NAVIGATION  
 PLANNING INFORMATION  
 Expect FL210

NOTE: DME required.  
 NOTE: RADAR required.

NOTE: Chart not to scale.

## ARRIVAL ROUTE DESCRIPTION

COLUMBIA TRANSITION (CAE.BLOCC2): From over CAE VORTAC on CAE R-043 and SDZ R-225 to SDZ VORTAC then on SDZ R-360 to BLOCC. Thence. . .

. . . from over BLOCC on GSO R-152 to GSO VORTAC. Expect RADAR vectors to final approach course.

SE-2, 05 SEP 2024 to 03 OCT 2024

SE-2, 05 SEP 2024 to 03 OCT 2024

# BLOCC TWO ARRIVAL

(BLOCC.BLOCC2) 24MAY18