

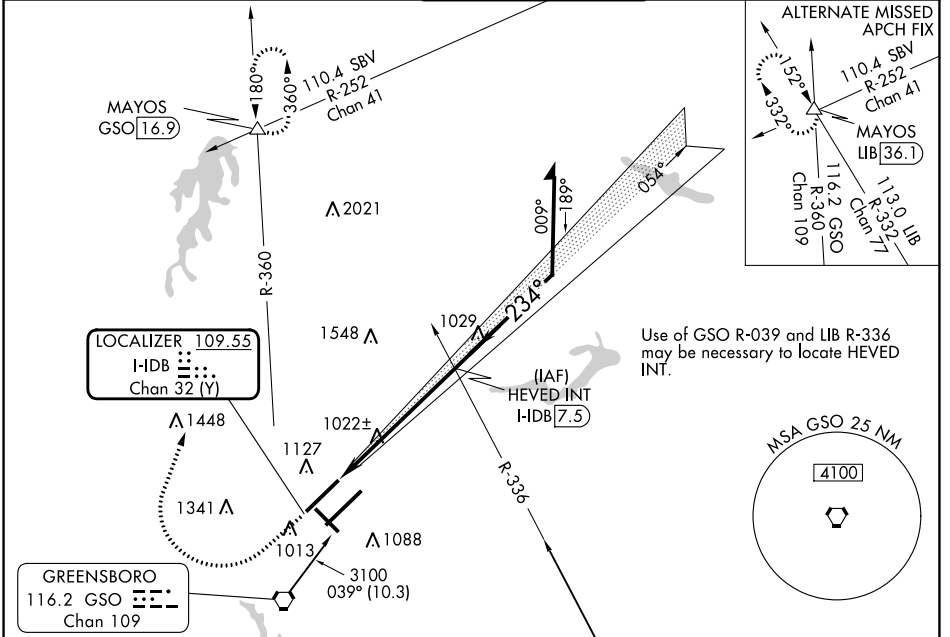
LOC/DME I-IDB <b>109.55</b> Chan 32 (Y)	APP CRS <b>234°</b>	Rwy Idg TDZE <b>9000 864</b>	Apt Elev <b>926</b>
---	------------------------	---------------------------------	------------------------

# ILS or LOC RWY 23R

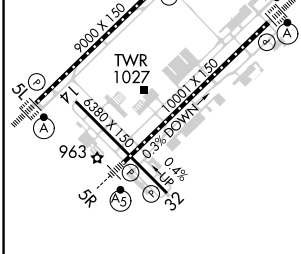
PIEDMONT TRIAD INTL (GSO)

<p>Simultaneous approach authorized.</p>	<p>MALSR</p>	<p>MISSED APPROACH: Climb to 1500 then climbing right turn to 3100 on heading 015° and GSO VORTAC R-360 to MAYOS INT/GSO 16.9 DME and hold.</p>	
		<p>Use of GSO R-039 and LIB R-336 may be necessary to locate HEVED INT.</p>	

D-ATIS <b>128.55</b>	GREENSBORO APP CON <b>124.35 269.225</b> (250°-049°) <b>126.6 327.075</b> (050°-249°)	GREENSBORO TOWER <b>119.1 290.325</b>	GND CON <b>121.9 348.6</b>	CLNC DEL <b>121.75</b>
-------------------------	---	--	-------------------------------	---------------------------

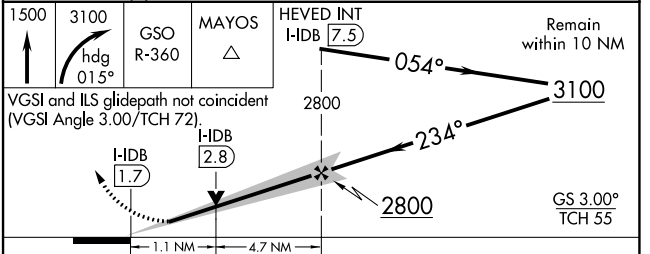


ELEV 926	<b>D</b>	TDZE 864
----------	----------	----------



TDZ/CL Rws 5L, 23R and 23L  
REIL Rwy 32  
HIRL Rws 14-32, 5R-23L and 5L-23R  
FAF to MAP 5.8 NM

Knots	60	90	120	150	180
Min:Sec	5:48	3:52	2:54	2:19	1:56



CATEGORY	A	B	C	D
S-ILS 23R	1064/18		200 (200-1/2)	
S-LOC 23R	1280/24	416 (400-1/2)	1280/40	416 (400-3/4)
CIRCLING	1440-1	514 (600-1)	1700-2 1/4 774 (800-2/4)	1700-2 1/2 774 (800-2/2)

SE-2, 05 SEP 2024 to 03 OCT 2024

SE-2, 05 SEP 2024 to 03 OCT 2024