

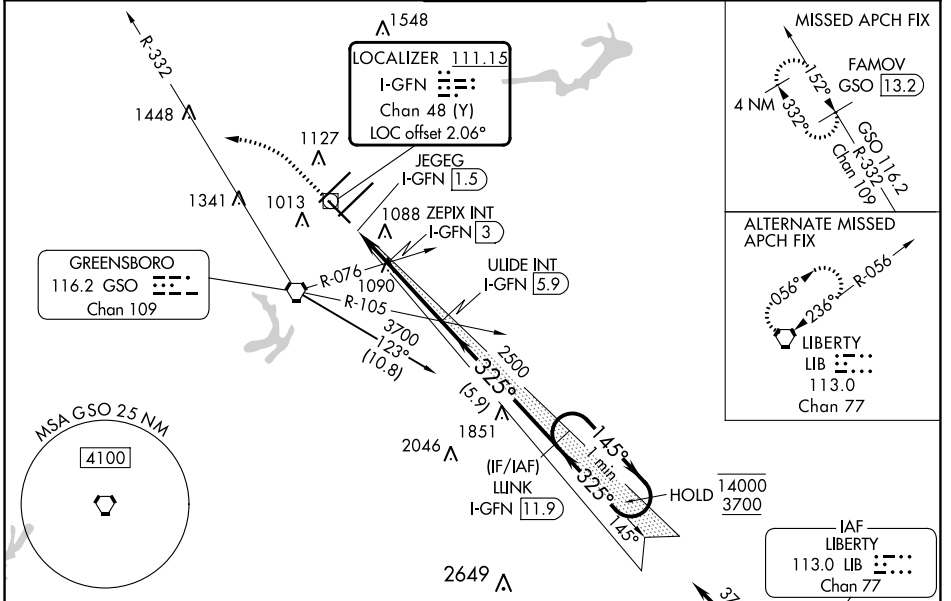
LOC/DME I-GFN <b>111.15</b> Chan 48 (Y)	APP CRS <b>325°</b>	Rwy Idg <b>6380</b> TDZE <b>902</b> Apt Elev <b>926</b>
---	------------------------	---

# ILS Z or LOC Z RWY 32

PIEDMONT TRIAD INTL (GSO)

DME required.		MISSED APPROACH: Climb to 1400 then climbing left turn to 3700 on heading 307° and GSO VORTAC R-332 to FAMOV/GSO 13.2 DME and hold.	
Rwy 32 helicopter visibility reduction below 3/4 SM NA.			

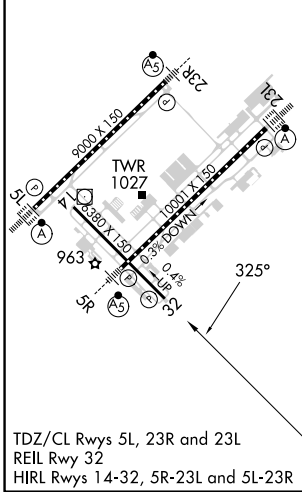
D-ATIS <b>128.55</b>	GREENSBORO APP CON <b>124.35 269.225</b> (250°-049°) <b>126.6 327.075</b> (050°-249°)	GREENSBORO TOWER <b>119.1 290.325</b>	GND CON <b>121.9 348.6</b>	CLNC DEL <b>121.75</b>
-------------------------	---	--	-------------------------------	---------------------------



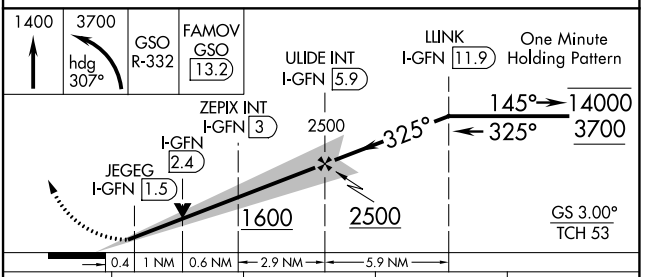
SE-2, 05 SEP 2024 to 03 OCT 2024

SE-2, 05 SEP 2024 to 03 OCT 2024

ELEV 926	<b>D</b> TDZE 902
----------	-------------------



TDZ/CL Rws 5L, 23R and 23L  
REIL Rwy 32  
HIRL Rws 14-32, 5R-23L and 5L-23R



CATEGORY	A	B	C	D
S-ILS 32	1152-3/4 250 (300-3/4)			
S-LOC 32	1400-1	498 (500-1)	1400-1 3/8	498 (500-1 3/8)
<b>C</b> CIRCLING	1440-1	514 (600-1)	1700-2 1/4 774 (800-2 1/4)	1700-2 1/2 774 (800-2 1/2)