

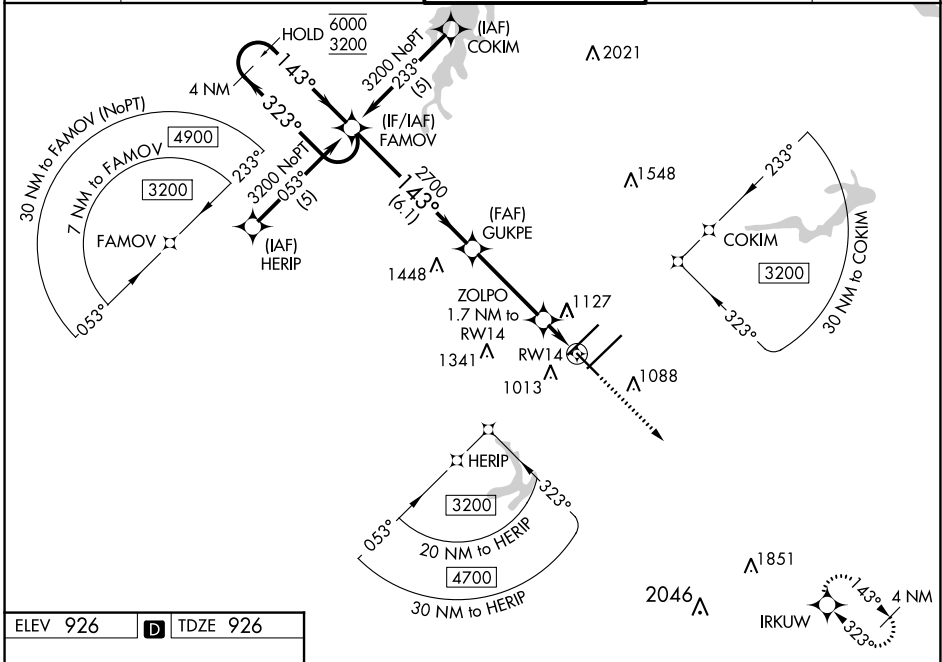
WAAS CH <b>93919</b> <b>W14A</b>	APP CRS <b>143°</b>	Rwy Idg TDZE Apt Elev	<b>6380</b> <b>926</b> <b>926</b>
--	------------------------	-----------------------------	---

# RNAV (GPS) RWY 14

PIEDMONT TRIAD INTL (GSO)

RNP APCH - GPS.		MISSED APPROACH: Climb to 3700 direct IRKUW and hold, continue climb-in-hold to 3700.		
For uncompensated Baro-VNAV systems, LNAV/VNAV NA below -7°C or above 54°C.				

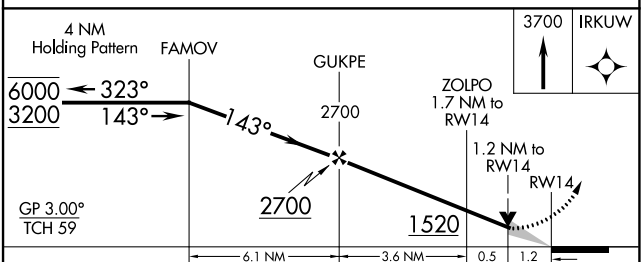
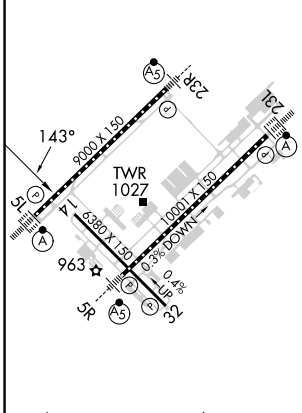
D-ATIS <b>128.55</b>	GREENSBORO APP CON <b>124.35 269.225</b> <b>126.6 327.075</b> (250°-049°) (050°-249°)	GREENSBORO TOWER <b>119.1 290.325</b>	GND CON <b>121.9 348.6</b>	CLNC DEL <b>121.75</b>
-------------------------	--	--	-------------------------------	---------------------------



SE-2, 05 SEP 2024 to 03 OCT 2024

SE-2, 05 SEP 2024 to 03 OCT 2024

ELEV 926	<b>D</b>	TDZE 926
----------	----------	----------



CATEGORY	A	B	C	D
LPV DA		1126- <sup>3</sup> / <sub>4</sub>	200 (200- <sup>3</sup> / <sub>4</sub> )	
LNAV/VNAV DA		1424-1 <sup>3</sup> / <sub>8</sub>	498 (500-1 <sup>3</sup> / <sub>8</sub> )	
LNAV MDA	1360-1	434 (500-1)	1360-1 <sup>1</sup> / <sub>4</sub>	434 (500-1 <sup>1</sup> / <sub>4</sub> )
<b>C</b> CIRCLING	1440-1	514 (600-1)	1700-2 <sup>1</sup> / <sub>4</sub> 774 (800-2 <sup>1</sup> / <sub>4</sub> )	1700-2 <sup>1</sup> / <sub>2</sub> 774 (800-2 <sup>1</sup> / <sub>2</sub> )

TDZ/CL Rwy 5L, 23R and 23L  
REIL Rwy 32  
HIRL All Rwy