

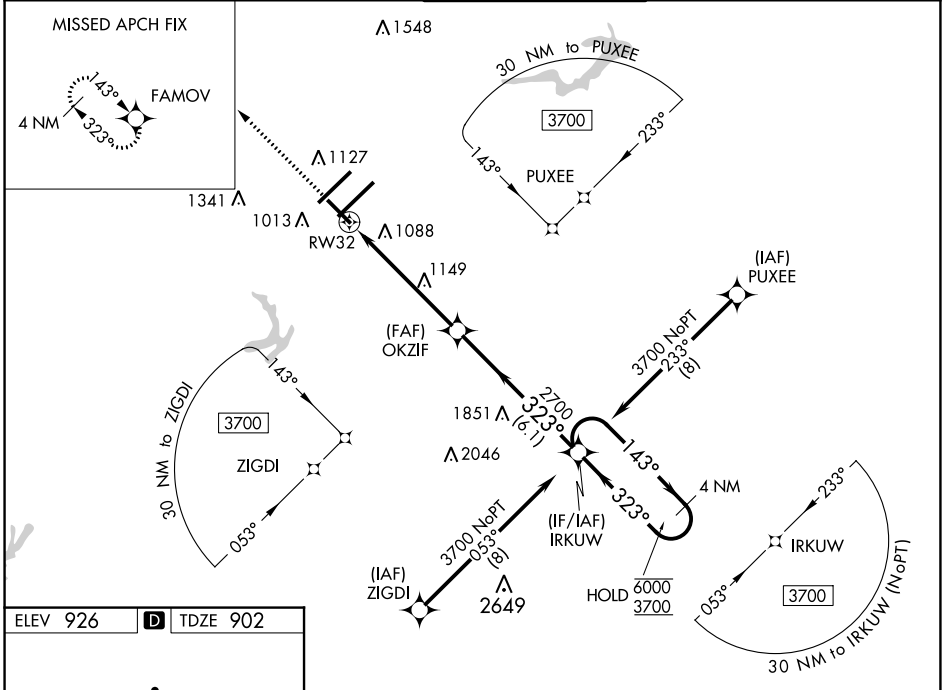
WAAS CH <b>61035</b> <b>W32A</b>	APP CRS <b>323°</b>	Rwy Idg <b>6380</b> TDZE <b>902</b> Apt Elev <b>926</b>
--	------------------------	---

# RNAV (GPS) RWY 32

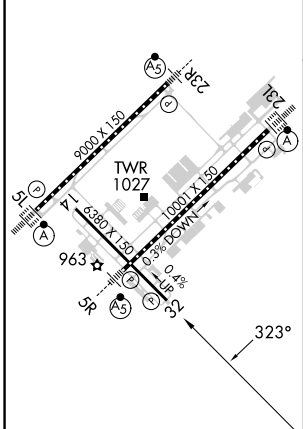
PIEDMONT TRIAD INTL (GSO)

RNP APCH - GPS.		MISSED APPROACH: Climb to 4100 direct FAMOV and hold, continue climb-in-hold to 4100.	
<p><b>⚠</b> For uncompensated Baro-VNAV systems, LNAV/VNAV NA below -7°C or above 54°C. Rwy 32 helicopter visibility reduction below 3/4 SM NA.</p>			

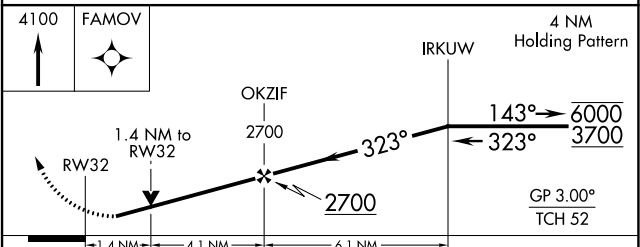
D-ATIS <b>128.55</b>	GREENSBORO APP CON <b>124.35 269.225</b> <b>126.6 327.075</b> (050°-249°)	GREENSBORO TOWER <b>119.1 290.325</b>	GND CON <b>121.9 348.6</b>	CLNC DEL <b>121.75</b>
-------------------------	---	--	-------------------------------	---------------------------



ELEV 926	<b>D</b> TDZE 902
----------	-------------------



TDZ/CL Rws 5L, 23R and 23L  
REIL Rwy 32  
HIRL All Rws



CATEGORY	A	B	C	D
LPV DA		1102-3/4	200 (200-3/4)	
LNAV/VNAV DA		1419-1 3/8	517 (500-1 3/8)	
LNAV MDA	1400-1	498 (500-1)	1400-1 3/8	498 (500-1 3/8)
<b>C</b> CIRCLING	1440-1	514 (600-1)	1700-2 1/4 774 (800-2 1/4)	1700-2 1/2 774 (800-2 1/2)

SE-2, 05 SEP 2024 to 03 OCT 2024

SE-2, 05 SEP 2024 to 03 OCT 2024