

(BIMMR3.BIMMR) 22139

AL-179 (FAA)

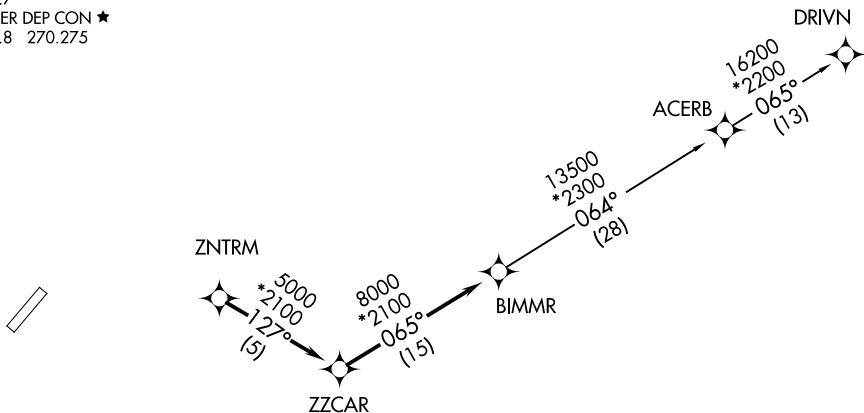
BIMMR THREE DEPARTURE (RNAV)

DONALDSON FLD (GYH)
GREENVILLE, SOUTH CAROLINA

AWOS-3
127.325
CLNC DEL
121.4
GND CON
121.4
DONALDSON TOWER ★
133.325 269.25
UNICOM
122.7
GREER DEP CON ★
118.8 270.275

RNAV 1 - DME/DME/IRU or GPS.
RADAR required.

TOP ALTITUDE:
3000



TAKEOFF MINIMUMS

Rwy 23: Standard.

Rwy 5: 300-1¾ or standard with minimum climb of 223' per NM to 1300, or alternatively, with standard takeoff minimums and a normal 200' per NM climb gradient, takeoff must occur no later than 1900' prior to DER.

NOTE: Do not exceed 250K until advised by ATC.

NOTE: For turbojets only.

NOTE: Chart not to scale.



DEPARTURE ROUTE DESCRIPTION

TAKEOFF RUNWAYS 5, 23: Climb on assigned heading for RADAR vectors to ZNTRM, thence. . . .

. . . .on depicted route to BIMMR. Then on assigned transition. Maintain 3000. Expect clearance to filed altitude within 10 minutes after departure.

ACERB TRANSITION (BIMMR3.ACERB)

DRIVN TRANSITION (BIMMR3.DRIVN)

BIMMR THREE DEPARTURE (RNAV)

(BIMMR3.BIMMR) 19MAY22

GREENVILLE, SOUTH CAROLINA
DONALDSON FLD (GYH)

SE-2, 05 SEP 2024 to 03 OCT 2024

SE-2, 05 SEP 2024 to 03 OCT 2024