

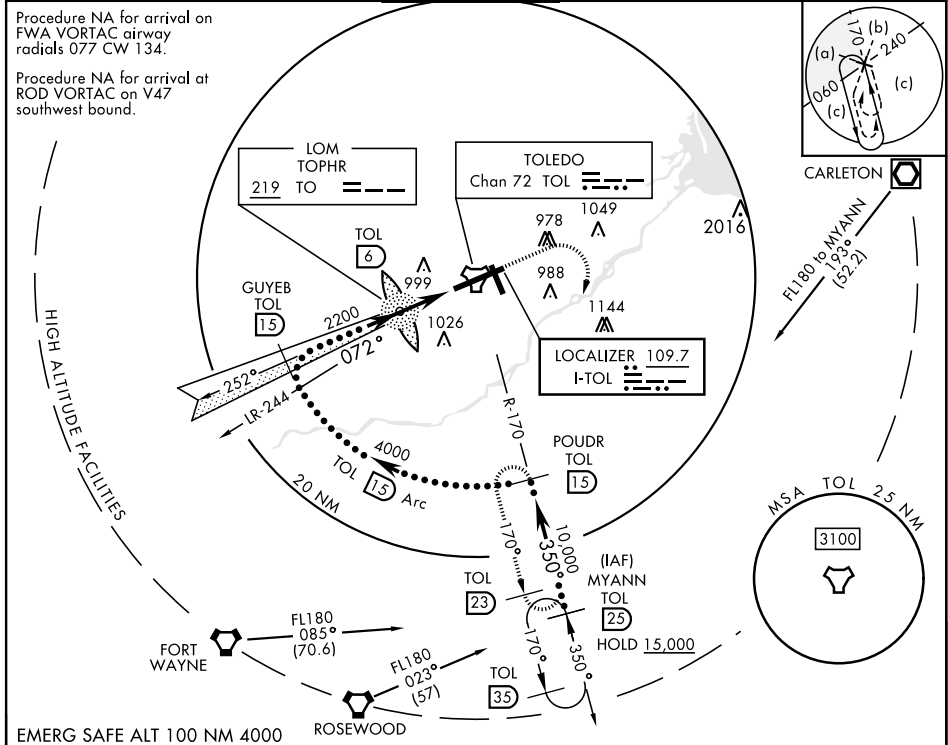
TOLEDO, OHIO

# HI-ILS Y or LOC Y RWY 7

LOC I-TOL <b>109.7</b>	APCH CRS <b>072°</b>	Rwy ldg <b>10,599</b> TDZE <b>683</b> Arpt Elev <b>684</b>	[USAF]	EUGENE F KRANZ TOLEDO EXPRESS (KTOL)
---------------------------	-------------------------	--	--------	--------------------------------------

DME required	ALSF-2	MISSED APPROACH: Climb to 2500, then climbing right turn to 3000 on TOL TACAN R-170 to POUDR/ 15 DME and hold.
--------------	--------	--

ATIS <b>118.75 290.225</b>	TOLEDO APP CON <b>126.1 317.55</b>	TOLEDO TOWER <b>118.1 285.4</b>	GND CON <b>121.9 348.6</b>	CLNC DEL <b>121.75 348.6</b>	ASR
-------------------------------	---------------------------------------	------------------------------------	-------------------------------	---------------------------------	-----



EMERG SAFE ALT 100 NM 4000	2500	3000	POUDR	ELEV 684	TDZE 683
CATEGORY	C	D	E		
S-ILS 7 *	883/18	200 (200-¾)			
S-LOC 7 **	1080/35	397 (400-¾)			
CIRCLING	1300-1¾ 617 (700-1¾)	1400-2¼ 717 (800-2¼)	1400-2½ 717 (800-2½)	HIRL Rwy 7-25 MIRL Rwy 16-34 REIL Rwy 16, 34 TDZL/CL Rwy 7	

TOLEDO, OHIO 41° 35' N-83° 48' W EUGENE F KRANZ TOLEDO EXPRESS (KTOL)

# HI-ILS Y or LOC Y RWY 7

EC-2, 05 SEP 2024 to 03 OCT 2024

EC-2, 05 SEP 2024 to 03 OCT 2024

