

# HI-TACAN RWY 7

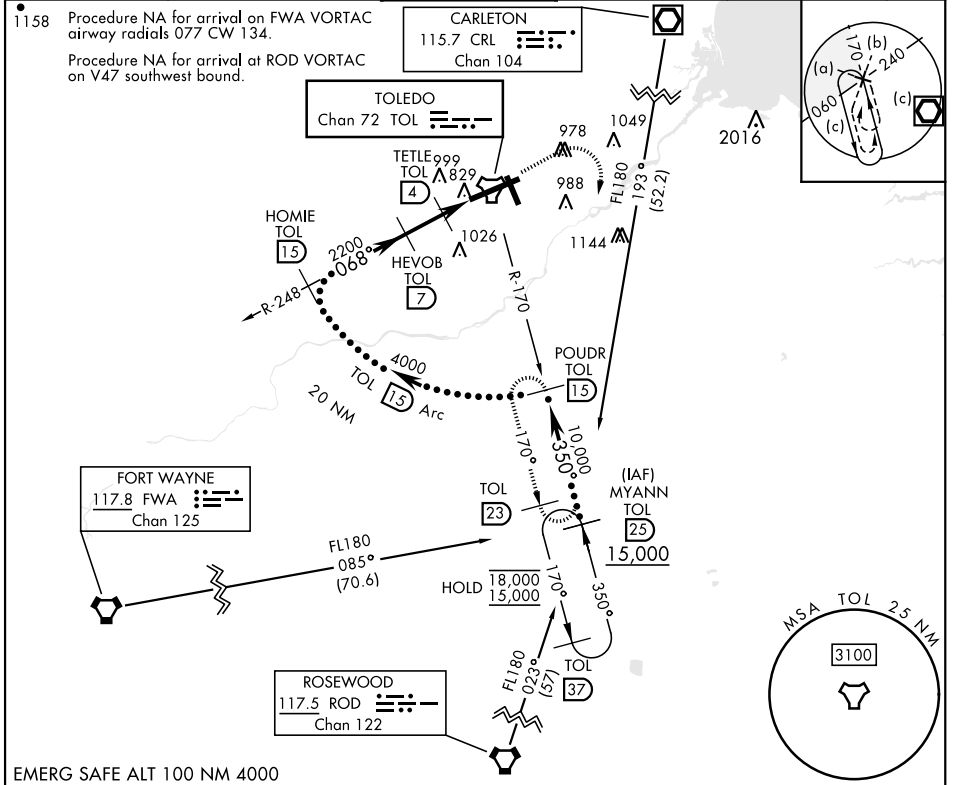
TACAN TOL Chan <b>72</b>	APCH CRS <b>068°</b>	Rwy ldg <b>10,599</b> TDZE <b>683</b> Arprt Elev <b>684</b>
-----------------------------	-------------------------	---

[USAF]

EUGENE F KRANZ TOLEDO EXPRESS (KTOL)

<b>V</b> * When ALS inop increase CAT E vis to 1 $\frac{1}{2}$ mile.	ALS-F-2 	MISSED APPROACH: Climb to 3000 then right turn on TOL TACAN R-170 to POWDR/15 DME and hold.
--	-------------	---

ATIS <b>118.75 290.225</b>	TOLEDO APP CON <b>126.1 317.55</b>	TOLEDO TOWER <b>118.1 285.4</b>	GND CON <b>121.9 348.6</b>	CLNC DEL <b>121.75 348.6</b>	ASR
-------------------------------	---------------------------------------	------------------------------------	-------------------------------	---------------------------------	-----



EMERG SAFE ALT 100 NM 4000

<p>MYANN R-170 (25) 15,000</p> <p>POWDR R-170 (15) 10,000</p> <p>HOMIE R-248 (15) 4000</p> <p>HEVOB (7) 2200</p> <p>TETLE (4) 1240</p> <p>TACAN (2.2) (1.6)</p>	<p>3000</p> <p>TOL R-170</p> <p>POWDR TOL (15)</p>	<p>ELEV 684</p> <p>TDZE 683</p> <p>794 TWR 750 91</p> <p>769 ±</p> <p>599, 778</p> <p>10,600 x 150</p> <p>34</p> <p>726 ±</p> <p>775 ±</p>	
CATEGORY	C	D	E
S-7 *	1140/45	457 (500-7%)	
<b>C</b> CIRCLING	1360-2 677 (700-2)	1400-2 1/4 717 (800-2 1/4)	1400-2 1/2 717 (800-2 1/2)
<p>HIRL Rwy 7-25</p> <p>MIRL Rwy 16-34</p> <p>REIL Rwy 16, 34</p> <p>TDZL/CL Rwy 7</p> <p>Rwy 7 ldg 10,599'</p> <p>Rwy 25 ldg 10,599'</p>			

# HI-TACAN RWY 7

EC-2, 05 SEP 2024 to 03 OCT 2024

EC-2, 05 SEP 2024 to 03 OCT 2024