

WAAS CH 56416 W34A	APP CRS 339°	Rwy Idg TDZE 322 Apt Elev 341	5387
--	------------------------	---	-------------

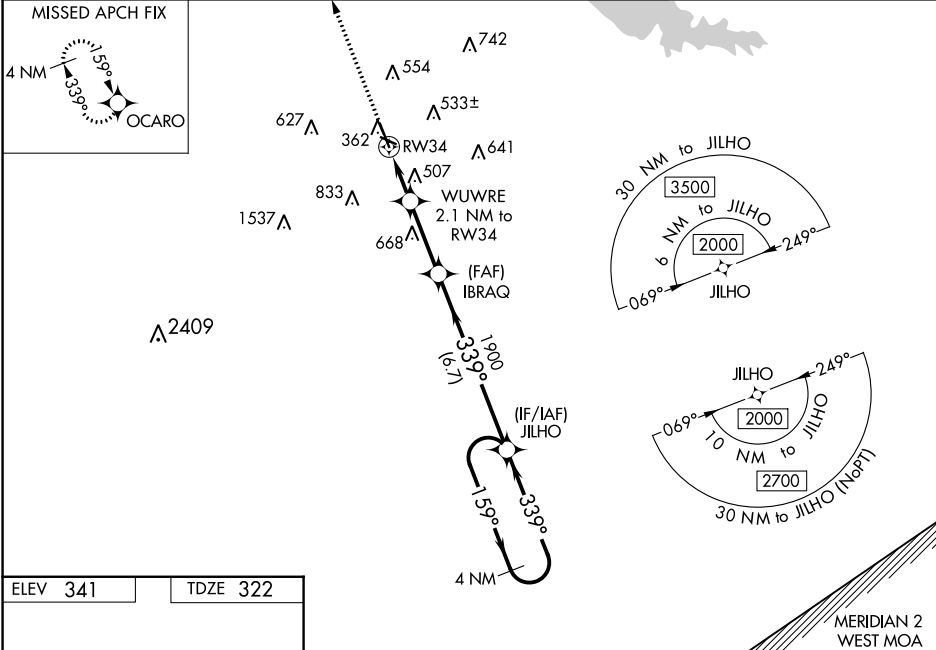
RNAV (GPS) RWY 34

HAWKINS FLD (HKS)

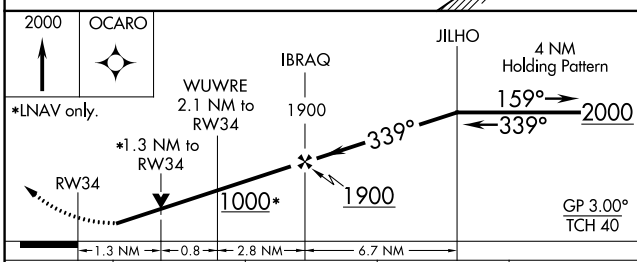
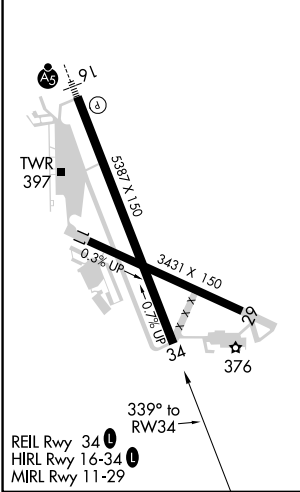
⚠ For uncompensated Baro-VNAV systems, LNAV/VNAV NA below -6°C (22°F) or above 54°C (130°F). DME/DME RNP-0.3 NA. Baro-VNAV and VDP NA when using Jackson-Medgar Wiley Evers Intl altimeter setting. When local altimeter setting not received, use Jackson-Medgar Wiley Evers Intl altimeter setting and increase all DA 19 feet and all MDA 20 feet. Increase LPV and LNAV/VNAV all Cats visibility 1/8 mile and Circling Cat C visibility 1/4 mile. Rwy 34 helicopter visibility reduction below 3/4 SM NA.

MISSED APPROACH:
Climb to 2000 direct OCARO and hold.

ASOS 120.625	JACKSON APP CON * 123.9 319.2	HAWKINS TOWER * 119.65 (CTAF) 257.8	GND CON 121.9 239.0	CLNC DEL 121.9 (When twr closed)	UNICOM 122.95
------------------------	---	---	-------------------------------	---	-------------------------



ELEV 341	TDZE 322
-----------------	-----------------



CATEGORY	A	B	C	D
LPV DA		588-7/8	266 (300-7/8)	
LNAV/VNAV DA		670-1 1/8	348 (400-1 1/8)	
LNAV MDA	760-1	438 (500-1)	760-1 3/8	438 (500-1 3/8)
C CIRCLING	860-1 519 (600-1)	880-1 539 (600-1)	1140-2 1/4 799 (800-2 1/4)	1320-3 979 (1000-3)

SC-4, 05 SEP 2024 to 03 OCT 2024

SC-4, 05 SEP 2024 to 03 OCT 2024