

(HURCN4.HURCN) 24081

AL-256 (FAA)

MIAMI-OPA LOCKA EXEC (OPF)

# HURCN FOUR DEPARTURE (RNAV)

MIAMI, FLORIDA

RNAV-1 DME/DME/IRU or GPS.

RADAR required.

**TOP ALTITUDE:  
ASSIGNED BY ATC**

MIAMI DEP CON  
119.45 290.325  
ATIS  
125.9  
CLNC DEL  
119.2  
GND CON  
120.025  
OPA LOCKA TOWER★  
134.675 (CTAF)

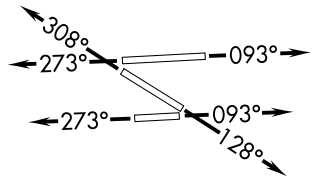
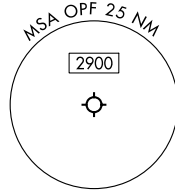
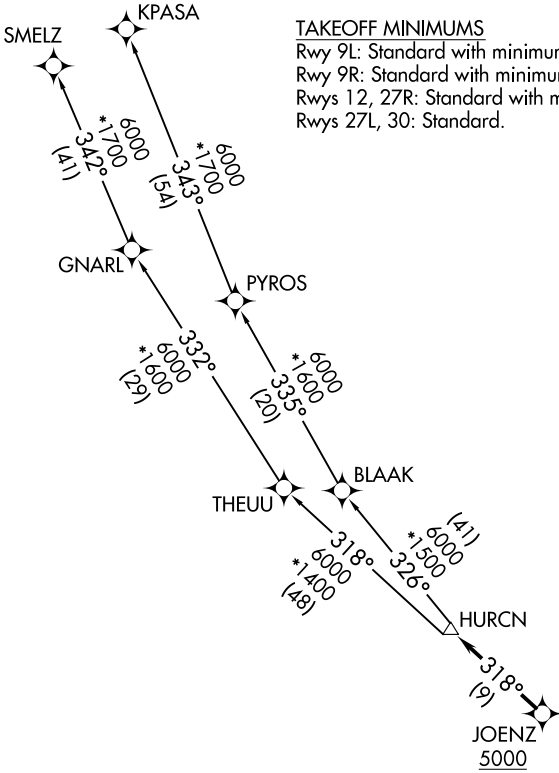
### TAKEOFF MINIMUMS

Rwy 9L: Standard with minimum climb of 500'/NM to 1000.

Rwy 9R: Standard with minimum climb of 500'/NM to 700.

Rwys 12, 27R: Standard with minimum climb of 500'/NM to 600.

Rwys 27L, 30: Standard.



NOTE: Jet aircraft only.  
 NOTE: Accelerate to 250K until leaving 10000,  
 if unable, advise ATC.

SE-3, 05 SEP 2024 to 03 OCT 2024

SE-3, 05 SEP 2024 to 03 OCT 2024

NOTE: Chart not to scale.

(CONTINUED ON FOLLOWING PAGE)

# HURCN FOUR DEPARTURE (RNAV)

(HURCN4.HURCN) 21MAR24

MIAMI, FLORIDA

MIAMI-OPA LOCKA EXEC (OPF)

# HURCN FOUR DEPARTURE (RNAV)



## DEPARTURE ROUTE DESCRIPTION

TAKEOFF RUNWAYS 9L/R: Climb on heading 093° or as assigned by ATC for RADAR vectors to cross JOENZ at or above 5000, thence. . .

TAKEOFF RUNWAY 12: Climb on heading 128° or as assigned by ATC for RADAR vectors to cross JOENZ at or above 5000, thence. . .

TAKEOFF RUNWAYS 27L/R: Climb on heading 273° or as assigned by ATC for RADAR vectors to cross JOENZ at or above 5000, thence. . .

TAKEOFF RUNWAY 30: Climb on heading 308° or as assigned by ATC for RADAR vectors to cross JOENZ at or above 5000, thence. . .

. . .on track 318° to HURCN, then on transition. Maintain ATC assigned altitude. Expect clearance to filed altitude within 10 minutes after departure.

KPASA TRANSITION (HURCN4.KPASA)

SMELZ TRANSITION (HURCN4.SMELZ)

SE-3, 05 SEP 2024 to 03 OCT 2024

SE-3, 05 SEP 2024 to 03 OCT 2024