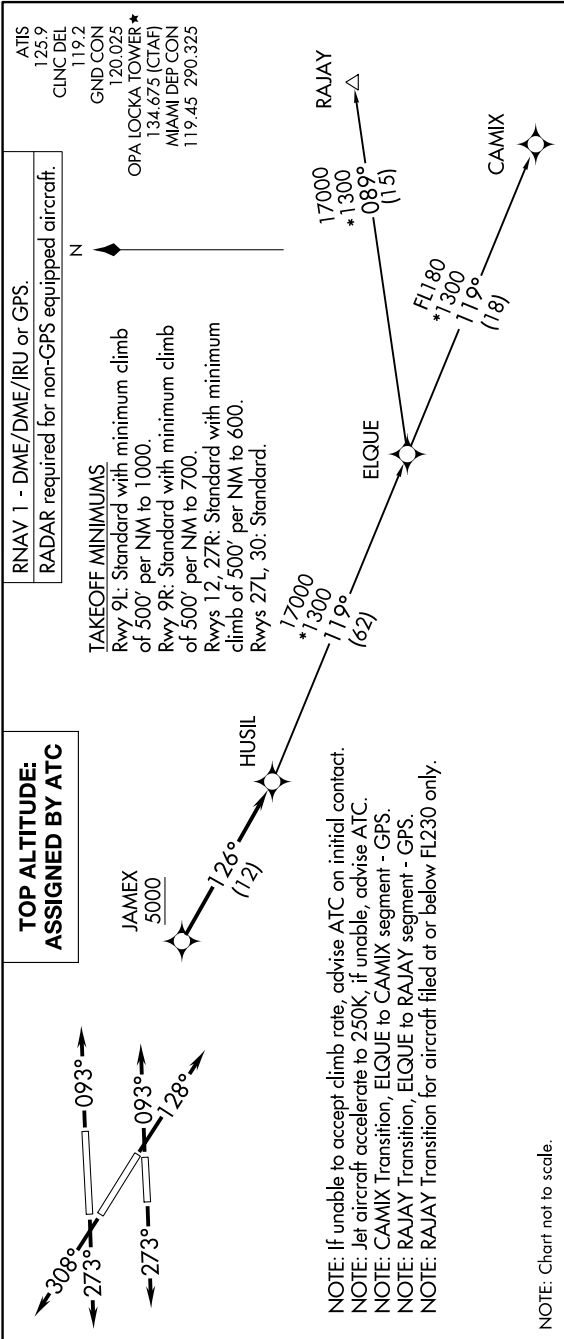


HUSIL THREE DEPARTURE(RNAV)

SE-3, 05 SEP 2024 to 03 OCT 2024



NOTE: Chart not to scale.

DEPARTURE ROUTE DESCRIPTION

- TAKEOFF RUNWAYS 9L/R:** Climb on heading 093° or as assigned by ATC for RADAR vectors to cross JAMEX at or above 5000, thence...
 - TAKEOFF RUNWAY 12:** Climb on heading 128° or as assigned by ATC for RADAR vectors to cross JAMEX at or above 5000, thence...
 - TAKEOFF RUNWAYS 27L/R:** Climb on heading 273° or as assigned by ATC for RADAR vectors to cross JAMEX at or above 5000, thence...
 - TAKEOFF RUNWAY 30:** Climb on heading 308° or as assigned by ATC for RADAR vectors to cross JAMEX at or above 5000, thence... on track 126° to HUSIL. Then on assigned transition. Maintain ATC assigned altitude, expect clearance to filed altitude within 10 minutes after departure.
- CAMIX TRANSITION (HUSIL3.CAMIX)**
RAJAY TRANSITION (HUSIL3.RAJAY)

SE-3, 05 SEP 2024 to 03 OCT 2024