

(LIFRR2.LIFRR) 24081

AL-256 (FAA)

MIAMI-OPA LOCKA EXEC (OPF')  
MIAMI, FLORIDA

# LIFRR TWO DEPARTURE (RNAV)

RNAV 1 - DME/DME/IRU or GPS.  
RADAR required for non-GPS  
equipped aircraft.

BAIRN

WIXED

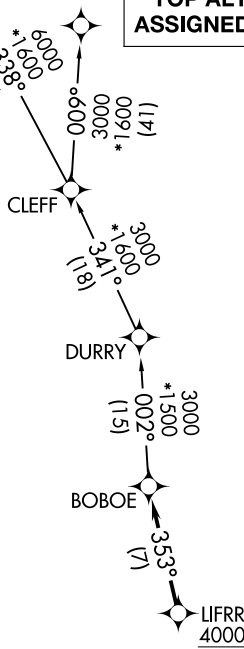
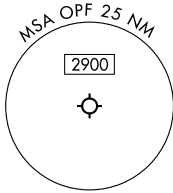
**TOP ALTITUDE:  
ASSIGNED BY ATC**

MIAMI DEP CON  
119.45 290.325  
ATIS  
125.9  
CLNC DEL  
119.2  
GND CON  
120.025  
OPA LOCKA TOWER\*  
134.675 (CTAF)

NOTE: Accelerate to 250K until leaving 10000,  
if unable, advise ATC.

NOTE: Jet aircraft only.

NOTE: For aircraft filed at or below 12000.



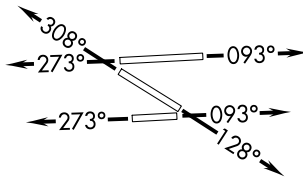
### TAKEOFF MINIMUMS

Rwy 9L: Standard with minimum climb of 500'/  
NM to 1000.

Rwy 9R: Standard with minimum climb of 500'/  
NM to 700.

Rwys 12, 27R: Standard with minimum climb  
of 500'/NM to 600.

Rwys 27L, 30: Standard.



NOTE: Chart not to scale.



### DEPARTURE ROUTE DESCRIPTION

TAKEOFF RUNWAYS 9L/R: Climb on heading 093° or as assigned by ATC, thence. . .

TAKEOFF RUNWAY 12: Climb on heading 128° or as assigned by ATC, thence. . .

TAKEOFF RUNWAYS 27L/R: Climb on heading 273° or as assigned by ATC, thence. . .

TAKEOFF RUNWAY 30: Climb on heading 308° or as assigned by ATC, thence. . .

. . .for RADAR vector to cross LIFRR at or above 4000, then on track 353° to BOBOE, then on assigned transition, maintain ATC assigned altitude, expect clearance to filed altitude within 10 minutes after departure.

BAIRN TRANSITION (LIFRR2.BAIRN)

WIXED TRANSITION (LIFRR2.WIXED)

# LIFRR TWO DEPARTURE (RNAV)

(LIFRR2.LIFRR) 21MAR24

MIAMI, FLORIDA  
MIAMI-OPA LOCKA EXEC (OPF')

SE-3, 05 SEP 2024 to 03 OCT 2024

SE-3, 05 SEP 2024 to 03 OCT 2024