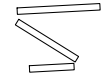


MIAMI DEP CON  
119.45 290.325  
ATIS  
125.9  
CLNC DEL  
119.2  
GND CON  
120.025  
OPA LOCKA TOWER ★  
134.675 (CTAF)

RNAV1 - DME/DME/IRU or GPS.  
From SLIPT to MAXIM: RNAV 1 - GPS.  
From SLIPT to CANOA: RNAV 1 - GPS.  
RADAR required.

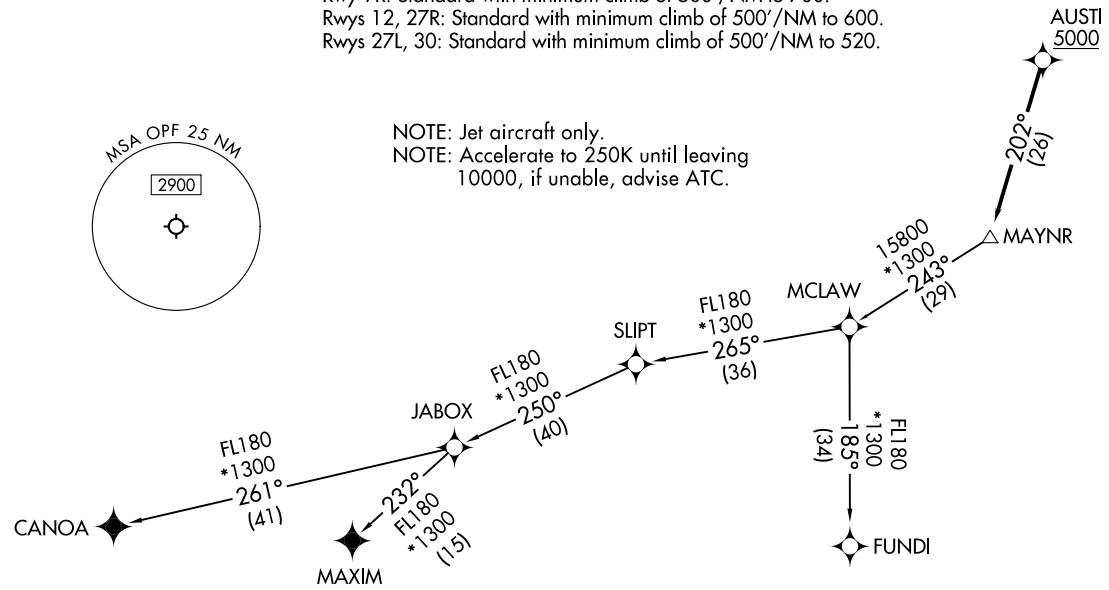
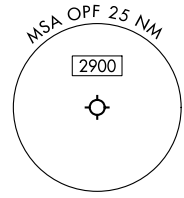
**TOP ALTITUDE:  
ASSIGNED BY ATC**



**TAKEOFF MINIMUMS**

Rwy 9L: Standard with minimum climb of 500'/NM to 1000.  
Rwy 9R: Standard with minimum climb of 500'/NM to 700.  
Rwys 12, 27R: Standard with minimum climb of 500'/NM to 600.  
Rwys 27L, 30: Standard with minimum climb of 500'/NM to 520.

NOTE: Jet aircraft only.  
NOTE: Accelerate to 250K until leaving  
10000, if unable, advise ATC.



NOTE: Chart not to scale.

(CONTINUED ON FOLLOWING PAGE)

MAYNR TWO DEPARTURE(RNAV)  
(MAYNR2.MAYNR) 21MAR24

MIAMI-OPA LOCKA EXEC (OPF)  
MIAMI, FLORIDA

(MAYNR2.MAYNR) 24081  
MAYNR TWO DEPARTURE(RNAV)

MIAMI-OPA LOCKA EXEC (OPF)  
MIAMI, FLORIDA

AL-256 (FAA)

# MAYNR TWO DEPARTURE (RNAV)



## DEPARTURE ROUTE DESCRIPTION

TAKEOFF RUNWAYS 9L/9R, 12, 27L/R, 30: Climb on heading assigned by ATC for vectors to cross AUSTI at or above 5000, thence. . . .

. . . .on track 202° to MAYNR, then on assigned transition, maintain ATC assigned altitude. Expect clearance to filed altitude within 10 minutes after departure.

CANOA TRANSITION (MAYNR2.CANOA)

FUNDI TRANSITION (MAYNR2.FUNDI)

MAXIM TRANSITION (MAYNR2.MAXIM)

SE-3, 05 SEP 2024 to 03 OCT 2024

SE-3, 05 SEP 2024 to 03 OCT 2024