

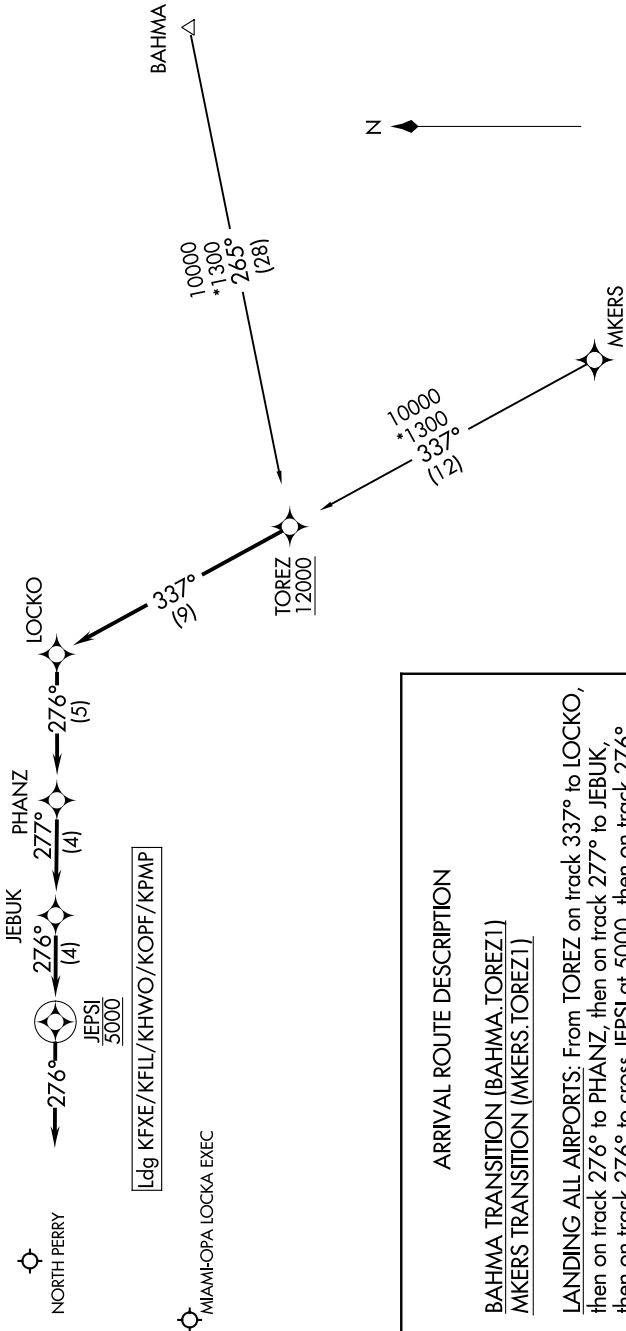
TOREZ ONE ARRIVAL (RNAV)

MIAMI, FLORIDA

SE-3, 05 SEP 2024 to 03 OCT 2024

MIAMI APP CON 119.45 290.325	RNAV 1-GPS.
FLL D-ATIS 135.0	RADAR required.
FXE ATIS 119.85	
HWO ATIS 135.475	
OPF ATIS 125.9	
PMP ATIS 120.55	

NOTE: Turboprop and prop aircraft only.
 NOTE: Do not file - to be assigned by ATC.



ARRIVAL ROUTE DESCRIPTION

BAHMA TRANSITION (BAHMA.TOREZ1)
MKERS TRANSITION (MKERS.TOREZ1)

LANDING ALL AIRPORTS: From TOREZ on track 337° to LOCKO, then on track 276° to PHANZ, then on track 277° to JEBUK, then on track 276° to cross JEPSI at 5000, then on track 276°. Expect RADAR vectors to final approach course.

NOTE: Chart not to scale.

SE-3, 05 SEP 2024 to 03 OCT 2024