

WAAS CH 61123 W09A	APP CRS 090°	Rwy Idg TDZE Apt Elev	10002 587 590
--	------------------------	-----------------------------	--

RNAV (GPS) RWY 9

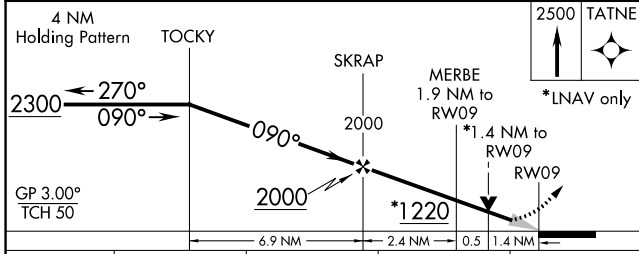
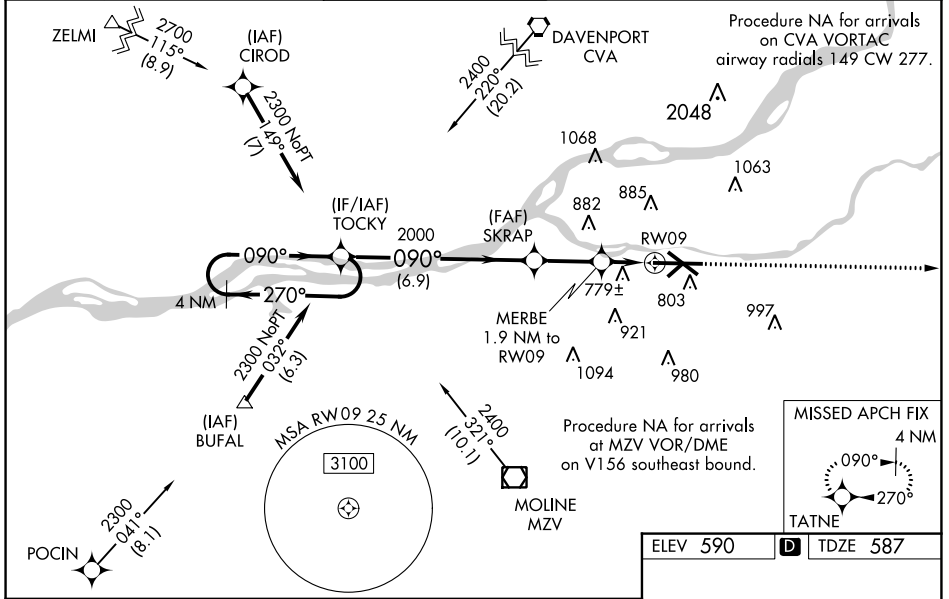
QUAD CITIES INTL (MLI)

⚠ Circling to Rwy 5 NA at night. Baro-VNAV NA when using Davenport altimeter setting. For uncompensated Baro-VNAV systems, LNAV/VNAV NA below -26°C (-14°F) or above 40°C (104°F). DME/DME RNP-0.3 NA. VDP NA when using Davenport altimeter setting. When local altimeter setting not received, use Davenport altimeter setting and increase LPV DA to 825 feet and LNAV/VNAV DA to 1160 feet and LNAV/VNAV visibility all Cats 1/2 SM; increase all MDA 60 feet and LNAV visibility Cats C and D 1/2 SM, Circling Cats C and D 1/2 SM. For inoperative ALS, increase LNAV visibility Cats C and D to 1 1/2 SM. When using Davenport altimeter increase LNAV/VNAV visibility all Cats to 2 SM, LNAV visibility Cats C and D to 1 1/2 SM.
**** RVR 1800 authorized with use of FD or AP or HUD to DA.**

MALSRS

MISSED APPROACH:
Climb to 2500 direct TATNE and hold.

ATIS 121.2	QUAD CITY APP CON * 125.95 257.8	QUAD CITY TOWER * 119.4 (CTAF) 0 269.55	GND CON 121.9	CLNC DEL 124.05	UNICOM 122.95
----------------------	--	---	-------------------------	---------------------------	-------------------------



ELEV 590 **D** TDZE 587

TWR 684

CATEGORY	A	B	C	D
LPV DA**	787/24		200 (200-1/2)	
LNAV/VNAV DA	1122-1 3/8		535 (600-1 3/8)	
LNAV MDA	1060/24	473 (500-1/2)	1060/50	473 (500-1)
CIRCLING	1140-1 550 (600-1)	1200-1 610 (700-1)	1320-2 730 (800-2)	1420-2 3/4 830 (900-2 3/4)

MIRL Rwy 5-23
 REIL Rws 13 and 31
 HIRL Rws 9-27 and 13-31

EC-3, 05 SEP 2024 to 03 OCT 2024

EC-3, 05 SEP 2024 to 03 OCT 2024