

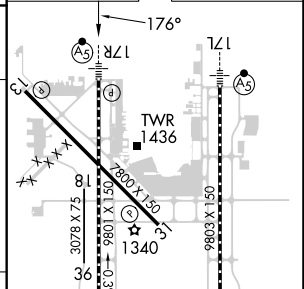
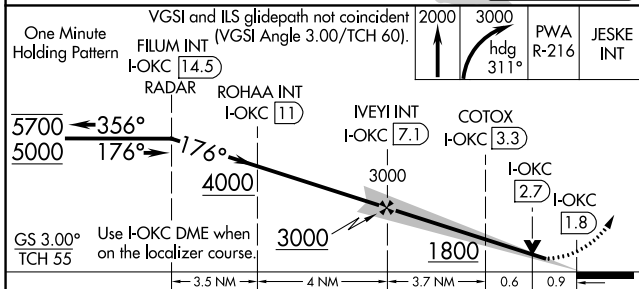
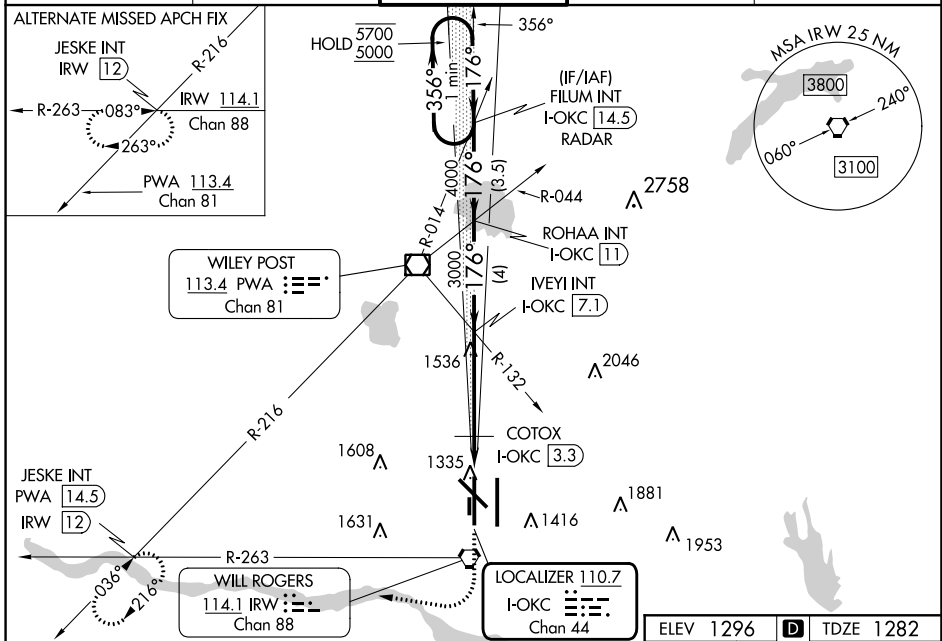
LOC/DME I-OKC <b>110.7</b> Chan 44	APP CRS <b>176°</b>	Rwy Ldg TDZE Apt Elev	<b>9800</b> <b>1282</b> <b>1296</b>
--	------------------------	-----------------------------	---

# ILS or LOC RWY 17R

WILL ROGERS WORLD (OKC)

<p>RADAR required for procedure entry.</p> <p>Simultaneous approach authorized. For inop ALS, increase S-ILS 17R Cat E visibility to RVR 4000; increase S-LOC 17R Cats C, D and E visibilities to 1<math>\frac{3}{8}</math> SM. * RVR 1800 authorized with use of FD or AP or HUD to DA.</p>		<p>MALS/R</p>	<p>MISSED APPROACH: Climb to 2000 then climbing right turn to 3000 on heading 311° and on PWA VOR/DME R-216 to JESKE INT/PWA 14.5 DME and hold.</p>
--	--	---------------	---

D-ATIS <b>125.85</b>	OKE CITY APP CON <b>124.6 266.8</b>	<b>ROGERS TOWER</b> <b>119.35 269.45</b>	GND CON <b>121.9 348.6</b>	CLNC DEL <b>124.35</b>
-------------------------	--	---	-------------------------------	---------------------------



CATEGORY	A	B	C	D	E
S-ILS 17R*	1482/24 200 (200- $\frac{1}{2}$ )				
S-LOC 17R	1800/24	518 (600- $\frac{1}{2}$ )	1800/55		518 (600-1)
CIRCLING	1800-1	504 (600-1)	1960-1 $\frac{3}{4}$ 664 (700-1 $\frac{3}{4}$ )	2000-2 $\frac{1}{4}$ 704 (800-2 $\frac{1}{4}$ )	2240-3 944 (1000-3)
COTOX FIX MINIMUMS					
S-LOC 17R	1620/24	338 (400- $\frac{1}{2}$ )	1620/26	338 (400- $\frac{1}{2}$ )	
CIRCLING	1740-1 444 (500-1)	1760-1 464 (500-1)	1960-1 $\frac{3}{4}$ 664 (700-1 $\frac{3}{4}$ )	2000-2 $\frac{1}{4}$ 704 (800-2 $\frac{1}{4}$ )	2240-3 944 (1000-3)
FAF to MAP 5.2 NM					
Knots		60	90	120	150 180
Min:Sec		5:12	3:28	2:36	2:05 1:44

SC-1, 05 SEP 2024 to 03 OCT 2024

SC-1, 05 SEP 2024 to 03 OCT 2024