


APP CRS	Rwy Idg	<b>9802</b>
<b>176°</b>	TDZE	<b>1287</b>
	Apt Elev	<b>1296</b>

# RNAV (RNP) Z RWY 17L

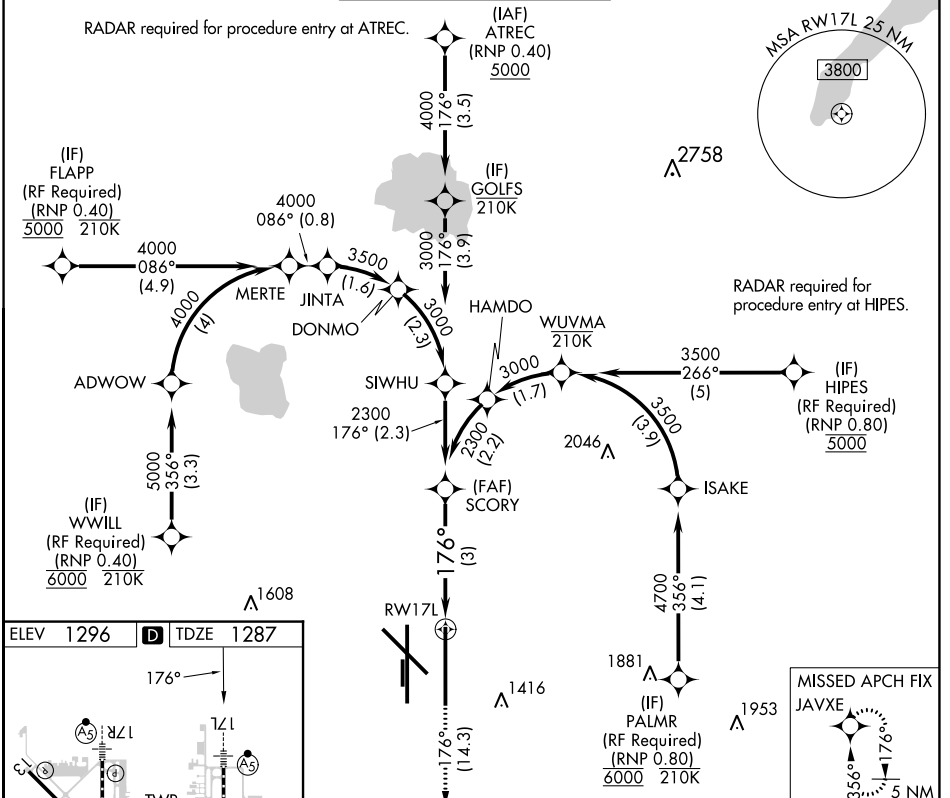
WILL ROGERS WORLD (OKC)

**ASR** For uncompensated Baro-VNAV systems, procedure NA below -12°C (11°F) or above 54°C (130°F). GPS required. Simultaneous approach authorized with Rwy 17R. Use of FD or AP providing RNAV track guidance required during simultaneous operations.

**MALSR** 

**MISSED APPROACH:** Climb to 5000 on track 176° to JAVXE and hold, continue climb-in-hold to 5000.

D-ATIS	OKC CITY APP CON	ROGERS TOWER	GND CON	CLNC DEL
<b>125.85</b>	<b>124.6 266.8</b>	<b>119.35 269.45</b>	<b>121.9 348.6</b>	<b>124.35</b>



SC-1, 05 SEP 2024 to 03 OCT 2024

SC-1, 05 SEP 2024 to 03 OCT 2024

ELEV 1296 TDZE 1287

REIL Rwy 13 and 31  
TDZ/CL Rwy 35R  
MIRL Rwy 13-31  
HIRL Rwy 17L-35R and 17R-35L

5000	JAVXE	See planview for multiple IF locations.	SCOREY	
↑	tr 176°		2300	
RW17L		176°	2300	
		3 NM	GP 3.00° TCH 59	
CATEGORY	A	B	C	D
RNP 0.11 DA		1555/24	268 (300-½)	
RNP 0.20 DA		1643/34	356 (400-¾)	
RNP 0.30 DA		1724/49	437 (500-1)	