

APP CRS	Rwy Idg	9800
176°	TDZE	1282
	Apt Elev	1296

RNAV (RNP) Z RWY 17R

WILL ROGERS WORLD (OKC)

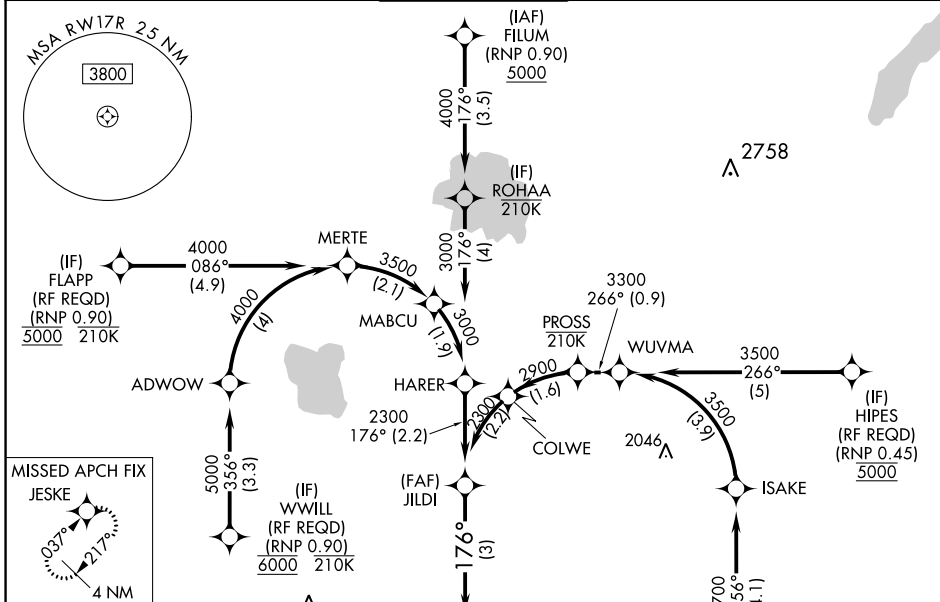
RNP AR APCH.

ASR For uncompensated Baro-VNAV systems, procedure NA below -13°C or above 54°C.
 For inop ALS, increase RNP 0.20 all Cats visibility to RVR 4500 and RNP 0.30 all Cats visibility to RVR 6000. Simultaneous approach authorized. Use of FD or AP required during simultaneous operations.

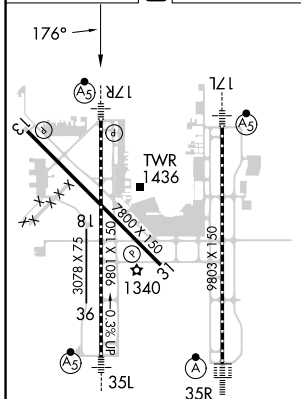


MISSED APPROACH: Climb to 2000 then climbing right turn to 3000 direct JESKE and hold.

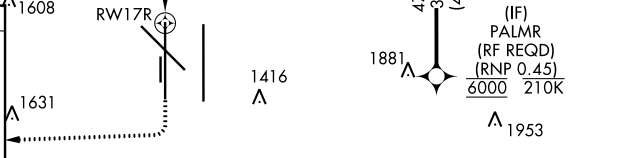
D-ATIS 125.85	OKE CITY APP CON 124.6 266.8	ROGERS TOWER 119.35 269.45	GND CON 121.9 348.6	CLNC DEL 124.35
-------------------------	--	---	-------------------------------	---------------------------



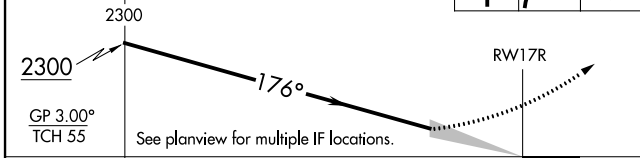
ELEV 1296 **D** TDZE 1282



REIL Rwy 13 and 31
 TDZ/CL Rwy 35R
 MIRL Rwy 13-31
 HIRL Rwy 17L-35R and 17R-35L



VGSI and RNAV glidepath not coincident (VGSI Angle 3.00/TCH 60).
 2000 3000 JESKE



CATEGORY	A	B	C	D
RNP 0.20 DA		1559/24	277 (300-½)	
RNP 0.30 DA		1677/35	395 (400-⅝)	

AUTHORIZATION REQUIRED

SC-1, 05 SEP 2024 to 03 OCT 2024

SC-1, 05 SEP 2024 to 03 OCT 2024