

WAAS CH 50102 W17A	APP CRS 176°	Rwy Idg TDZE Apt Elev	9800 1282 1296
--	------------------------	-----------------------------	---

RNAV (GPS) Y RWY 17R

WILL ROGERS WORLD (OKC)

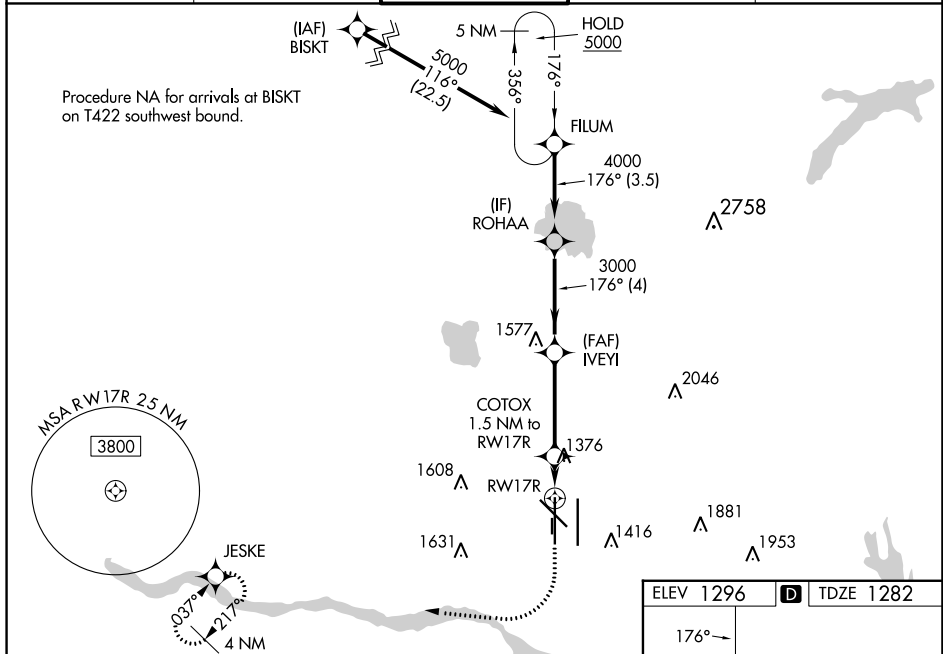
RNP APCH-GPS.

Simultaneous approach authorized. LNAV procedure NA during simultaneous operations. Use of FD or AP required during simultaneous operations. For uncompensated Baro-VNAV systems, LNAV/VNAV NA below -12°C or above 54°C. For inop ALS, increase LNAV/VNAV all Cats visibility to RVR 4500, and LNAV Cats C and D visibility to RVR 5500. * RVR 1800 authorized with use of FD or AP or HUD to DA.

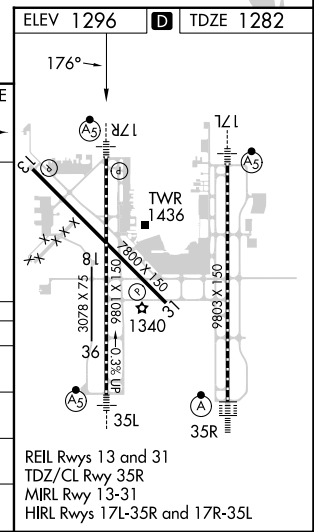
MALSR

MISSED APPROACH: Climb to 2000 then climbing right turn to 3000 direct JESKE and hold.

D-ATIS 125.85	OKE CITY APP CON 124.6 266.8	ROGERS TOWER 119.35 269.45	GND CON 121.9 348.6	CLNC DEL 124.35
-------------------------	--	---	-------------------------------	---------------------------



FILUM VGSI and RNAV glidepath not coincident (VGSI Angle 3.00/TCH 60). GP 3.00° TCH 55	FILUM	ROHAA	IVEYI	COTOX	JESKE
	5000	4000	3000	1800	2000 / 3000
	3.5 NM	4 NM	3.7 NM	0.6 NM	0.9 NM
CATEGORY	A	B	C	D	
LPV DA*		1482/24	200 (200-½)		
LNAV/VNAV DA		1550/24	268 (300-½)		
LNAV MDA	1640/24	358 (400-½)	1640/30	358 (400-¾)	
CIRCLING	1740-1 444 (500-1)	1760-1 464 (500-1)	1960-1¾ 664 (700-1¾)	2000-2¼ 704 (800-2¼)	



SC-1, 05 SEP 2024 to 03 OCT 2024

SC-1, 05 SEP 2024 to 03 OCT 2024