

ALAMO THREE DEPARTURE

**TOP ALTITUDE:
5000**

D-ATIS
118.9
CLNC DEL
126.7
CPDLC
GND CON
121.9 348.6
SAN ANTONIO DEP CON
125.1 307.0 (Rwys 04/22/31)
127.1 269.1 (Rwy 13)
SAN ANTONIO TOWER
119.8 257.8

COWBOY
116.2 CVE
Chan 109

BROWNWOOD
113.55 BWD
Chan 82 (Y)

GOOCH SPRINGS
112.5 AGJ
Chan 72

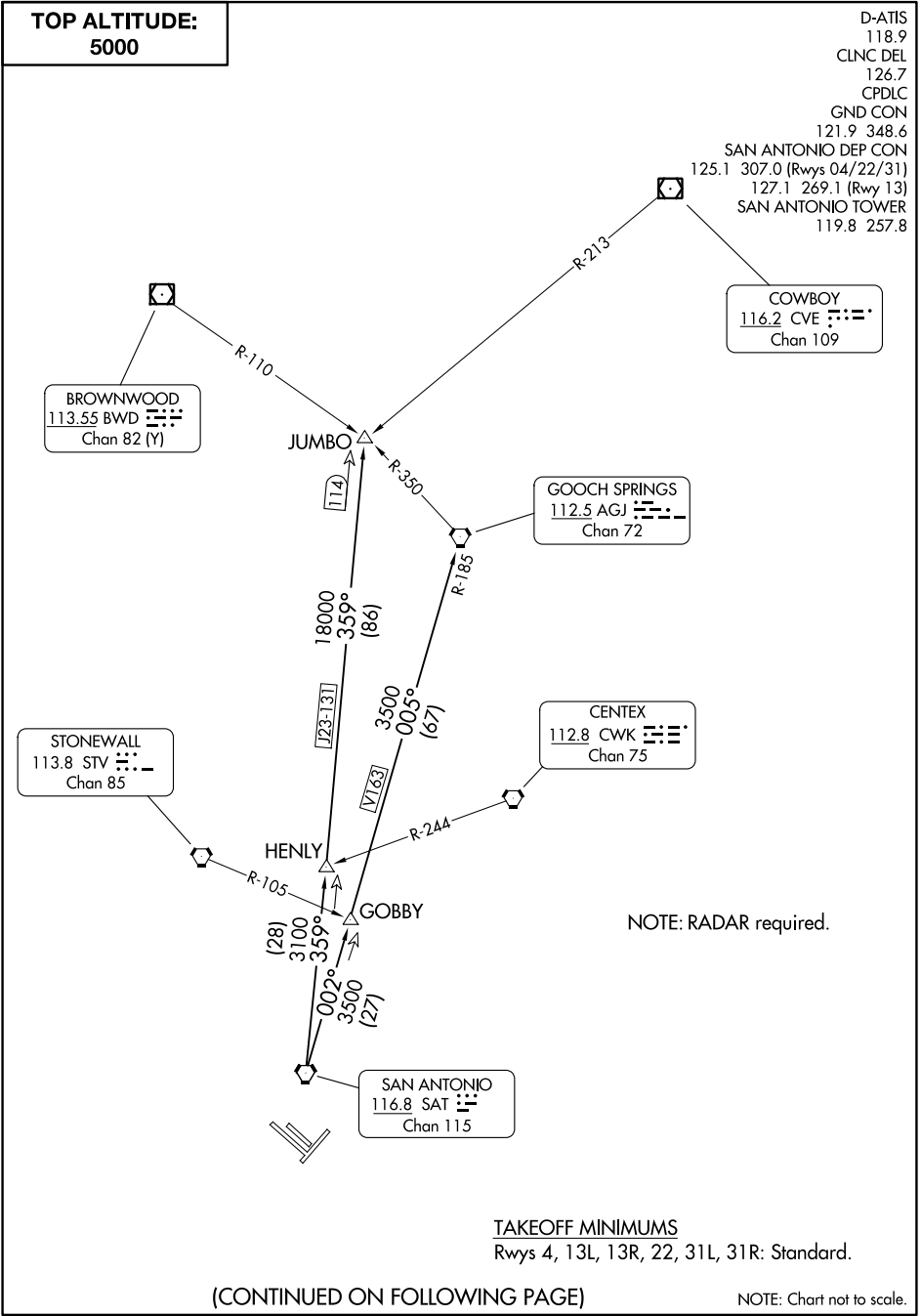
STONEWALL
113.8 STV
Chan 85

CENTEX
112.8 CWK
Chan 75

SAN ANTONIO
116.8 SAT
Chan 115

SC-3, 05 SEP 2024 to 03 OCT 2024

SC-3, 05 SEP 2024 to 03 OCT 2024



(CONTINUED ON FOLLOWING PAGE)

NOTE: Chart not to scale.

ALAMO THREE DEPARTURE

ALAMO THREE DEPARTURE



DEPARTURE ROUTE DESCRIPTION

TAKEOFF RUNWAYS 4, 13L 13R, 22, 31L, 31R: Climb on assigned heading for RADAR vectors to SAT VORTAC. Maintain 5000, thence. . .

. . . on transition/route. Expect filed altitude 10 minutes after departure.

GOBBY TRANSITION (ALAMO3.GOBBY): From over SAT VORTAC on SAT R-002 to GOBBY.

GOOCH SPRINGS TRANSITION (ALAMO3.AGJ): From over SAT VORTAC on SAT R-002 to GOBBY, then on SAT R-002 and AGJ R-185 to AGJ VORTAC.

HENLY TRANSITION (ALAMO3.HENLY): From over SAT VORTAC on SAT R-359 to HENLY.

JUMBO TRANSITION (ALAMO3.JUMBO): From over SAT VORTAC on SAT R-359 to JUMBO.

SC-3, 05 SEP 2024 to 03 OCT 2024

SC-3, 05 SEP 2024 to 03 OCT 2024