

BOWIE SEVEN DEPARTURE

**TOP ALTITUDE:
5000**

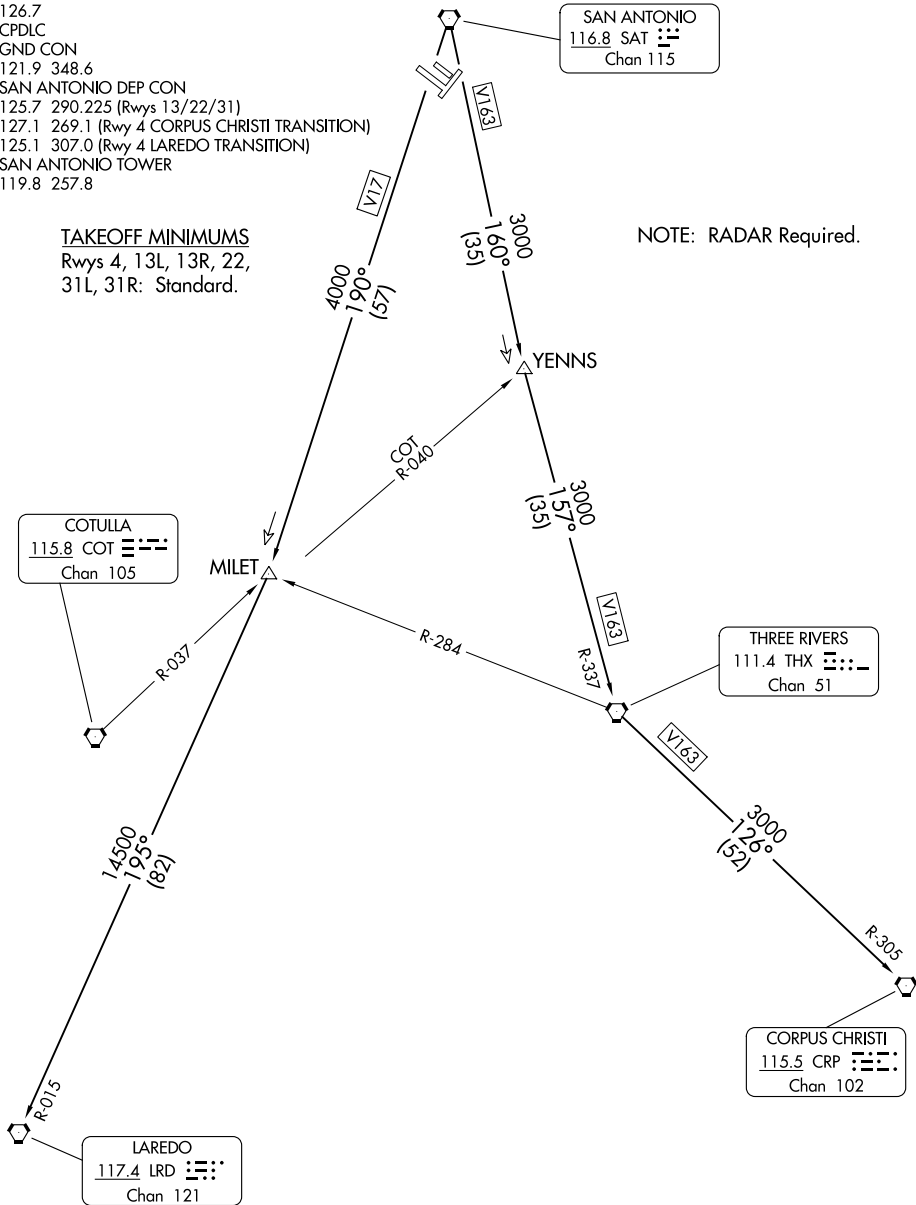
D-ATIS
118.9
CLNC DEL
126.7
CPDLC
GND CON
121.9 348.6

SAN ANTONIO DEP CON
125.7 290.225 (Rwys 13/22/31)
127.1 269.1 (Rwy 4 CORPUS CHRISTI TRANSITION)
125.1 307.0 (Rwy 4 LAREDO TRANSITION)
SAN ANTONIO TOWER
119.8 257.8

TAKEOFF MINIMUMS

Rwys 4, 13L, 13R, 22,
31L, 31R: Standard.

NOTE: RADAR Required.



SC-3, 05 SEP 2024 to 03 OCT 2024

SC-3, 05 SEP 2024 to 03 OCT 2024

NOTE: Chart not to scale.

(CONTINUED ON FOLLOWING PAGE)

BOWIE SEVEN DEPARTURE

BOWIE SEVEN DEPARTURE



DEPARTURE ROUTE DESCRIPTION

TAKEOFF RWYS 4, 13L 13R, 22, 31L, 31R: Climb on assigned heading for RADAR vectors to SAT VORTAC. Maintain 5000, thence. . .

. . . on transition/route. Expect filed altitude 10 minutes after departure.

CORPUS CHRISTI TRANSITION (BOWIE7.CRP): From over SAT VORTAC on SAT R-160 to YENNS INT/SAT 35 DME, then on THX R-337 to THX VORTAC, then on THX R-126 and CRP R-305 to CRP VORTAC.

LAREDO TRANSITION (BOWIE7.LRD): From over SAT VORTAC on SAT R-190 to MILET INT/SAT 57 DME, then on LRD R-015 to LRD VORTAC.

SC-3, 05 SEP 2024 to 03 OCT 2024

SC-3, 05 SEP 2024 to 03 OCT 2024