

LOC/DME I-ANT 110.9 Chan 46	APP CRS 128°	Rwy 13R Idg 8502 TDZE 809 Apt Elev 809
---	------------------------	---

ILS RWY 13R (CAT II)

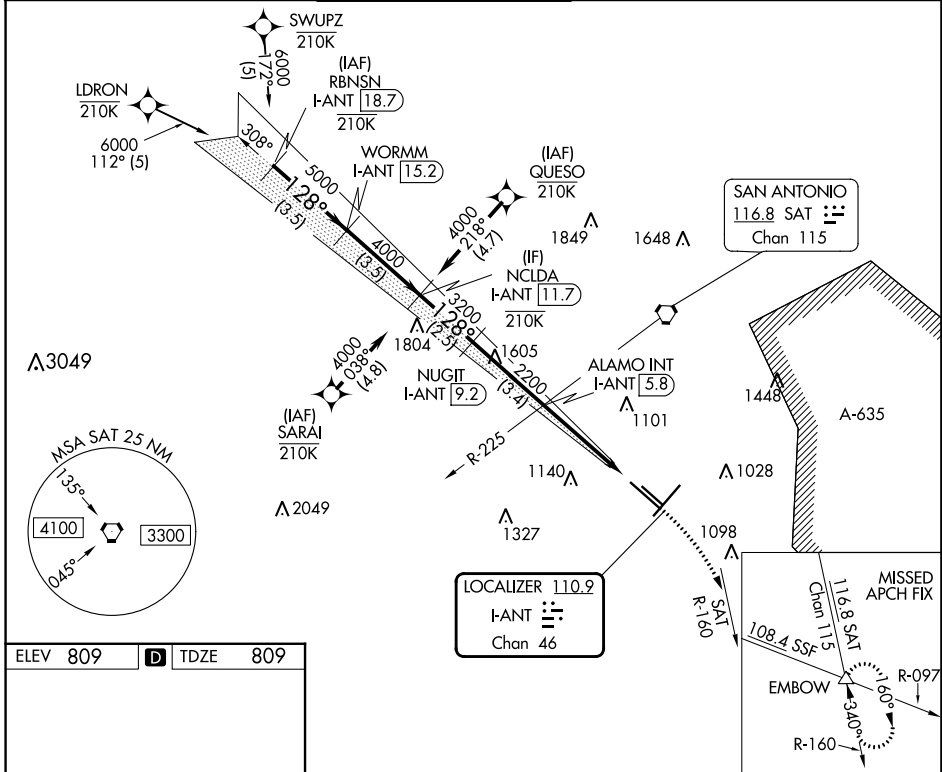
SAN ANTONIO INTL (SAT)

RNP APCH-GPS. From LDRON, SWUPZ, SARAI, QUESO.
 RNAV 1-GPS or RADAR required for procedure entry. DME required.

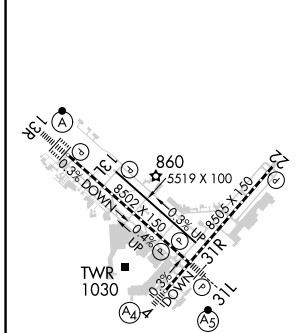
ALSF-2

MISSED APPROACH: Climb to 3100 on heading 128° and SAT VORTAC R-160 to EMBOW INT and hold.

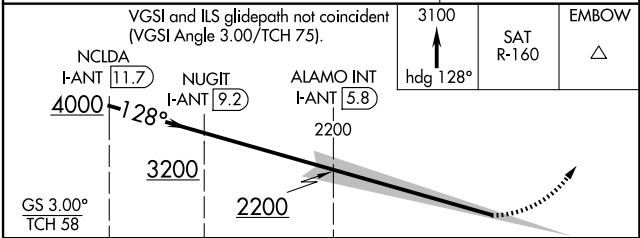
D-ATIS 118.9	SAN ANTONIO APP CON 125.1 307.0	SAN ANTONIO TOWER 119.8 257.8	GND CON 121.9 348.6	CLNC DEL 126.7	CPDLC
------------------------	---	---	-------------------------------	--------------------------	-------



ELEV 809	D	TDZE 809
-----------------	----------	-----------------



TDZ/CL Rwy 13R
 REIL Rws 13L, 22 and 31R
 HIRL Rws 4-22 and 13R-31L
 MIRL Rwy 13L-31R



CATEGORY	A	B	C	D
S-ILS 13R	RA 104/12 100 DA 909			

CATEGORY II ILS - SPECIAL AIRCREW & AIRCRAFT CERTIFICATION REQUIRED

SC-3, 05 SEP 2024 to 03 OCT 2024

SC-3, 05 SEP 2024 to 03 OCT 2024