

APP CRS	Rwy Idg	8505
217°	TDZE	770
	Apt Elev	809

RNAV (RNP) Z RWY 22

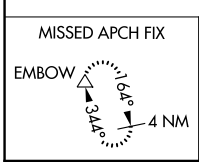
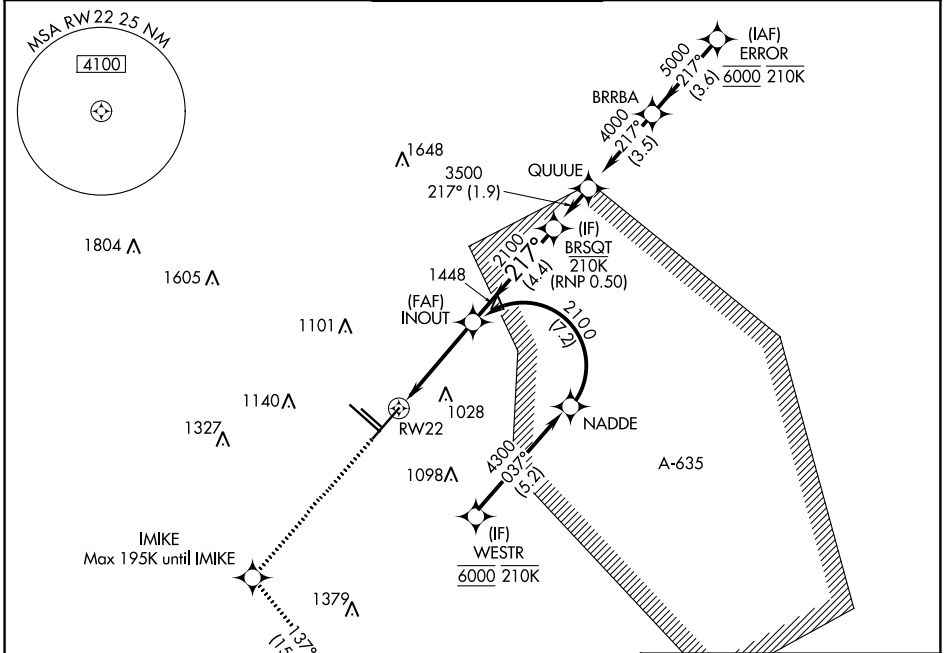
SAN ANTONIO INTL (SAT)

RNP AR APCH - GPS. Authorization required.
From BRSQT: Min RNP 0.50. From NADDE: RF.

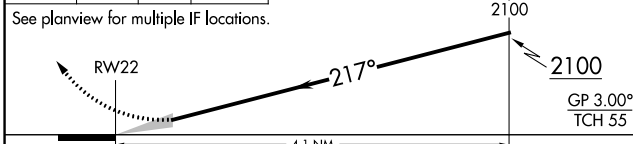
MISSED APPROACH: (Do not exceed 195K until IMIKE) Climb to 3100 direct IMIKE and on track 137° to EMBOW and hold.

▼ For uncompensated Baro-VNAV systems, procedure NA below -5°C or above 54°C.

D-ATIS	SAN ANTONIO APP CON	SAN ANTONIO TOWER	GND CON	CLNC DEL	CPDLC
118.9	125.1 307.0	119.8 257.8	121.9 348.6	126.7	

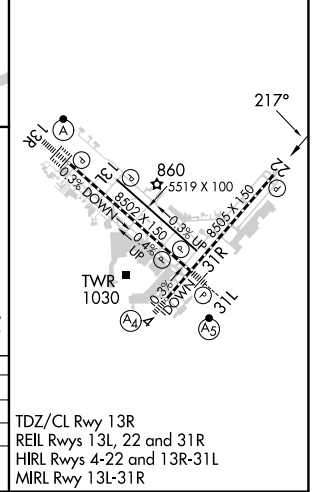


3100	IMIKE	EMBOW	VGSI and RNAV glidepath not coincident (VGSI Angle 3.00/TCH 85).
↑	✧	tr 137°	



CATEGORY	A	B	C	D
RNP 0.15 DA		1068-7/8	298 (300-7/8)	
RNP 0.30 DA		1220-13/8	450 (500-13/8)	

ELEV	809	D	TDZE	770
------	-----	---	------	-----



SC-3, 05 SEP 2024 to 03 OCT 2024

SC-3, 05 SEP 2024 to 03 OCT 2024

AUTHORIZATION REQUIRED

TDZ/CL Rwy 13R
REIL Rwys 13L, 22 and 31R
HIRL Rwys 4-22 and 13R-31L
MIRL Rwy 13L-31R