


LOC/DME I-SAN 111.55 Chan 52 (Y)	APP CRS 095°	Rwy Idg 7280 TDZE 17 Apt Elev 17
---	------------------------	---

ILS Z or LOC Z RWY 9

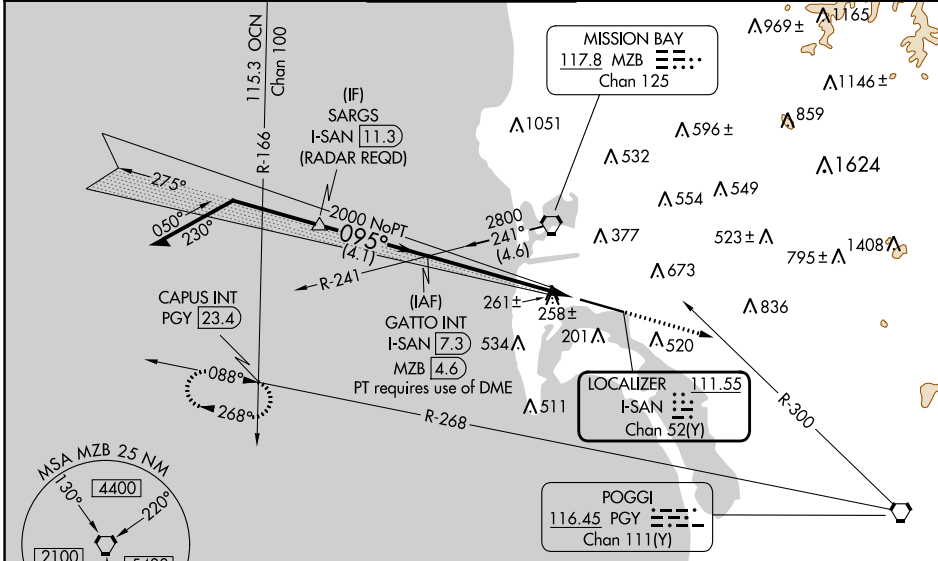
SAN DIEGO INTL (SAN)

⚠ Circling NA north of Rwy 9-27. Autopilot coupled approach NA below 530. When Circling to Rwy 27 at night, operational VGSI required, remain on or above VGSI glidepath until threshold. For inop ALS, increase S-LOC Cat A/B visibility to RVR 5500, and Cat C/D to 1 3/8 SM. LOC only: Rwy 9 helicopter visibility reduction below RVR 4000 NA.

MALSR


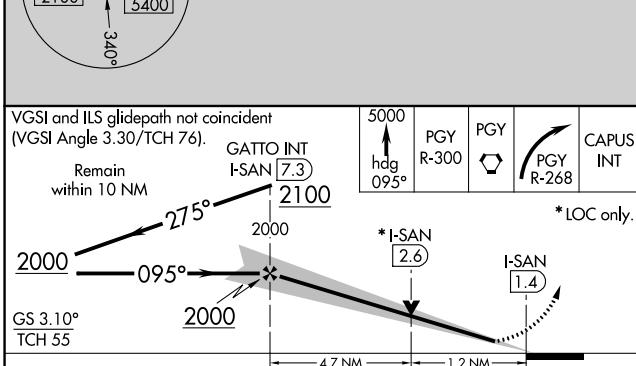
MISSED APPROACH: Climb to 5000 on heading 095° and on PGY VORTAC R-300 to PGY VORTAC, then right turn on PGY VORTAC R-268 to CAPUS INT/23.4 DME and hold.
#Missed approach requires minimum climb of 280 feet per NM to 3800; if unable to meet climb gradient, see ILS Y or LOC Y RWY 9.

D-ATIS 134.8	SOCAL APP CON 119.6 363.1 (WEST) 124.35 279.625 (EAST)	LINDBERGH TOWER 118.3 338.225	GND CON 123.9	CLNC DEL 125.9	CPDLC
------------------------	--	---	-------------------------	--------------------------	-------



SW-3, 05 SEP 2024 to 03 OCT 2024

SW-3, 05 SEP 2024 to 03 OCT 2024



ELEV 17	D TDZE 17
---------	------------------

CATEGORY	A	B	C	D
S-ILS 9#	217/18 200 (200-1/2)			
S-LOC 9	520/40	503 (600-3/4)	520/55	503 (600-1)
C CIRCLING	800-1 783 (800-1)	820-1 803 (900-1)	820-2 1/4 803 (900-2 1/4)	940-3 923 (1000-3)

