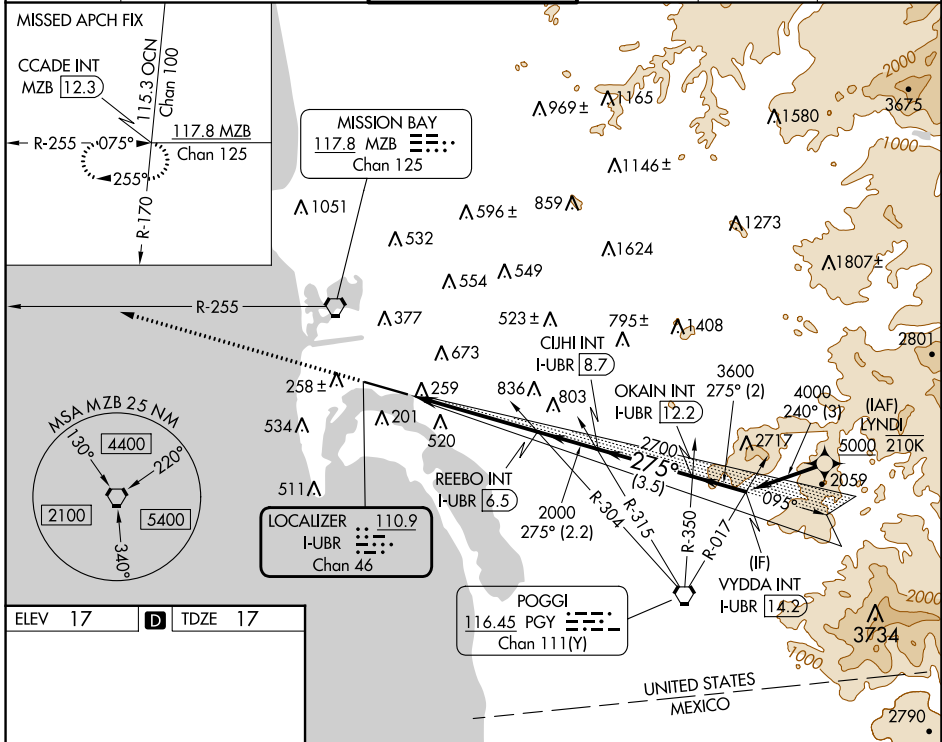


| | | |
|---|------------------------|--|
| LOC/DME I-UBR 110.9 Chan 46 | APP CRS 275° | Rwy Idg TDZE Apt Elev 7591 17 17 |
|---|------------------------|--|

LOC RWY 27

SAN DIEGO INTL (SAN)

| | | | | | |
|--|--|---|---|--------------------------|-------|
| From LYNDI: RNAV 1-DME/DME/IRU or GPS required. | | MAIS ④ | MISSED APPROACH: Climb to 2500 on heading 275° and on MZB VORTAC R-255 to CCADE INT/RMZB 12.3 DME and hold. | | |
| RNAV 1-DME/DME/IRU or GPS required for procedure entry. | | | | | |
| <p>▼ Rwy 27 helicopter visibility reduction below 1 SM NA. Circling NA north of Rwy 9-27. Inop table does not apply to Cats A and B. For inop ALS, increase S-27 Cats C and D visibility to 1/8 SM.</p> | | | | | |
| D-ATIS 134.8 | SOCAL APP CON 119.6 363.1 (WEST) 124.35 279.625 (EAST) | LINDBERGH TOWER 118.3 338.225 | GND CON 123.9 | CLNC DEL 125.9 | CPDLC |



| | | | | | | | | | | | | | | |
|--|----------|---------|-------|------|------|-----|-----|-----|---------|------|------|------|------|------|
| ELEV 17 | D | TDZE 17 | | | | | | | | | | | | |
| <p>TDZ/CL Rws 9 and 27 HIRL Rwy 9-27</p> <p>FAF to MAP 5.2 NM</p> <table border="1"> <tr> <td>Knots</td> <td>60</td> <td>90</td> <td>120</td> <td>150</td> <td>180</td> </tr> <tr> <td>Min:Sec</td> <td>5:12</td> <td>3:28</td> <td>2:36</td> <td>2:05</td> <td>1:44</td> </tr> </table> | | | Knots | 60 | 90 | 120 | 150 | 180 | Min:Sec | 5:12 | 3:28 | 2:36 | 2:05 | 1:44 |
| Knots | 60 | 90 | 120 | 150 | 180 | | | | | | | | | |
| Min:Sec | 5:12 | 3:28 | 2:36 | 2:05 | 1:44 | | | | | | | | | |

| | | | | |
|-------------------|---------------------|--------------------|----------------------|--------------|
| 2500 | MZB R-255 | CCADE INT | VYDDA INT I-UBR 14.2 | |
| hdg 275° | | | | |
| | REEBO INT I-UBR 6.5 | CJHI INT I-UBR 8.7 | OKAIN INT I-UBR 12.2 | |
| | | | 4000 | |
| | I-UBR 1.3 | 2700 | 3600 | |
| | ≤ 3.50° TCH 65 | | | |
| | 5.2 NM | 2.2 NM | 3.5 NM | |
| | | 2 NM | | |
| CATEGORY | A | B | C | D |
| S-27 | 680-1 | 663 (700-1) | 680-1¾ | 663 (700-1¾) |
| C CIRCLING | 820-1 | 803 (900-1) | 840-2½ | 940-3 |
| | | | 823 (900-2½) | 923 (1000-3) |

SW-3, 05 SEP 2024 to 03 OCT 2024

SW-3, 05 SEP 2024 to 03 OCT 2024