

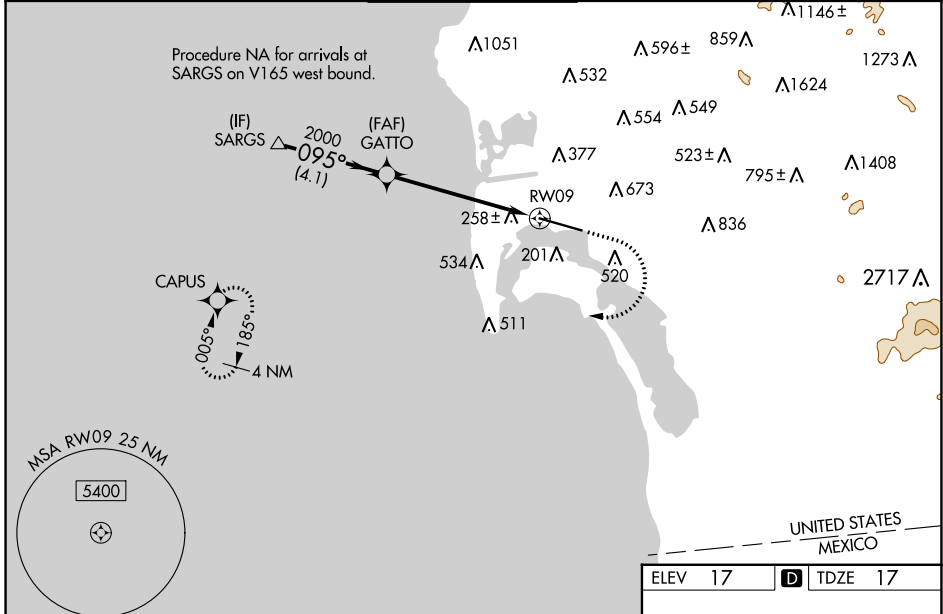
WAAS CH 49237 W09A	APP CRS 095°	Rwy Idg 7280 TDZE 17 Apt Elev 17
--	------------------------	---

RNAV (GPS) RWY 9

SAN DIEGO INTL (SAN)

RNP APCH.	<p>⚠ Circling NA north of Rwy 9-27. For uncompensated Baro-VNAV systems, LNAV/VNAV NA below 6°C or above 47°C. When Circling to Rwy 27 at night, operational VGSI required, remain on or above VGSI glidepath until threshold. Rwy 9 helicopter visibility reduction below RVR 4000 NA. Inop table does not apply to LPV all Cats. For inop ALS, increase LNAV Cats A/B visibility to RVR 5500.</p>	MALSR 	MISSED APPROACH: Climb to 2000 then climbing right turn to 3000 direct CAPUS and hold.

D-ATIS 134.8	SOCAL APP CON 119.6 363.1 (WEST) 124.35 279.625 (EAST)	LINDBERGH TOWER 118.3 338.225	GND CON 123.9	CLNC DEL 125.9	CPDLC
------------------------	--	---	-------------------------	--------------------------	-------



VGSI and RNAV glidepath not coincident (VGSI Angle 3.30/TCH 76). SARGS \rightarrow GATTO \rightarrow RWY09 2100 \rightarrow 095° \rightarrow 2000 \rightarrow 2000 \rightarrow RWY09 GP 3.10° TCH 55 4.1 NM, 4.3 NM, 1.6 NM					2000 3000 CAPUS
*1.6 NM to RWY09 *LNAV only.					
CATEGORY	A	B	C	D	
LPV DA		262/40	245 (300-¾)		
LNAV/VNAV DA		621-1½	604 (700-1½)		
LNAV MDA	600/40	583 (600-¾)	600-1¼	583 (600-1¼)	
C CIRCLING	800-1 783 (800-1)	820-1 803 (900-1)	820-2¼ 803 (900-2¼)	940-3 923 (1000-3)	
TDZ/CL Rwy 9 and 27 HIRL Rwy 9-27					

SW-3, 05 SEP 2024 to 03 OCT 2024

SW-3, 05 SEP 2024 to 03 OCT 2024