

DYAMD FIVE ARRIVAL (RNAV) Transition Routes  
(DYAMD.DYAMD5) 03JAN19

SAN FRANCISCO, CALIFORNIA  
SAN FRANCISCO INTL (SFO)

OAKLAND CENTER 134.37 281.5  
NORCAL APP CON 128.325 254.3  
D-ATIS 113.7 115.8 118.85  
SAN FRANCISCO TOWER 120.5 269.1  
GND CON 121.8

(DYAMD.DYAMD5) 19003  
DYAMD FIVE ARRIVAL (RNAV) Transition Routes  
AL-375 (FAI)

SAN FRANCISCO INTL (SFO)  
SAN FRANCISCO, CALIFORNIA

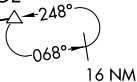


See following page  
for Arrival Routes

DYAMD  
FL270 290K

FL220  
248°  
(79)

INYOE



FL220  
262°  
(138)

RUSME

- NOTE: RNAV 1.
- NOTE: DME/DME/IRU or GPS required.
- NOTE: Expect to receive "descend via" clearance from Oakland Center. Northern California TRACON will assign landing runway.
- NOTE: RADAR required for non-GPS equipped aircraft.

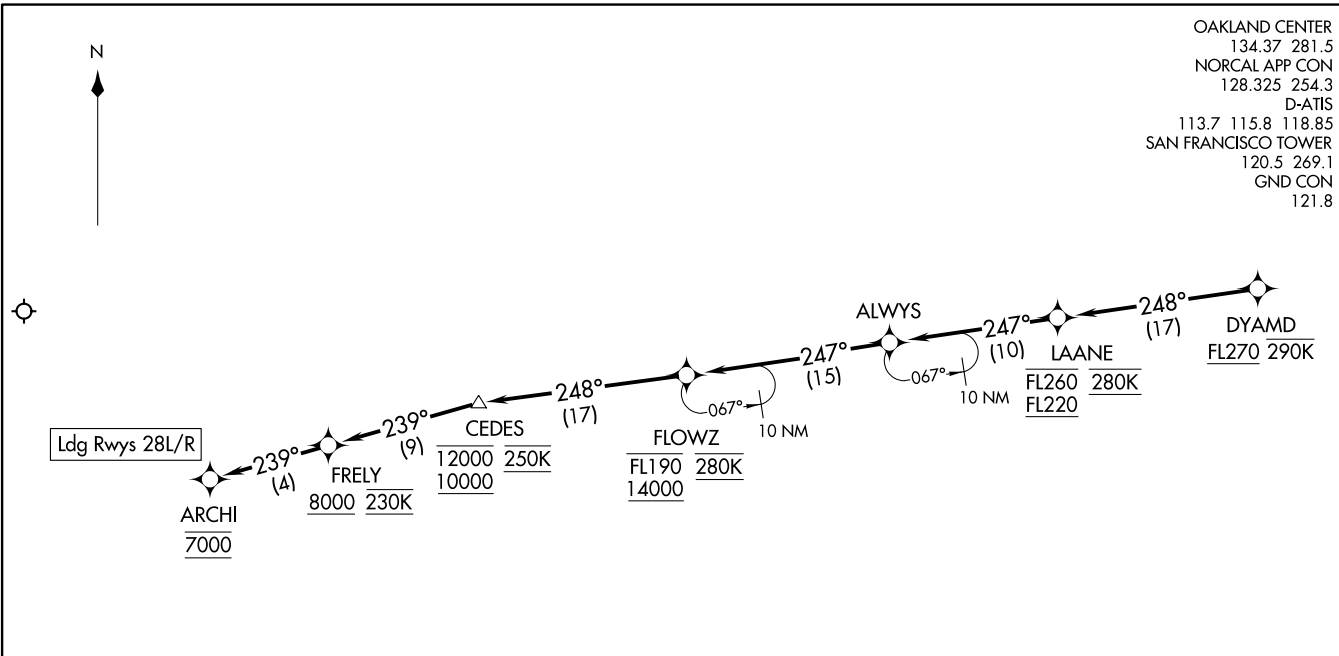
INYOE TRANSITION (INYOE.DYAMD5)  
RUSME TRANSITION (RUSME.DYAMD5)

NOTE: Chart not to scale.

(CONTINUED ON FOLLOWING PAGE)

DYAMD FIVE ARRIVAL (RNAV) Arrival Routes  
 (DYAMD: DYAMD5) 03JAN19

SAN FRANCISCO, CALIFORNIA  
 SAN FRANCISCO INTL (SFO)



OAKLAND CENTER  
 134.37 281.5  
 NORCAL APP CON  
 128.325 254.3  
 D-ATIS  
 113.7 115.8 118.85  
 SAN FRANCISCO TOWER  
 120.5 269.1  
 GND CON  
 121.8

(DYAMD: DYAMD5) 19003  
 DYAMD FIVE ARRIVAL (RNAV) Arrival Routes  
 AL-375 (FAA)

SAN FRANCISCO INTL (SFO)  
 SAN FRANCISCO, CALIFORNIA

**ARRIVAL ROUTE DESCRIPTION**

From DYAMD on track 248° to cross LAANE between FL220 and FL260 and at 280K, then on track 247° to ALWAYS.

**LANDING RUNWAYS 28L/R:** From ALWAYS on track 247° to cross FLOWZ between 14000 and FL190 and at 280K, then on track 248° to cross CEDES between 10000 and 12000 and at 250K, then on track 239° to cross FRELY at or above 8000 and at 230K, then on track 239° to cross ARCHI at 7000. Expect assigned instrument approach procedure.

NOTE: RNAV 1.  
 NOTE: DME/DME/IRU or GPS required.  
 NOTE: Expect to receive "descend via" clearance from Oakland Center. Northern California TRACON will assign landing runway.  
 NOTE: RADAR required for non-GPS equipped aircraft.

NOTE: Chart not to scale.