

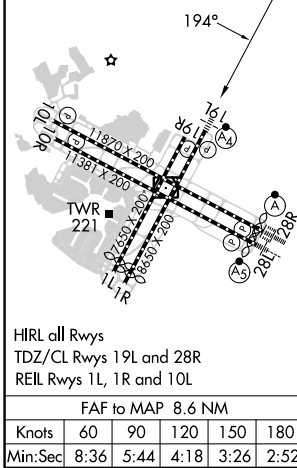
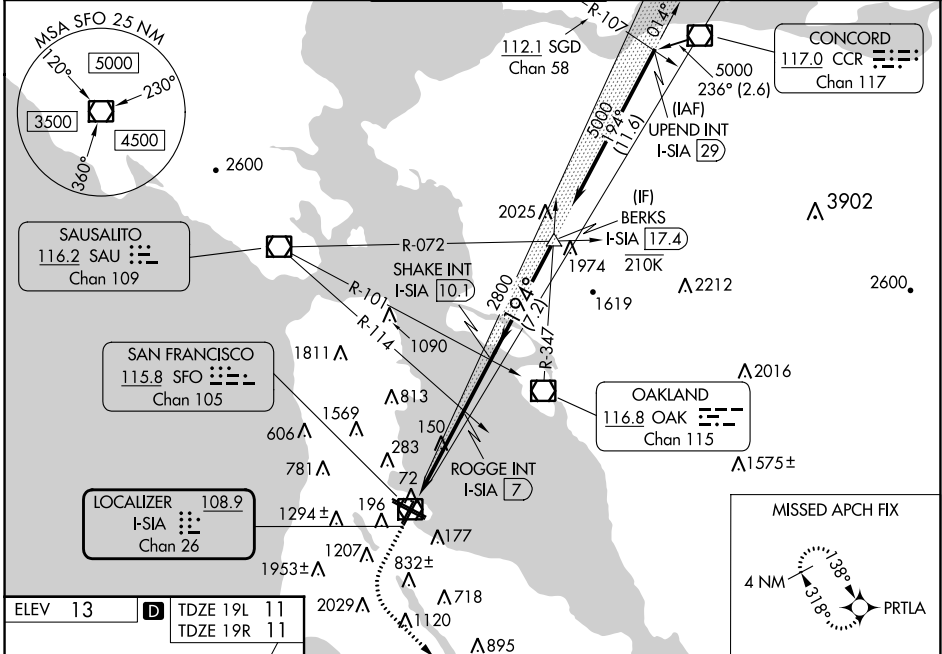
LOC/DME I-SIA 108.9 Chan 26	APP CRS 194°	Rwy Idg TDZE Apt Elev	19L 8650 11 13	19R 7650 11 13
---	------------------------	-----------------------------	--	--

ILS or LOC RWY 19L

SAN FRANCISCO INTL (SFO)

RNP APCH - GPS.	MALSf Rwy 19L	MISSED APPROACH: Climb to 1100 then climbing left turn to 4000 direct to PRTLA and hold. *Missed approach requires minimum climb of 357 feet per NM to 2000.
-----------------	---------------	---

D-ATIS 113.7 115.8 118.85	NORCAL APP CON 134.5 338.2	SAN FRANCISCO TOWER 120.5 269.1	GND CON 121.8	CLNC DEL 118.2	CPDLC
-------------------------------------	--------------------------------------	---	-------------------------	--------------------------	-------



ELEV 13	TDZE 19L 11	TDZE 19R 11
1100	4000	PRTLA
VGSI and ILS glidepath not coincident (VGSI Angle 3.00/TCH 71).		
I-SIA 1.5	I-SIA 4	I-SIA 7
2.5 NM	3 NM	3.1 NM
7.2 NM	5000	GS 3.00° TCH 55
BERKS I-SIA 17.4	SHAKE INT I-SIA 10.1	ROGGE INT I-SIA 7
1100	4000	PRTLA
1800	2800	2800
1800-1 1/4	1800-1 1/2	1800-3
1789 (1800-1 1/4)	1789 (1800-1 1/2)	1789 (1800-3)
ROGGE FIX MINIMUMS (DUAL VOR RECEIVERS OR DME REQUIRED)		
880/40	880/55	880-2 1/2
869 (900-3/4)	869 (900-1)	869 (900-2 1/2)
880-2	869 (900-2)	880-3
869 (900-2)		869 (900-3)

SW-2, 05 SEP 2024 to 03 OCT 2024

SW-2, 05 SEP 2024 to 03 OCT 2024