

(SEGUL1.SEGUL) 24193

SEGUL ONE DEPARTURE (RNAV)

SAN FRANCISCO INTL (SFO)

SAN FRANCISCO, CALIFORNIA

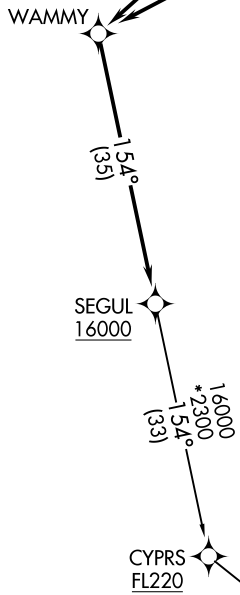
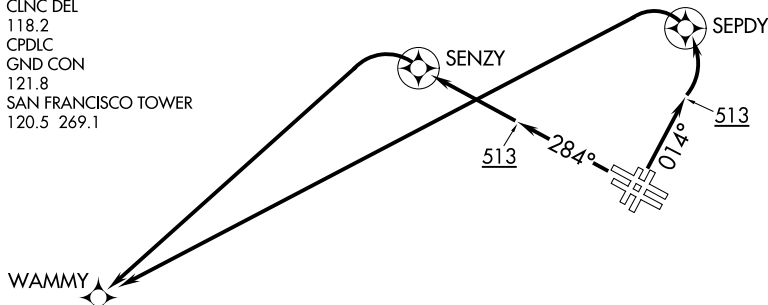
AL-375 (FAA)

RNAV 1 - DME/DME/IRU or GPS.

RADAR required for non-GPS equipped aircraft.

NORCAL DEP CON
 135.1 307.2
 D-ATIS
 113.7 115.8 118.85
 CLNC DEL
 118.2
 CPDLC
 GND CON
 121.8
 SAN FRANCISCO TOWER
 120.5 269.1

**TOP ALTITUDE:
 ASSIGNED BY ATC**



DEPARTURE ROUTE DESCRIPTION

TAKEOFF RUNWAYS 1L/R: Climb on heading 014° to 513, then left turn direct SEPDY, then left turn direct WAMMY, then on track 154° to cross SEGUL at or above 16000, thence

TAKEOFF RUNWAYS 28L/R: Climb on heading 284° to 513, then direct SENZY, then left turn direct WAMMY, then on track 154° to cross SEGUL at or above 16000, thence

. . . . on YYUNG Transition. Maintain ATC assigned altitude, expect filed altitude 10 minutes after departure.

YYUNG TRANSITION (SEGUL1.YYUNG)

TAKEOFF MINIMUMS

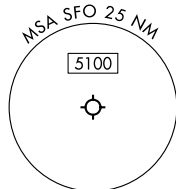
Rwy 10L/R, 19L/R: NA - ATC

Rwys 1L/R: Standard with minimum climb of 500'/NM to 513 then 353'/NM to 2100.

Rwy 28L: Standard with minimum climb of 353'/NM to 1200.

Rwy 28R: Standard with minimum climb of 361'/NM to 1100.

FL220
 *1700
 115°
 (86)



YYUNG

NOTE: Turbojet aircraft only.

NOTE: Chart not to scale.

SEGUL ONE DEPARTURE (RNAV)

(SEGUL1.SEGUL) 11 JUL 24

SAN FRANCISCO, CALIFORNIA

SAN FRANCISCO INTL (SFO)

SW-2, 05 SEP 2024 to 03 OCT 2024

SW-2, 05 SEP 2024 to 03 OCT 2024