

(WESLA5.WESLA) 21224

# WESLA FIVE DEPARTURE (RNAV)

SAN FRANCISCO INTL (SFO)  
SAN FRANCISCO, CALIFORNIA

AL-375 (FAA)

D-ATIS  
113.7 115.8 118.85  
CLNC DEL  
118.2  
CPDLC  
GND CON  
121.8  
SAN FRANCISCO TOWER  
120.5 269.1  
NORCAL DEP CON  
135.1 307.2

**TOP ALTITUDE:  
AS ASSIGNED  
BY ATC**



## DEPARTURE ROUTE DESCRIPTION

TAKEOFF RUNWAYS 28L/R: Climb on heading 284° to 520, then climb direct to cross WESLA at or above 2000 at or below 230K, then climbing left turn direct PORTE, thence . . . .

. . . . on (transition). Maintain 3000, expect filed altitude 10 minutes after departure.

KAYEX TRANSITION (WESLA5.KAYEX)

KTINA TRANSITION (WESLA5.KTINA)

NTELL TRANSITION (WESLA5.NTELL)

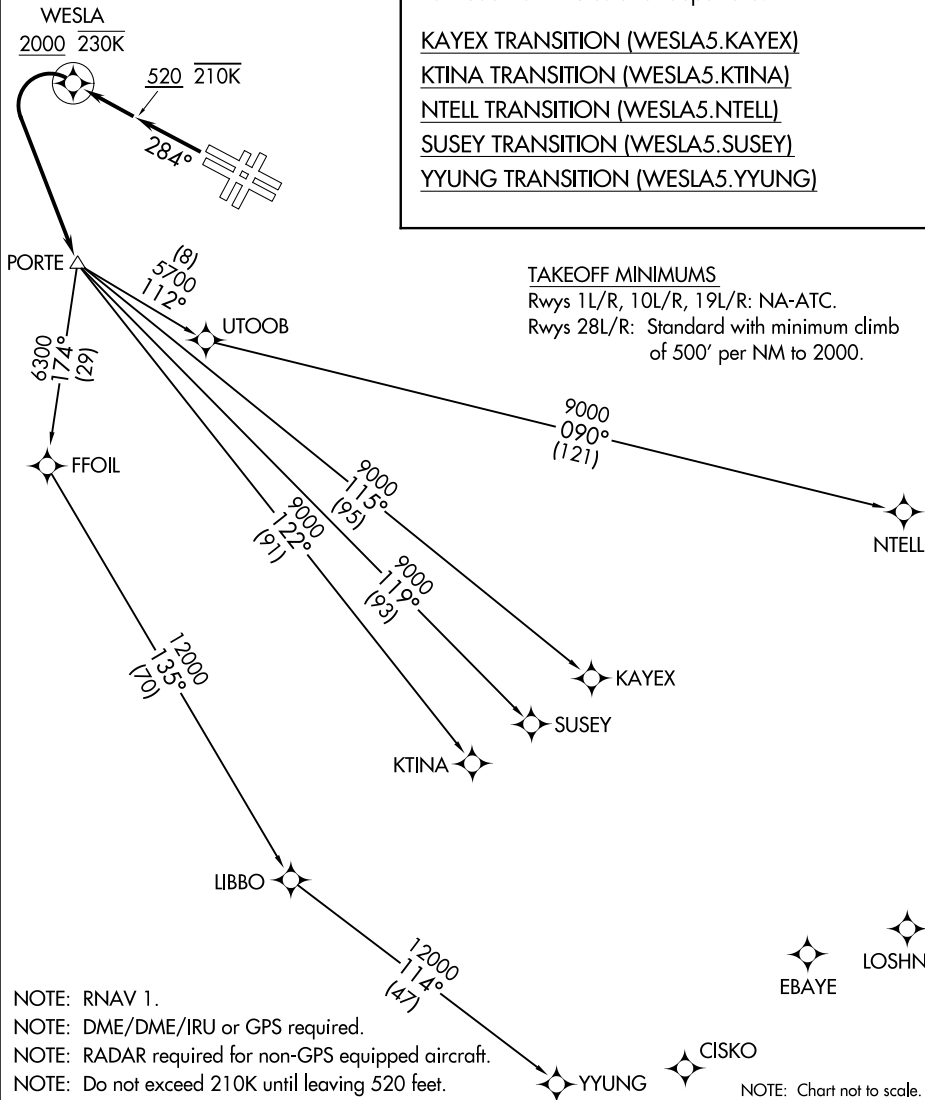
SUSEY TRANSITION (WESLA5.SUSEY)

YYUNG TRANSITION (WESLA5.YYUNG)

### TAKEOFF MINIMUMS

Rwys 1L/R, 10L/R, 19L/R: NA-ATC.

Rwys 28L/R: Standard with minimum climb of 500' per NM to 2000.



- NOTE: RNAV 1.
- NOTE: DME/DME/IRU or GPS required.
- NOTE: RADAR required for non-GPS equipped aircraft.
- NOTE: Do not exceed 210K until leaving 520 feet.

NOTE: Chart not to scale.

# WESLA FIVE DEPARTURE (RNAV)

(WESLA5.WESLA) 12AUG21

SAN FRANCISCO, CALIFORNIA  
SAN FRANCISCO INTL (SFO)

SW-2, 05 SEP 2024 to 03 OCT 2024

SW-2, 05 SEP 2024 to 03 OCT 2024