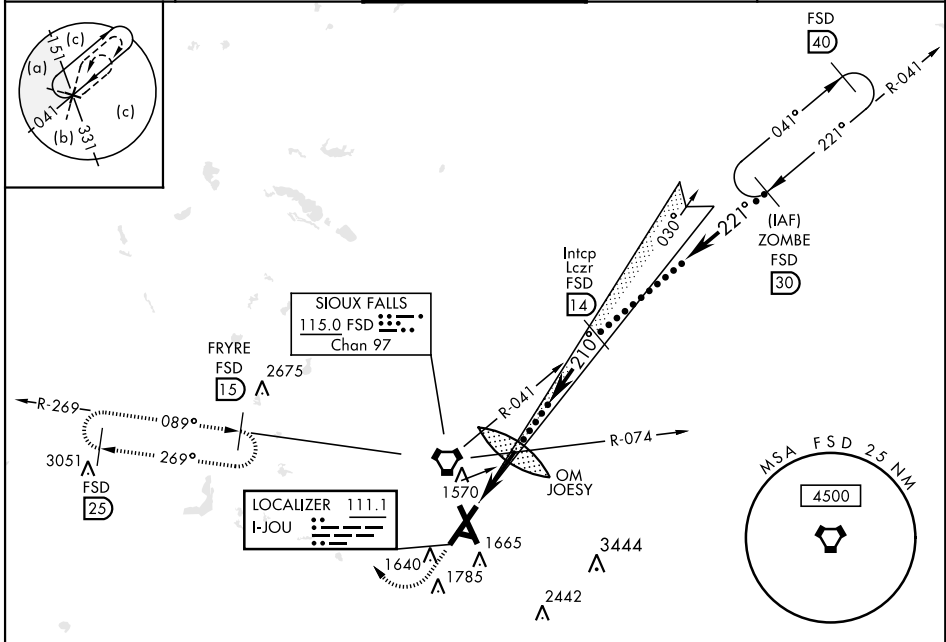


SIOUX FALLS, SOUTH DAKOTA

HI-ILS or LOC RWY 21

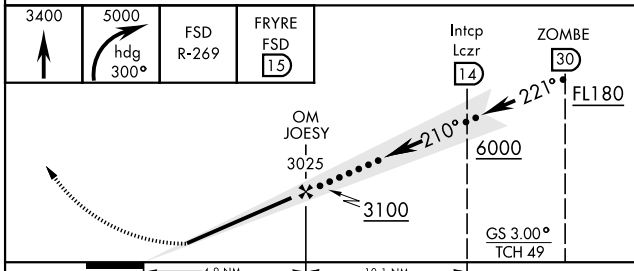
LOC I-JOU 111.1	APCH CRS 210°	Rwy ldg 8999 TDZE 1430 Arprt Elev 1430	AL-396 [USAF]	JOE FOSS FLD (KFSD)
DME required. RADAR required for procedure entry.			MALSR	MISSED APPROACH: Climb to 3400 then climbing right turn to 5000 on heading 300° and FSD R-269 to FRYRE 15 DME and hold.

ATIS 126.6	SIOUX FALLS APP CON 125.8 306.2	SIOUX FALLS TOWER ★ 118.3(CTAF) 257.8	GND CON 121.9 348.6	ASR
----------------------	---	---	-------------------------------	-----

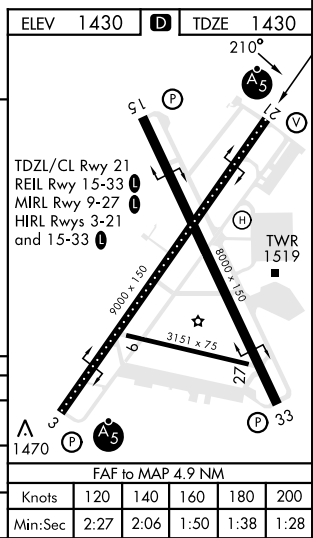


ELEV 1430	TDZE 1430
-----------	-----------

EMERG SAFE ALT 100 NM 4600



CATEGORY	C	D	E
S-ILS 21*	1630/18	200	(200-½)
S-LOC 21**	1920/50	490 (500-1)	1920/60 490 (500-1½)
CIRCLING	2060-1¾ 630 (700-1¾)	2200-2½ 770 (800-2½)	2300-3 870 (900-3)



SIOUX FALLS, SOUTH DAKOTA
Amdt 6C 04NOV21

43° 35' N - 96° 45' W

JOE FOSS FLD (KFSD)

HI-ILS or LOC RWY 21

NC-1, 05 SEP 2024 to 03 OCT 2024

NC-1, 05 SEP 2024 to 03 OCT 2024